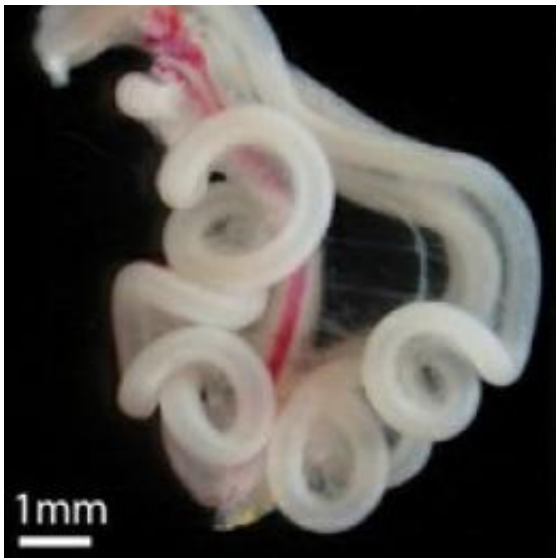


Mathematicians, biologists explain why vertebrate intestines are so predictably loopy

10 August 2011



This is an embryonic chick gut at stage E16. Within a species, individuals of a given age will show the same number and size of gut loops. Credit: Photo courtesy of L. Mahadevan.

Between conception and birth, the human gut grows more than two meters long, looping and coiling within the tiny abdomen. Within a given species, the developing vertebrate gut always loops into the same formation—however, until now, it has not been clear why.

Using a combination of experimental observations, biological and biophysical manipulations, theory, and computation, researchers at Harvard have shown that a "simple" balance of forces determines the form of the [gut](#).

The finding may shed light on how the gut has been able to evolve to accommodate changes in diet.

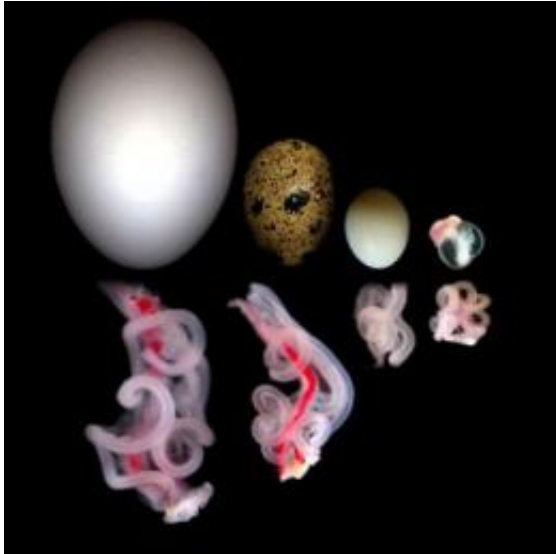
The interdisciplinary research, published in the

August 4th issue of *Nature*, demonstrates that differences in growth rates between the gut tube and the neighboring mesenteric tissue force the tube to coil, regardless of the space constraints.

"One might think that the gut tube coils because it is restricted by the size of the abdominal cavity. That's actually not the case," says co-author Thierry Savin, a postdoctoral research associate at Harvard's School of Engineering and Applied Sciences (SEAS). "The gut coils because when the mesentery and the gut tube grow at different rates while remaining attached, coiling is the only possible result."

"A simple mathematical scaling theory combined with computations showed that these patterns are quantitatively predictable using experimentally derived measurements with no adjustable parameters. This allows for a study of the pattern as a function of developmental time—and even across species," explains co-author L. Mahadevan, Professor of Applied Mathematics at SEAS, Professor of Organismal and Evolutionary Biology and Physics, and member of the Wyss Institute for Biologically Inspired Engineering and the Kavli Institute for Bionano Science and Technology at Harvard.

In a developing vertebrate embryo, the gut tube is connected along its length to an elastic sheet of tissue called the mesentery. Previous work by the group of co-author Cliff Tabin, Professor of Genetics at Harvard Medical School, showed that the gut has a particular handedness that is determined by the asymmetric growth of the mesentery on one side.



From left to right, the digestive tracts of chick, quail, zebra finch and mouse embryos are shown with the mesenteric tissue still attached. The top row shows the relative size of the eggs (or embryo, in the case of the mammal). Credit: Composite photo courtesy of N. Kurpios, Harvard University.

An initial hypothesis for the coiling of the gut proposed that similar inhomogeneous growth patterns within the mesentery or differential cell proliferation in the gut may have led to coiling.

However, an informal conversation at the origin of the collaboration with Tabin and co-author Natasza Kurpios inspired Mahadevan to propose a simpler hypothesis: that the gut grows uniformly faster relative to the mesentery.

Experiments showed that there are no non-uniformities in the cell proliferation patterns in the gut or the mesentery individually, and confirmed that the gut tube does, indeed, grow uniformly faster than the mesentery, to which it is attached.

As a result of this differential growth, the mesentery stretches, while the gut is compressed. When the elastic forces build up to a certain point, the gut tube buckles and coils.

The Harvard team also demonstrated that the web-like mesentery is integral to the shape of the developing gut. Kurpios and co-author Amy Shyer

showed, through surgical manipulations, that removing the mesentery from an early-stage embryo in ovo prevented loops from forming, and removing it from a late-stage embryo caused the looping structure to relax.

These manipulations confirmed that while the gut tube and the mesentery lengthen at constant speeds, the difference in growth rate between the two attached tissues creates the opposing forces necessary for coiling.

To express this quantitatively, the researchers built a physical model of the process by sewing a silicone tube to the edge of a stretched sheet of latex-which simulated the gut - mesentery composite-and built mathematical and computational models of the coiling process.



Top: The researchers produced a graphical simulation of gut looping in a chick embryo (stage E16), using a model based on geometry, the mechanical properties of the tissues, and the relative growth rate of the gut tube and the mesentery. Bottom: An actual chick gut (E16). Credit: Image courtesy of T. Savin and A. Shyer.

"As experimentalists, we wanted to test these ideas by altering the properties of the tissues in developing embryos and seeing if the gut coiling changes in predicted ways," says Tabin. "While we do not know how to change the relative growth rates of the gut tissues or alter their elastic properties in chickens, fortunately, nature has done the experiment for us. Animals that have evolved to take advantage of very different diets have strikingly different gut structures."

The researchers examined chicks, quails, zebra finches, and mice, and found in each case that the shape of the gut at any stage can be predicted quantitatively, based on the geometry, the relative

growth rates, and the mechanical properties of the tissues.

The finding suggests that changing just the relative growth rate can alter the packing of a long tube in a reproducible way, suggesting a mechanism by which the gut may have been able to evolve to accommodate changes in diet.

Provided by Harvard University

APA citation: Mathematicians, biologists explain why vertebrate intestines are so predictably loopy (2011, August 10) retrieved 27 September 2020 from <https://phys.org/news/2011-08-mathematicians-biologists-vertebrate-intestines-loopy.html>

This document is subject to copyright. Apart from any fair dealing for the purpose of private study or research, no part may be reproduced without the written permission. The content is provided for information purposes only.