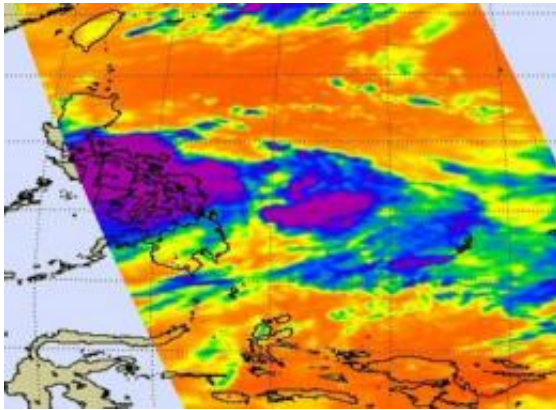


Tropical Depression 10W bringing rain to the Philippines

25 July 2011



This infrared image of Tropical Depression 10W was taken from the AIRS instrument on NASA's Aqua satellite on July 25 at 0441 UTC (12:41 a.m. EDT) and it revealed a large area of very cold cloud top temperatures (purple) from strong thunderstorms over the central Philippines. Credit: NASA JPL, Ed Olsen

The tenth tropical depression formed in the western North Pacific Ocean this past weekend, and brought rains to the central Philippines as seen on infrared imagery from a NASA satellite.

When NASA's Aqua satellite passed over Tropical Depression 10W on July 25 at 0441 UTC (12:41 a.m. EDT), the infrared image captured by the Atmospheric Infrared Sounder (AIRS) instrument revealed a large area of very cold cloud top temperatures (-63F/-52C) from strong thunderstorms over the central Philippines. A second area of strong thunderstorms on the eastern side of circulation was over the Philippine Sea.

On July 25 at 0600 UTC (2 a.m. EDT) Tropical Depression 10W's [maximum sustained winds](#) were near 30 knots (34 mph/55 kmh). It was about 335 nautical miles (385 miles/ 620 km) east of Manila, Philippines near 13.8 North and 126.4 East. Tropical Depression 10W (TD10W) is moving to

the northwest at 9 knots (10 mph/17 kmh).

[Satellite imagery](#) has shown that the bands of thunderstorms feeding into the center of TD10W's circulation. TD10W continues to become more organized. The system is in an area of low to moderate wind shear which is enabling it to become better organized.

At 11 a.m. EDT on July 25, a weather station in Daet, Philippines was reporting thunderstorms and rain, with winds from the west at 11 mph. Daet is the capital municipality in the Camarines Norte province. The local forecast calls for TD10W to affect the city through the day on July 26.

The Joint [Typhoon Warning Center](#) forecasters expect TD10W to slowly intensify over the next two days and make landfall northeast of Hong Kong later this week.

Provided by NASA's Goddard Space Flight Center

APA citation: Tropical Depression 10W bringing rain to the Philippines (2011, July 25) retrieved 27 October 2021 from <https://phys.org/news/2011-07-tropical-depression-10w-philippines.html>

This document is subject to copyright. Apart from any fair dealing for the purpose of private study or research, no part may be reproduced without the written permission. The content is provided for information purposes only.