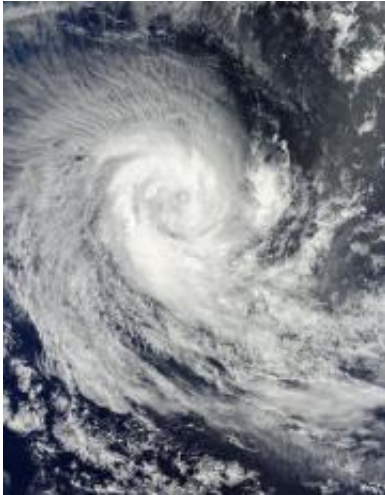


Tropical Storm Imani making a question mark in the Southern Indian Ocean

24 March 2010



winds extended out up to 55 miles from the center, making the storm about 110 miles in diameter. It was located about 745 miles west-southwest of Cocos Island, near 15.7 south and 86.3 East. It was moving southwest near 13 mph (11 knots).

Imani has strengthened a little and poses no threat to land. It is forecast to intensify more for another day before moving into an area of increasing vertical wind shear, which will weaken it.

Provided by NASA's Goddard Space Flight Center

NASA's Terra satellite captured an image of Tropical Storm Imani on March 24 at 4:25 UTC, and it showed a storm with good symmetry, indicating that it is well-organized. The image even hinted of an eye forming in the storm's center. Credit: NASA MODIS Rapid Response Team

Over the last week, the path that Tropical Storm Imani, formerly tropical cyclone 21S, is making in the Southern Indian Ocean resembles a question mark. However, there is no question in the minds of forecasters that Imani is headed south to finish out the "question mark" shape.

The [Moderate Resolution Imaging Spectroradiometer](#) or MODIS instrument on NASA's [Terra satellite](#) captured Tropical Storm Imani at 0425 UTC (12:25 a.m. EDT) today, when it was near the "middle of the question mark" track that it is taking. It showed a storm with good symmetry, indicating that it is well-organized. The image even hinted of an eye forming in the storm's center.

At 0900 UTC (5 a.m. EDT) today, March 24, [Tropical Storm](#) Imani had [maximum sustained winds](#) near 63 mph (55 knots). Tropical storm-force

APA citation: Tropical Storm Imani making a question mark in the Southern Indian Ocean (2010, March 24) retrieved 9 December 2021 from <https://phys.org/news/2010-03-tropical-storm-imani-southern-indian.html>

This document is subject to copyright. Apart from any fair dealing for the purpose of private study or research, no part may be reproduced without the written permission. The content is provided for information purposes only.