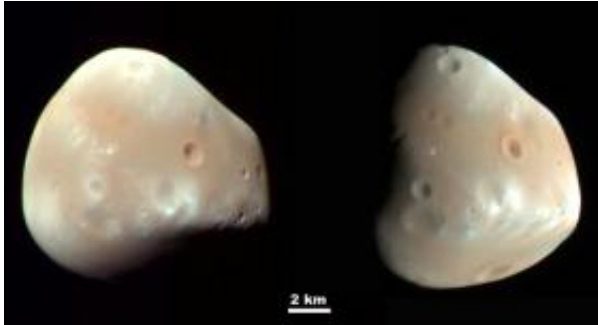


New Views of Martian Moon and Surface

9 March 2009



These color-enhanced views of Deimos, the smaller of the two moons of Mars, result from imaging on Feb. 21, 2009, by the High Resolution Imaging Science Experiment (HiRISE) camera on NASA's Mars Reconnaissance Orbiter. Image Credit: NASA/JPL-caltech/University of Arizona

(PhysOrg.com) -- New images from two observations of the Martian moon Deimos and more than 600 observations of Mars, acquired by the high-resolution camera (HiRISE) on NASA's Mars Reconnaissance Orbiter, became available for viewing Monday.

These color-enhanced views of [Deimos](#), the smaller of the two moons of [Mars](#), result from imaging on Feb. 21, 2009, by the [High Resolution Imaging Science Experiment \(HiRISE\)](#) camera on NASA's Mars Reconnaissance Orbiter.

Deimos has a smooth [surface](#) due to a blanket of fragmental rock or regolith, except for the most recent impact craters. It is a dark, reddish object, very similar to Mars' other moon, [Phobos](#). For a comparison, see HiRISE images of Phobos taken March 23, 2008.

These Deimos images combine HiRISE exposures in near-infrared, red and blue-green wavelengths. In the enhanced color, subtle color variations are visible -- redder in the smoothest areas and less red near the fresh impact craters and over ridges of topographic highs (relative to Deimos' center of

gravity). The color variations are probably caused by exposure of surface material to the space environment, which leads to darkening and reddening. Brighter and less-red surface materials have seen less exposure to space due to recent impacts or downslope movement of regolith.

Deimos is about 12 kilometers (7.5 miles) in diameter. Its orbital period is 1 day, 6 hours, 17.9 minutes.

These two images were acquired 5 hours and 35 minutes apart. The sun was to the upper left in the first (left) image, and to the right in the second image. The viewing geometry is similar in the two images, but surface features appear very different due to the change in illumination.

With an image scale of about 20 meters (66 feet) per pixel, features 60 meters (197 feet) or larger can be discerned.

These images are products from observations catalogued by the HiRISE team as ESP_012065_9000 and ESP_012068_9000. Other products from these observations are available at hirise.lpl.arizona.edu/deimos.php.

Provided by NASA

APA citation: New Views of Martian Moon and Surface (2009, March 9) retrieved 27 November 2020 from <https://phys.org/news/2009-03-views-martian-moon-surface.html>

This document is subject to copyright. Apart from any fair dealing for the purpose of private study or research, no part may be reproduced without the written permission. The content is provided for information purposes only.