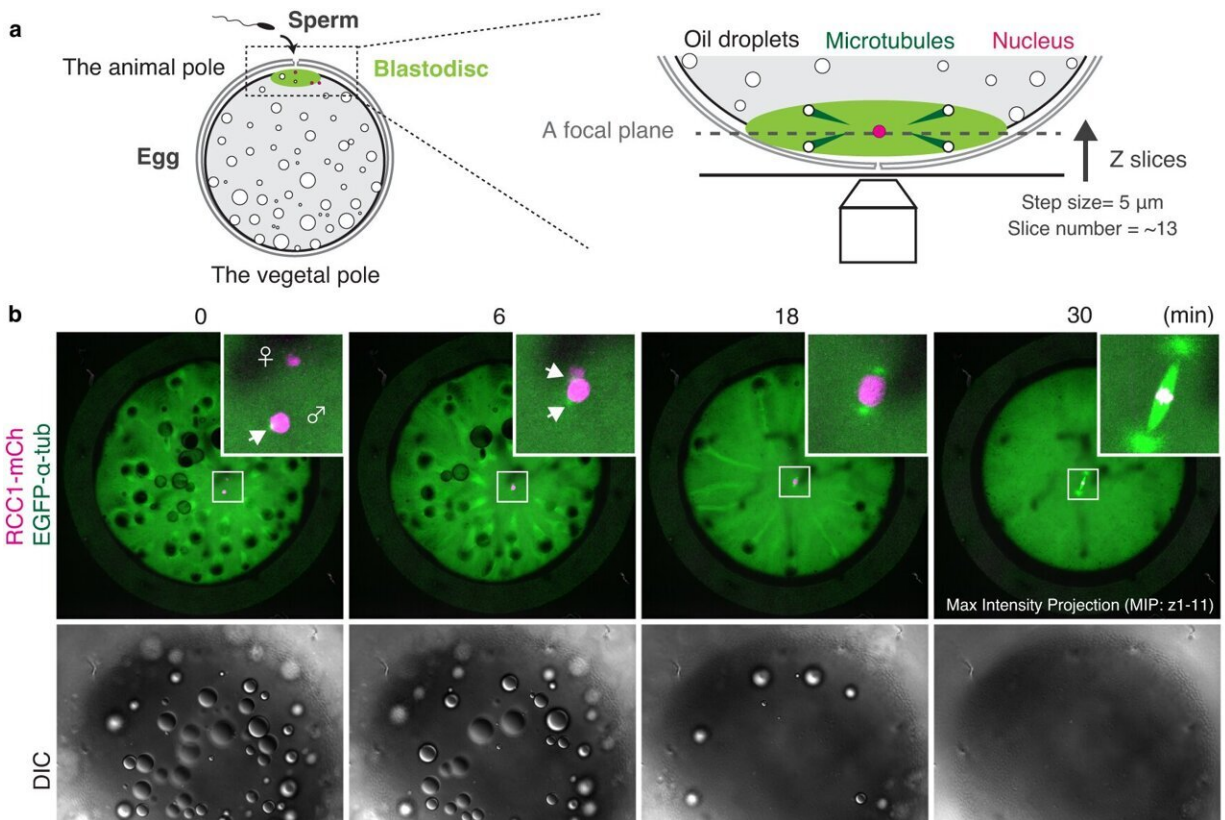


Unveiling the mysteries of cell division in embryos with timelapse photography

April 24 2024



Live imaging reveals dynamic behavior of chromosomes and MTs in medaka fertilized eggs. Credit: *Nature Communications* (2024). DOI: 10.1038/s41467-024-45251-w

The beginning of life is shrouded in mystery. While the intricate dynamics of mitosis are well-studied in the so-called somatic cells—the

cells that have a specialized function, like skin and muscle cells—they remain elusive in the first cells of our bodies, the embryonic cells. Embryonic mitosis is notoriously difficult to study in vertebrates, as live functional analyses and imaging of experimental embryos are technically limited, which makes it hard to track cells during embryogenesis.

However, researchers from the Cell Division Dynamics Unit at the Okinawa Institute of Science and Technology (OIST) have published [a paper in *Nature Communications*](#), together with Professors Toshiya Nishimura from Hokkaido University (previously at Nagoya University), Minoru Tanaka from Nagoya University, Satoshi Ansai from Tohoku University (currently at Kyoto University), and Masato T. Kanemaki from the National Institute of Genetics.

The study takes the first major steps towards answering questions about embryonic mitosis, thanks to a combination of novel imaging techniques, CRISPR/Cas9 genome editing technology, a modern protein-knockdown system, and medaka, or Japanese rice fish (*Oryzias latipes*).

The timelapses that they have produced help answer fundamental questions about the intricate process of equally dividing chromosomes during embryonic mitosis, and simultaneously chart the next frontier of scientific exploration. As Professor Tomomi Kiyomitsu, senior author of the study, describes the timelapses, saying, "They are beautiful, both on their own and because they lay a new foundation for elucidating embryonic mitosis."

Central to the mystery of embryonic mitosis is the crucial step when the chromosomes, which contain all the genetic information of the cell, are aligned and segregated equally into daughter cells. [A key player in this process is the mitotic spindle, which is made of microtubules](#)—long protein fibers used for intra-cellular structure and transport—that radiates from opposite poles of the spindle and attaches to the

chromosomes in the middle. The spindle captures duplicated chromosomes properly and segregates them equally into the daughter cells during division.

There are many factors determining spindle formation, and one of these is the protein Ran-GTP, which plays an essential role in cell division of female reproductive cells, which lack centrosomes—cell organelles responsible for assembling microtubules—but not in small somatic cells, which do have centrosomes. However, it has long been unclear whether Ran-GTP is required for spindle assembly in vertebrate early embryos, which contain centrosomes but have unique features, like a larger cell size.

In contrast to mammalian early embryos, [embryonic cells](#) in fish are transparent and develop synchronously in a uniform, single-cell layer sheet, which makes them significantly easier to track. The medaka turned out to be particularly well-suited for the researchers, as these fish tolerate a wide range of temperatures, produce eggs daily, and have a relatively small genome.

Being temperature-tolerant means that the medaka embryonic cells could survive at room temperature, making them particularly suited for long, live timelapse photography.

The fact that medaka produce eggs frequently and have a relatively small genome size makes them good candidates for CRISPR/Cas9-mediated genome editing. With this technology, the researchers have created genetically modified, or transgenic, medaka whose embryonic cells literally highlight the dynamics of certain proteins involved in mitosis.

In studying the timelapses of the developing [mitotic spindle](#) in live, transgenic medaka embryos, the researchers discovered that large early embryos assemble unique spindles different from somatic spindles. In

addition, Ran-GTP plays a decisive role in spindle formation in early embryonic divisions, but the importance diminishes in later stage embryos. This is possibly because the spindle structure is remodeled as cells get smaller during development, though the exact reason is a subject for future research.

The researchers also discovered that the early embryonic cells do not have a dedicated spindle assembly checkpoint, which characterizes most somatic cells, and which serves to ensure that the chromosomes are properly aligned before segregation.

As Professor Kiyomitsu says, "The checkpoint is not active, and yet the chromosome segregations are still very accurate. This could be explained by the fact that embryonic cells need to divide very quickly, but it is something that we want to study further."

While genetically modifying the medaka fish and studying the early embryos have led to new key insights into embryonic mitosis, this is just the beginning for Professor Kiyomitsu and the team.

In addition to questions related to the diminishing role of Ran-GTP in later stages and the missing spindle assembly checkpoint, he points to the satisfying symmetry of cell divisions in the timelapses. "The spindle formation is characterized by a high degree of symmetry, as the cells appear to be dividing in the sizes and defined directions, and the spindle is consistently in the center of the cells. How can the spindle orient itself so regularly across the cells, and how is it able to find the center every time?"

Moving beyond the timelapses, the team also hopes to further solidify this new foundation with additional medaka gene-lines to serve as models for research in embryonic cells, and at the same time optimize the genome editing process.

Eventually, the team wants to test for generalizability of their findings by studying embryonic mitosis in other organisms, and at a later stage, they want to explore the evolution of spindle assembly and embryonic divisions, which would also contribute to a better understanding of human embryogenesis and to developing diagnosis and treatment of human infertility.

"With this paper, we have created a solid foundation," says Professor Kiyomitsu, "but we have also opened a new frontier. Embryonic mitosis is beautiful, mysterious, and challenging to study, and we hope that with our work, we can eventually get a little closer to understanding the intricate processes at the beginning of life."

More information: Ai Kiyomitsu et al, Ran-GTP assembles a specialized spindle structure for accurate chromosome segregation in medaka early embryos, *Nature Communications* (2024). [DOI: 10.1038/s41467-024-45251-w](https://doi.org/10.1038/s41467-024-45251-w)

Provided by Okinawa Institute of Science and Technology

Citation: Unveiling the mysteries of cell division in embryos with timelapse photography (2024, April 24) retrieved 23 June 2024 from <https://phys.org/news/2024-04-unveiling-mysteries-cell-division-embryos.html>

This document is subject to copyright. Apart from any fair dealing for the purpose of private study or research, no part may be reproduced without the written permission. The content is provided for information purposes only.