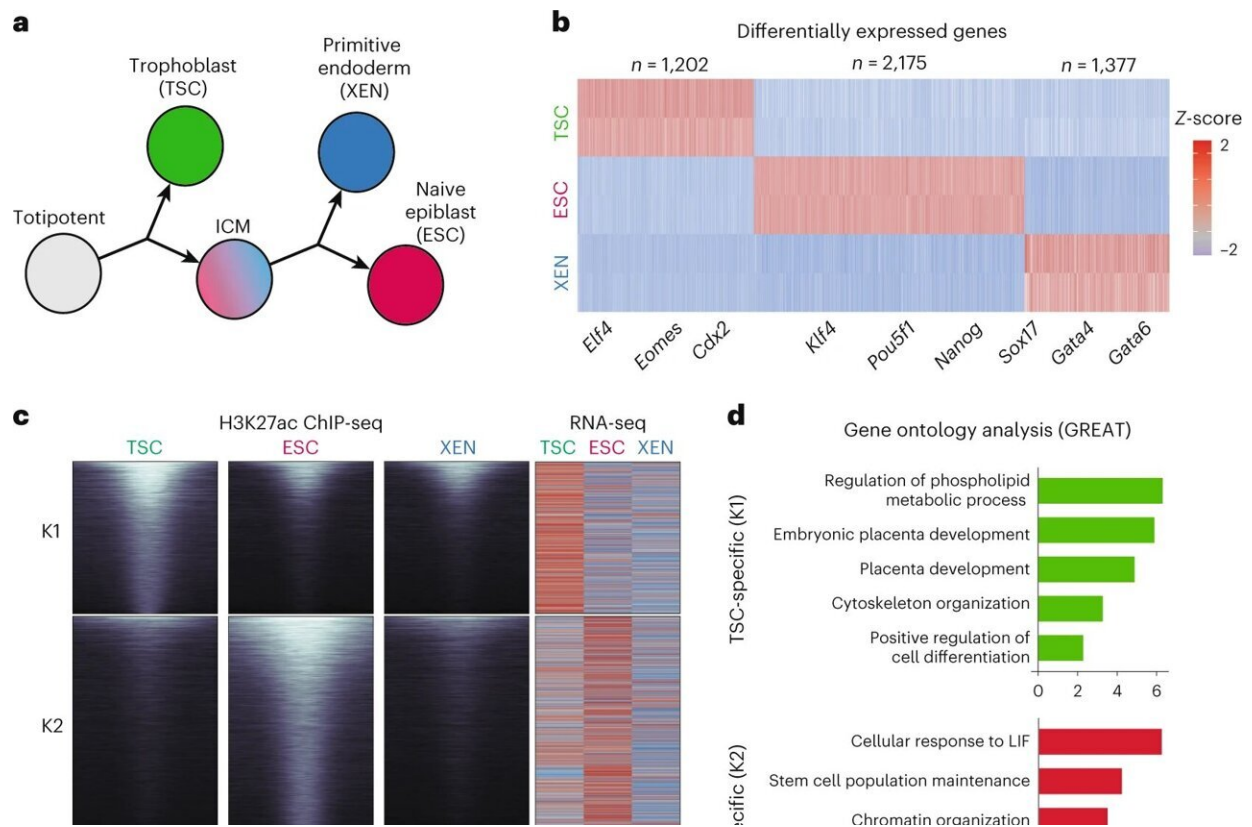


# Study shows 3D organization of DNA controls cell identity programs

January 2 2024, by Bridget Kuehn



Transcriptional changes and enhancer remodeling accompany early developmental decisions. **a**, Schematic illustration depicting the cell lines used to model early developmental fate decisions. ICM, inner cell mass. **b**, Heatmap showing TSC, ESC, and XEN cell signature genes, which are significantly upregulated in the respective cell line compared to the other two lineages (transcripts per million, TPM > 1, logFC > 2 and *P*-adjusted

Citation: Study shows 3D organization of DNA controls cell identity programs (2024, January 2)  
retrieved 27 April 2024 from <https://phys.org/news/2024-01-3d-dna-cell-identity.html>

This document is subject to copyright. Apart from any fair dealing for the purpose of private study or research, no part may be reproduced without the written permission. The content is provided for information purposes only.