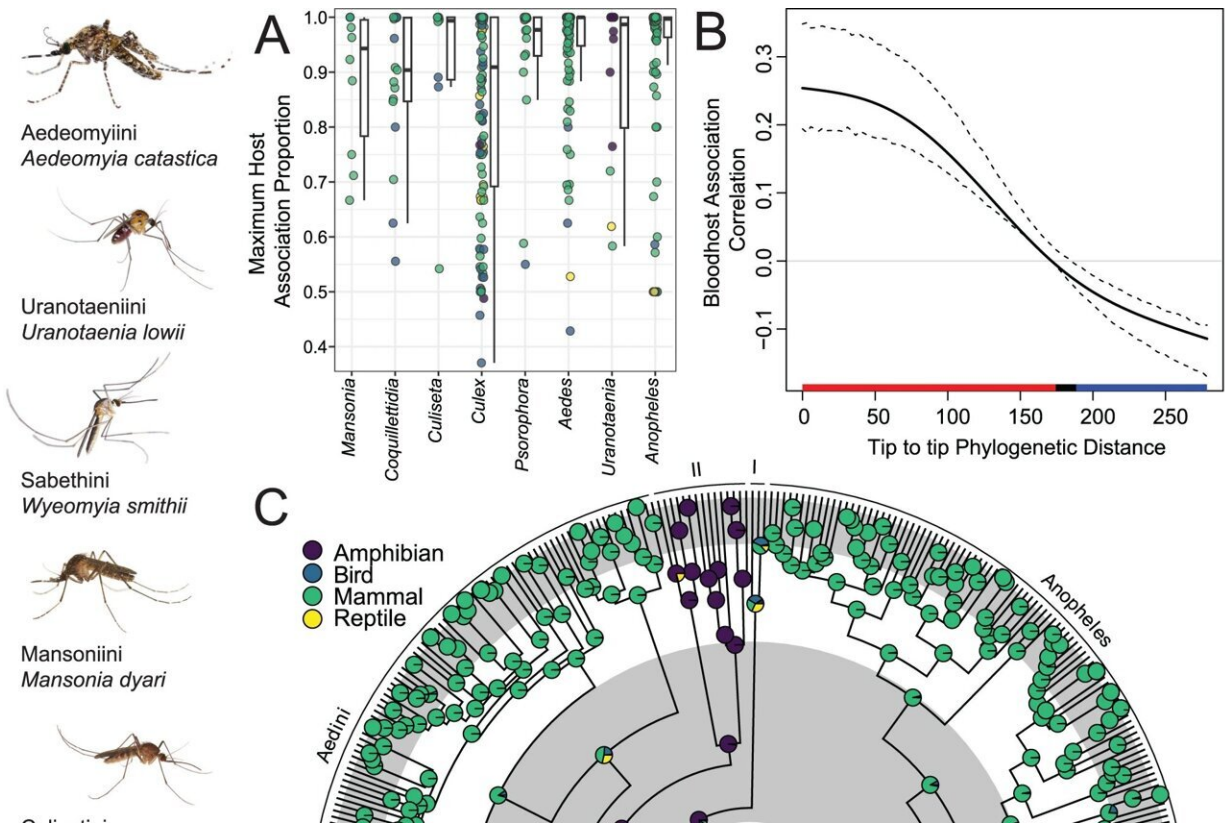


# Study elucidates evolution of mosquitoes and their hosts

October 18 2023, by Mick Kulikowski



Macroevolutionary analyses of host associations for blood-feeding in mosquitoes based on 293,308 bloodmeal records from 422 different mosquito species. **A** The maximum host association score among several genera indicating that many genera have a high degree of class-level host association, although there are exceptions. Each point is a species in a given genus. Boxplots for each genus show median max host association values as black bars, along with interquartile ranges as boxes. Whiskers are drawn to  $\pm 1.5$  times the interquartile range. **B** Vertebrate host association contains significant phylogenetic signal as estimated

by a phylogenetic Mantel test (shown) and multivariate Blomberg's  $K = 0.06$ ,  $P$

Citation: Study elucidates evolution of mosquitoes and their hosts (2023, October 18) retrieved 27 April 2024 from <https://phys.org/news/2023-10-elucidates-evolution-mosquitoes-hosts.html>

This document is subject to copyright. Apart from any fair dealing for the purpose of private study or research, no part may be reproduced without the written permission. The content is provided for information purposes only.