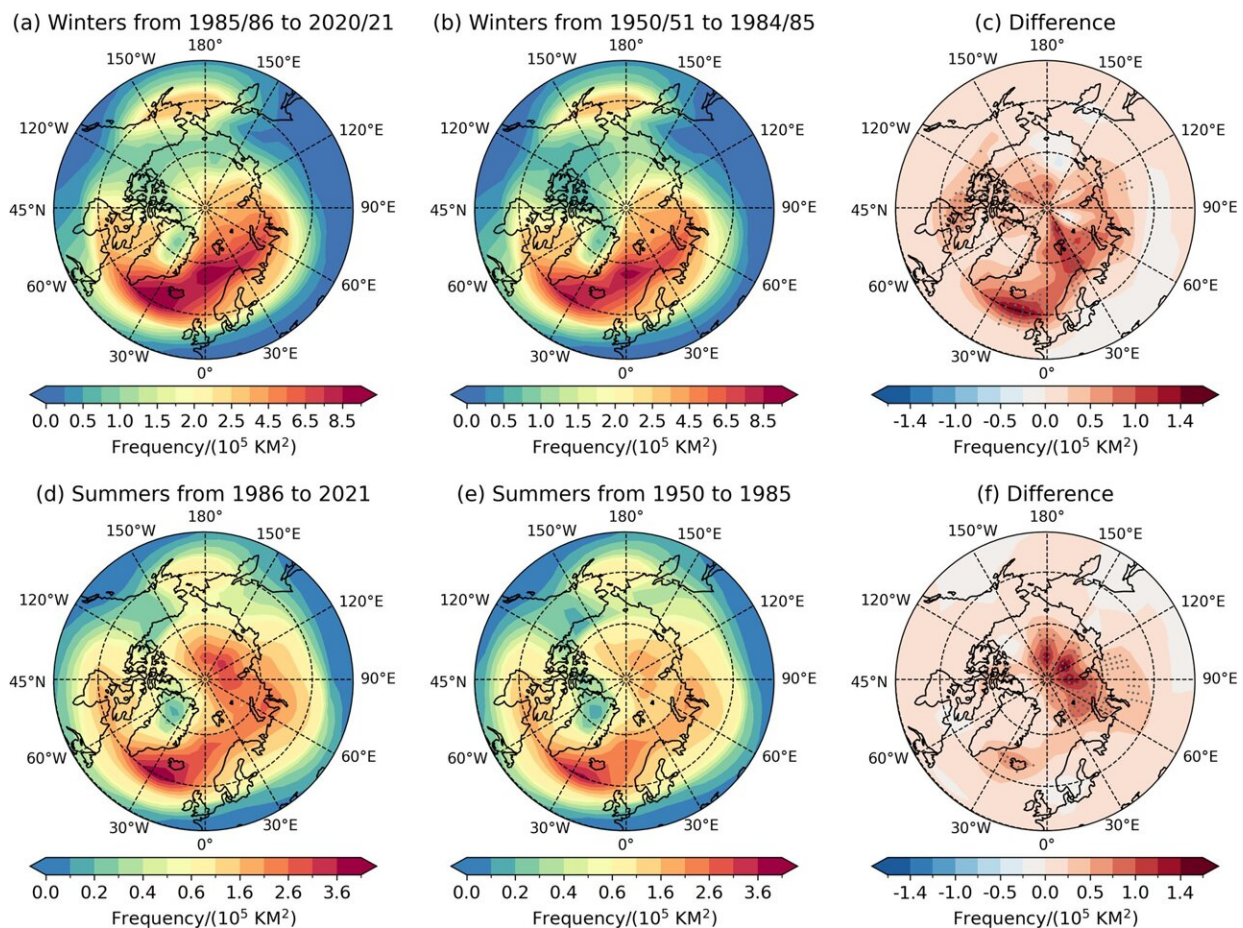


New study suggests cyclones in the Arctic are forming more often and getting stronger

October 26 2023, by Bob Yirka



Spatial structure of Arctic cyclone frequency. Frequency of occurrence of strong cyclones that propagate into or are generated locally within the Arctic region (north of 60°N) for the winters from a 1985/86 to 2020/21 and b 1950/51 to 1984/85. c shows the differences between (a) and (b). d–f are the same as (a–c) but for the summers from 1986 to 2021 and from 1950 to 1985. The dots in (d) and (f) indicate that the differences are statistically significant at the level of p

Citation: New study suggests cyclones in the Arctic are forming more often and getting stronger (2023, October 26) retrieved 28 April 2024 from <https://phys.org/news/2023-10-cyclones-arctic-stronger.html>

This document is subject to copyright. Apart from any fair dealing for the purpose of private study or research, no part may be reproduced without the written permission. The content is provided for information purposes only.