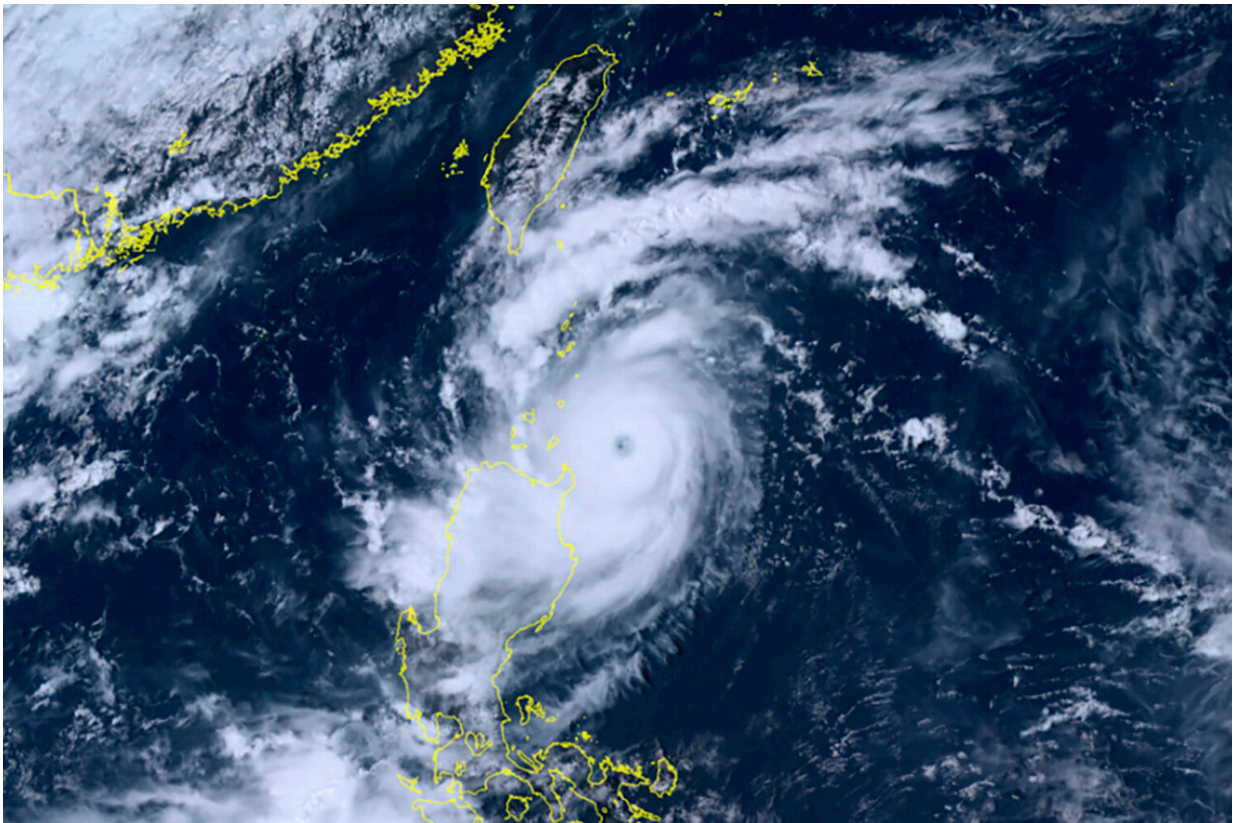


# Typhoon Saola strengthens as it passes Taiwan on its way to China

August 30 2023, by Huizhong Wu

---



This satellite image provided by courtesy of the National Institute of Information and Communications Technology (NICT) shows Typhoon Saola moving north towards Taiwan, Tuesday, Aug. 29, 2023. Taiwan's weather authorities warned residents of heavy rain and strong winds starting Wednesday as Typhoon Saola skirts by the island's southern coast on its way to China's southern coast. (Courtesy of National Institute of Information and Communications Technology (NICT) via AP)

Typhoon Saola strengthened overnight as it continued its path across the Pacific early Wednesday and headed for China's southern coast.

The typhoon was moving northwest with sustained winds of 191 kph (118 mph) and gusts of up to 234 kph (145 mph), according to Taiwan's Central Weather Bureau, and is now considered a strong typhoon. The typhoon's eye won't hit Taiwan's mainland, but the storm's outer bands will hit the island's southern cities.

The weather bureau also warned of heavy rain and [strong winds](#) in Taiwan's southern cities, especially southern Pingtung county. The typhoon is currently traveling directly south of Taiwan, in the Bashi Channel, the band of ocean that separates Taiwan and the Philippines.

The typhoon passed by the Philippines earlier this week, without any reports of casualties so far. However, in the northern part of the islands, the typhoon's torrential rains and fierce winds enhanced seasonal monsoon rains, flooding low-lying villages and displacing nearly 50,000 people, including 35,000 villagers, who fled to government-run evacuation centers. Seaports suspended inter-island ferry services due to rough seas, and more than a hundred houses were damaged.

The [typhoon](#) is expected to hit China's southern Fujian and Guangdong provinces on Friday. China's National Meteorological Center said the storm is expected to weaken as it approaches land.

© 2023 The Associated Press. All rights reserved. This material may not be published, broadcast, rewritten or redistributed without permission.

Citation: Typhoon Saola strengthens as it passes Taiwan on its way to China (2023, August 30) retrieved 28 June 2024 from <https://phys.org/news/2023-08-typhoon-saola-taiwan-china.html>

This document is subject to copyright. Apart from any fair dealing for the purpose of private

study or research, no part may be reproduced without the written permission. The content is provided for information purposes only.