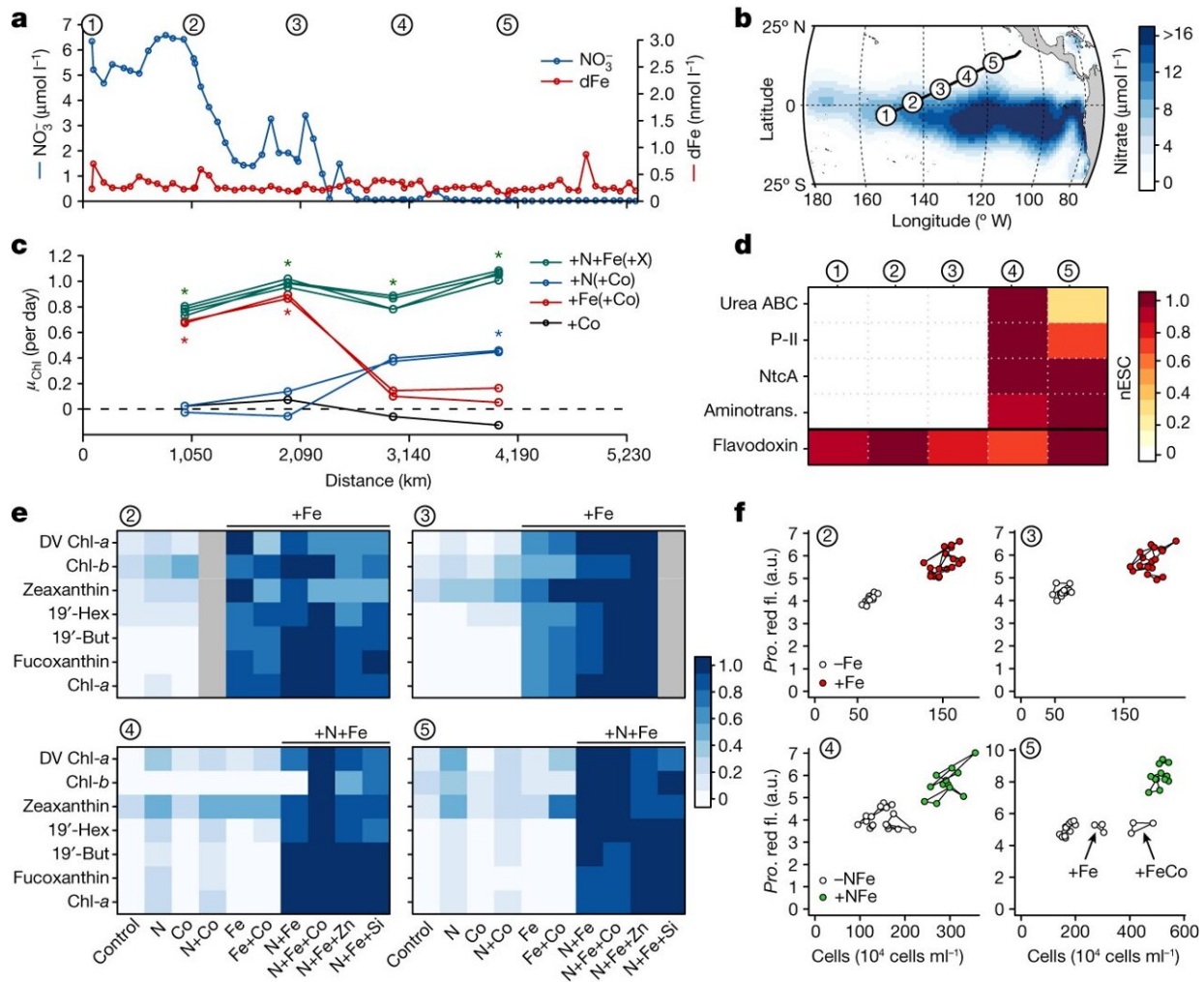


# Assessing controls on ocean productivity—from space

August 16 2023



Tropical Pacific nutrient limitation transition. **a**, Concentrations of nitrate and dissolved Fe (dFe), with vertical axes scaled according to assumed-average phytoplankton requirements (such that the lower line is the more deficient nutrient; N/Fe of 2,132:1 mol/mol). Circled numbers represent major sampling

sites. **b**, Broader regional nitrate gradient. **c**, Summarized net chlorophyll *a* growth in nutrient-addition experiments. Dots are means of triplicates; overlapping lines or symbols of the same color indicate equivalent treatments except that another nutrient was added in addition to N and/or Fe (either Co, Zn or Si; as indicated by '+X' for N + Fe lines). Asterisks indicate significant chlorophyll *a* enhancements over non-amended control (ANOVA followed by Tukey's post hoc test,  $\alpha$

Citation: Assessing controls on ocean productivity—from space (2023, August 16) retrieved 27 April 2024 from <https://phys.org/news/2023-08-ocean-productivityfrom-space.html>

This document is subject to copyright. Apart from any fair dealing for the purpose of private study or research, no part may be reproduced without the written permission. The content is provided for information purposes only.