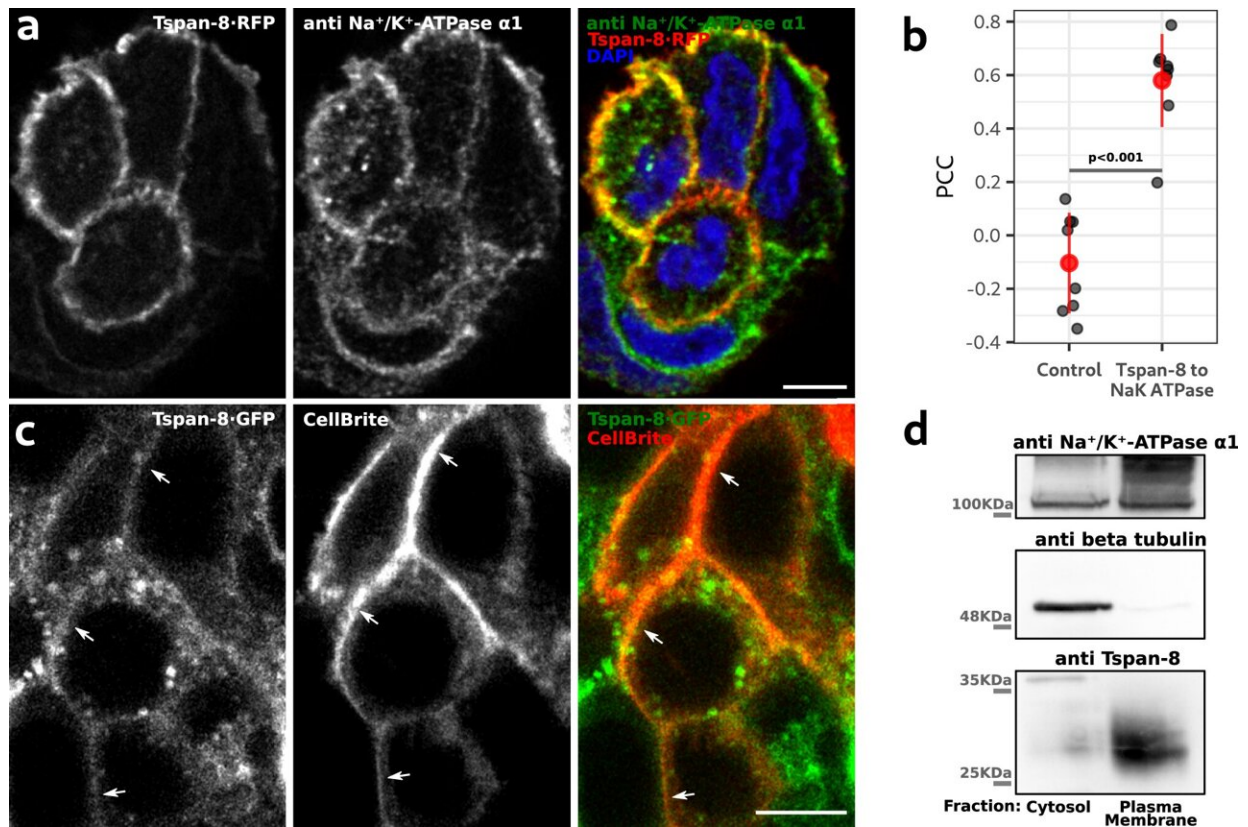


'Traffic control' system for mucin and insulin secretion identified

July 3 2023



Tetraspanin 8 is localized at the plasma membrane of mucin-secreting cells. **a** Optical plane of a representative confocal image of mucin-secreting cells transfected with Tspan-8-RFP and immunolabelled for the Na⁺/K⁺-ATPase α1. Right image shows the merge of the two. Scale bar is 5 μm. **b** Quantification of the Pearson Correlation Coefficient (PCC) between Tspan-8-RFP and Na⁺/K⁺-ATPase α1. As control, Na⁺/K⁺-ATPase α1 images were rotated 90° right and the PCC was calculated. Each dot represents the PCC of one image with at least three cells. $n = 9$. The red dot is the mean value of the gray dots +/-

the standard deviation. One-way ANOVA test p

Citation: 'Traffic control' system for mucin and insulin secretion identified (2023, July 3)
retrieved 29 April 2024 from <https://phys.org/news/2023-07-traffic-mucin-insulin-secretion.html>

This document is subject to copyright. Apart from any fair dealing for the purpose of private study or research, no part may be reproduced without the written permission. The content is provided for information purposes only.