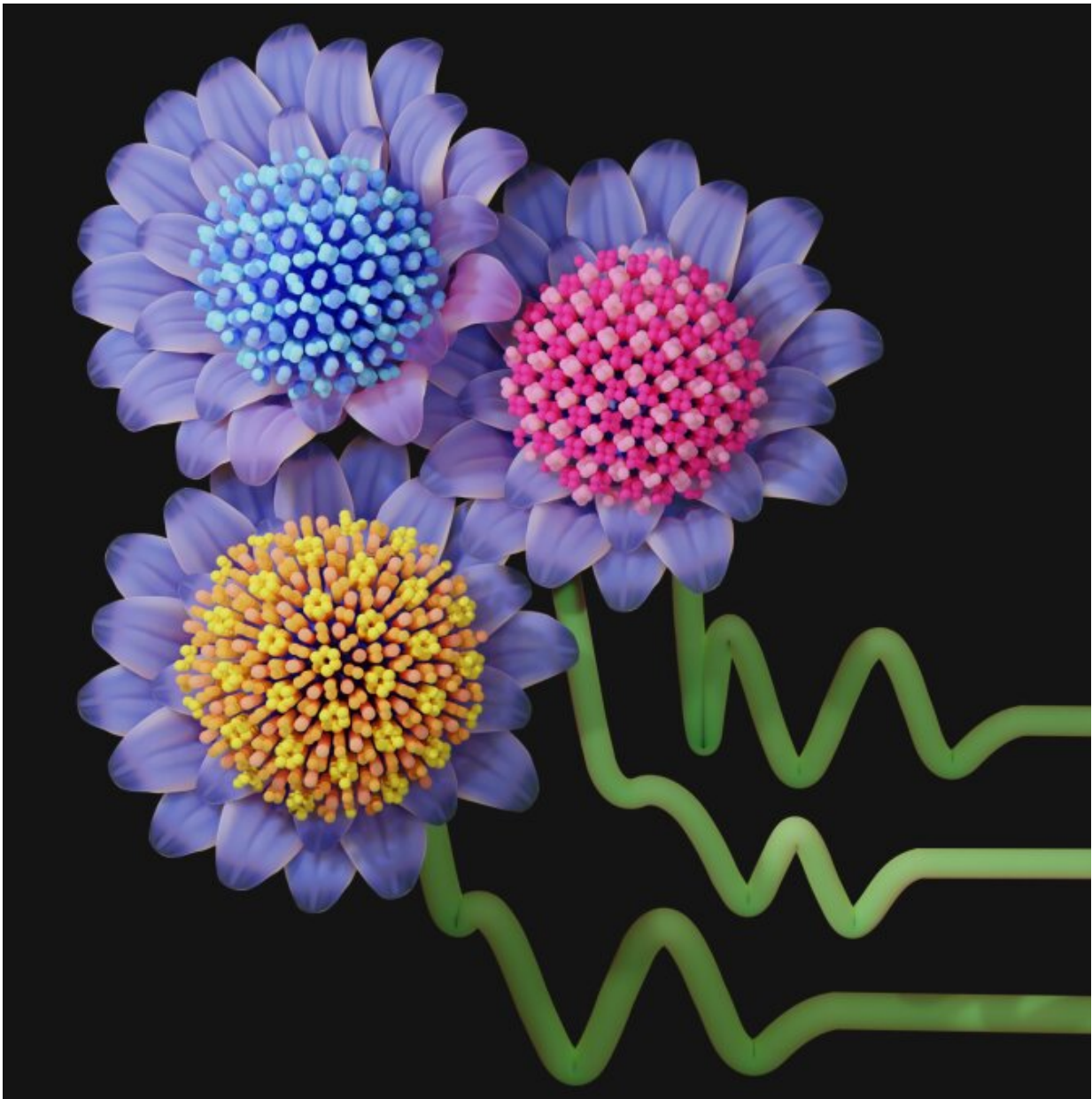


Researchers discover new self-assembled crystal structures

April 24 2023, by Eric Laine



Conceptual image showcasing several interaction potential shapes, represented by stems, that will lead to the self-assembly of new low-coordinated crystal structures, represented by flowers. Credit: Hillary Pan

Using a targeted computational approach, researchers in the Department of Materials Science and Engineering at Cornell University have found more than 20 new self-assembled crystal structures, none of which had been observed previously.

The research, published in the journal *ACS Nano* under the title "Targeted Discovery of Low-Coordinated Crystal Structures via Tunable Particle Interactions," is authored by Ph.D. student Hillary Pan and her advisor Julia Dshemuchadse, assistant professor of materials science and engineering.

"Essentially we were trying to figure out what kinds of new [crystal structure](#) configurations we can self-assemble in simulation," Pan said. "The most exciting thing was that we found new structures that weren't previously listed in any crystal structure database; these particles are actually assembling into something that nobody had ever seen before."

The team conducted a targeted search for previously unknown low-coordinated assemblies within a vast parameter space spanned by particles interacting via isotropic pair potentials, the paper states. "Low-coordinated structures have anisotropic local environments, meaning that the geometries are highly directional, so it's incredible that we're able to see such a variety of these types of structures using purely non-directional interactions," said Pan.

Low particle coordination is a structural characteristic key to the

functional properties of many technologically important materials including framework structures such as metal-organic frameworks, [clathrates](#), and zeolites as well as photonic crystals such as diamond.

The researchers developed a new functional form for [particle interactions](#) in which all features can be tuned independently. By systematically changing pairs of parameters in simulation, the researchers were able to control various features of the particles' interaction landscape. Despite limiting the search to a small region of the vast parameter space of possible particle interactions, the paper states, a wealth of complexity and [symmetry](#) is apparent within these crystal structures, which include clathrates with empty cages and low-symmetry structures, which had also not been observed previously in simulation.

The work demonstrates that complicated structures can develop from simple interactions and adds new theoretical structures for others working in the field. The team's flexible and intuitive interaction potential design serves as an important step towards determining the characteristics of particle interactions that lead to certain structural properties, useful for establishing synthetic rules to make target structures.

The team's findings suggest that there are potentially limitless new and exotic materials configurations possible through controlled self-assembly. "This is the first time that we're quantifying the relationship of this isotropic pair potential with the crystal structures that result," Dshemuchadse said. "These new crystal structures can now serve as design targets for researchers who actually make nanoparticles and colloids."

More information: Hillary Pan et al, Targeted Discovery of Low-Coordinated Crystal Structures via Tunable Particle Interactions, *ACS Nano* (2023). [DOI: 10.1021/acsnano.2c09131](https://doi.org/10.1021/acsnano.2c09131)

Provided by Cornell University

Citation: Researchers discover new self-assembled crystal structures (2023, April 24) retrieved 11 May 2024 from <https://phys.org/news/2023-04-self-assembled-crystal.html>

This document is subject to copyright. Apart from any fair dealing for the purpose of private study or research, no part may be reproduced without the written permission. The content is provided for information purposes only.