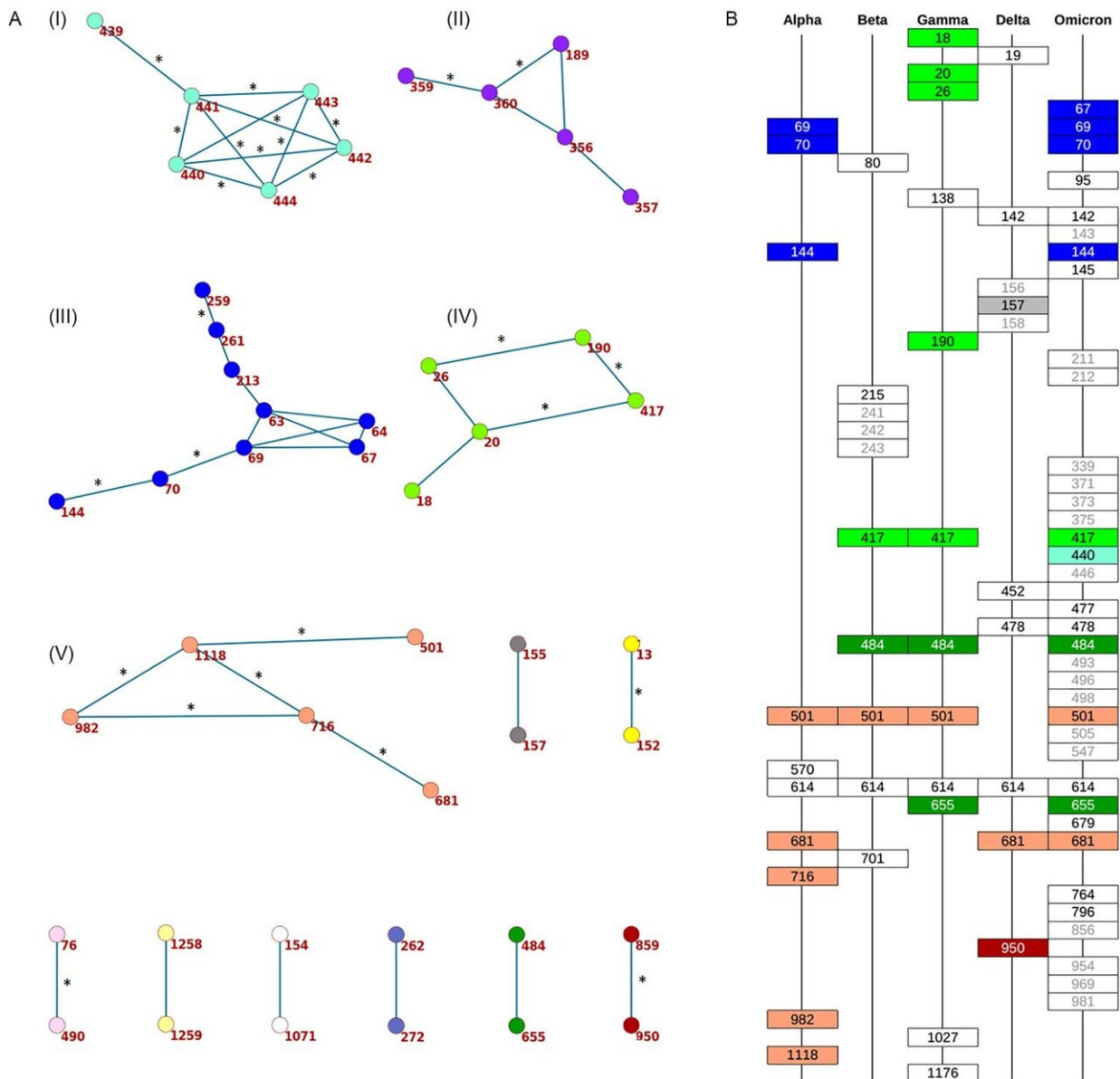


Researchers explain origins of dangerous coronavirus variants

April 28 2023



Concordantly evolving sites in SARS-CoV-2 Spike protein. (A) Clusters of concordantly evolving sites. Graph vertices represent sites, and edges represent concordantly evolving pairs (Appendix 1—table 7). The graph consists of 13 connected components, 8 of which contain just a single edge. Site pairs that were among the set of the best scoring pairs predicted for the alternative UShER (Turakhia et al., 2021) topology (FDR

Citation: Researchers explain origins of dangerous coronavirus variants (2023, April 28)
retrieved 24 April 2024 from
<https://phys.org/news/2023-04-dangerous-coronavirus-variants.html>

This document is subject to copyright. Apart from any fair dealing for the purpose of private study or research, no part may be reproduced without the written permission. The content is provided for information purposes only.