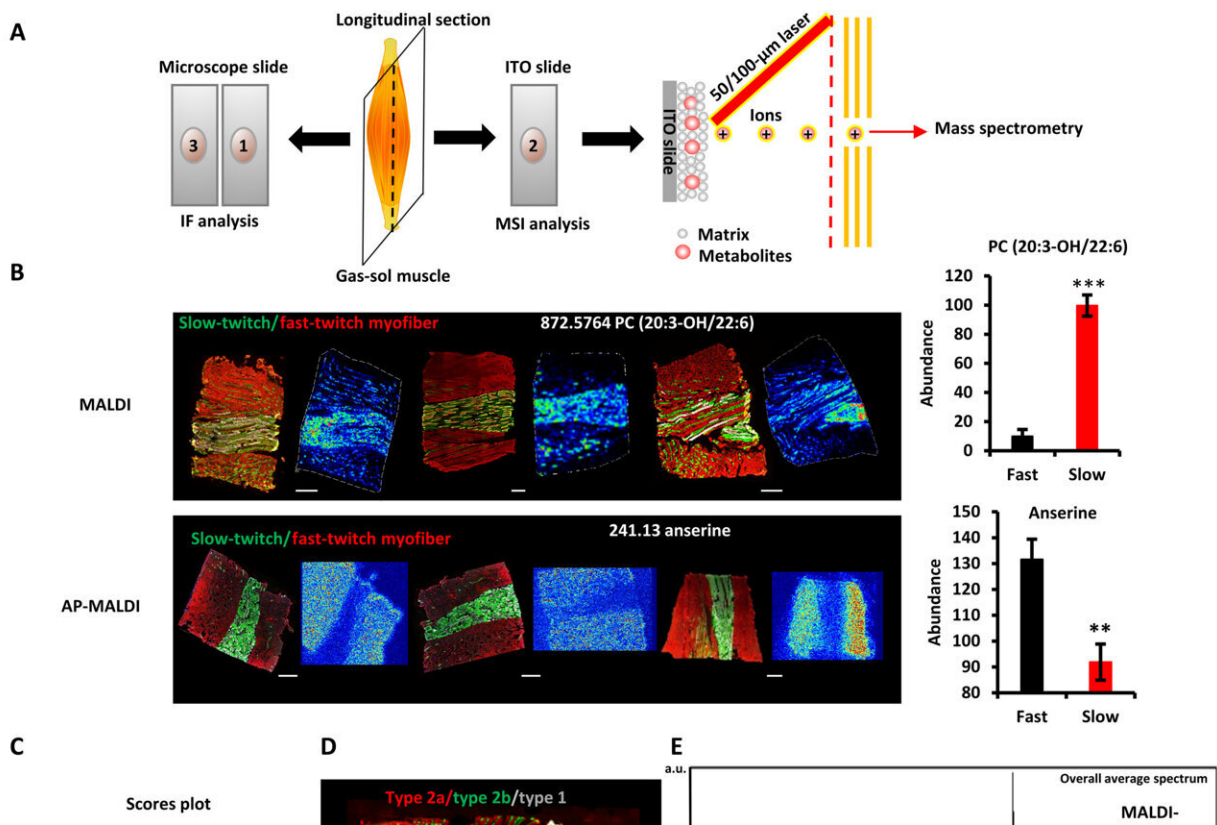


# Scientists discover rare superfast muscles in mouse legs

February 6 2023, by Zhang Nannan



Reproducibility of metabolomic fingerprints of slow- and fast-twitch myofibers in MSI. (A) Schematic of the MSI workflow. Every three consecutive sections from the muscle were prepared as a group, with the first and third sections used for immunofluorescence (IF) analysis and the middle sections used for MSI analysis. (B) Fingerprint metabolites of slow- and fast-twitch myofibers detected by AP-MALDI-QTOF and MALDI-FTICR (left). Multicolor immunofluorescence staining of the GAS-SOL muscle (right). Means  $\pm$  SEM; N = 3; \*\*P

Citation: Scientists discover rare superfast muscles in mouse legs (2023, February 6) retrieved 15 June 2024 from <https://phys.org/news/2023-02-scientists-rare-superfast-muscles-mouse.html>

This document is subject to copyright. Apart from any fair dealing for the purpose of private study or research, no part may be reproduced without the written permission. The content is provided for information purposes only.