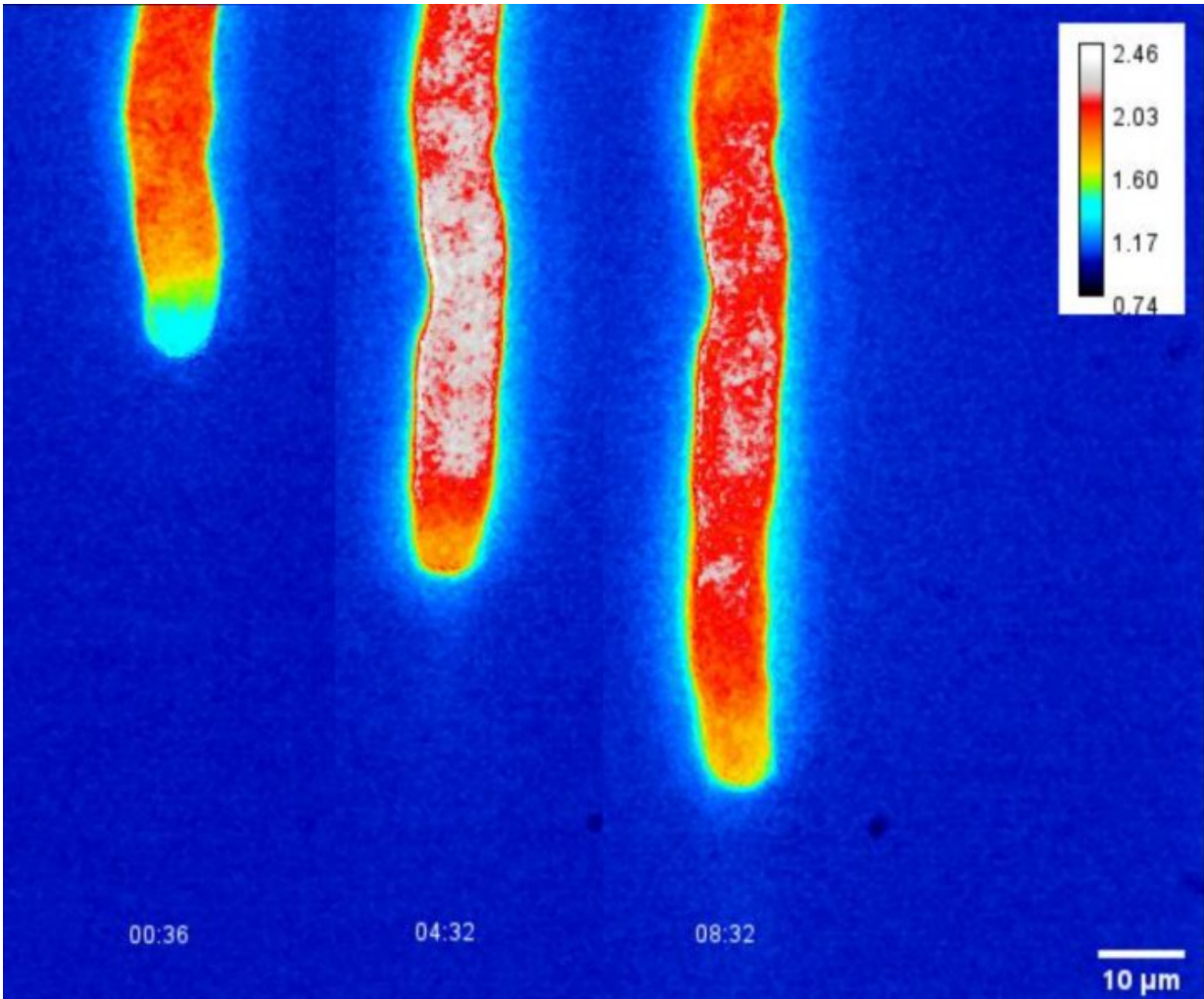


Bioenergetics of rapid pollen tube growth

January 4 2023



Application of energy biosensors in measuring pollen tube growth. Credit: Jinhong Liu

Sexual reproduction of plants requires pollen to land on the stigma, which then germinates and grows pollen tubes through the style to deliver sperm cells to the ovule. Pollen tubes are the fastest-growing plant cells known. Studies have shown that the growth rate of maize pollen tubes can reach up to 2.8 microns per second, while the growth rate of lily pollen tubes can also reach 0.2 to 0.3 microns per second.

This polarized growth process consumes a tremendous amount of energy, which involves coordinated energy fluxes between plastids, the cytosol, and mitochondria. Such an astonishing growth rate requires efficient energy in huge amounts for metabolism and continuous synthesis of the plasma membrane and cell wall—the question is: Where does the energy come from?

A research team led by Dr. Boon Leong Lim of the School of Biological Sciences at The University of Hong Kong (HKU) developed practical biosensors to measure real-time dynamic changes of energy currency in living plant cells and organelles, which reveals how Arabidopsis pollen tubes gain energy to sustain their rapid growth.

Unlike leaf cells, pollen tubes do not perform photosynthesis and mainly rely on a sugar supply from the style to generate energy molecules such as Adenosine triphosphate (ATP), nicotinamide-adenine dinucleotide phosphate (NADPH), and [nicotinamide adenine dinucleotide](#) (NADH) to support pollen tube growth. Fatty acids (FA), the building blocks of the plasma membrane of the pollen tube, are synthesized in the pollen plastid, a precursor organelle of the chloroplast that does not contain chlorophyll. The synthesis of FA in pollen plastid consumes a large amount of ATP, NADPH, NADH, and acetyl coenzyme A (acetyl-CoA), an important metabolic intermediate.

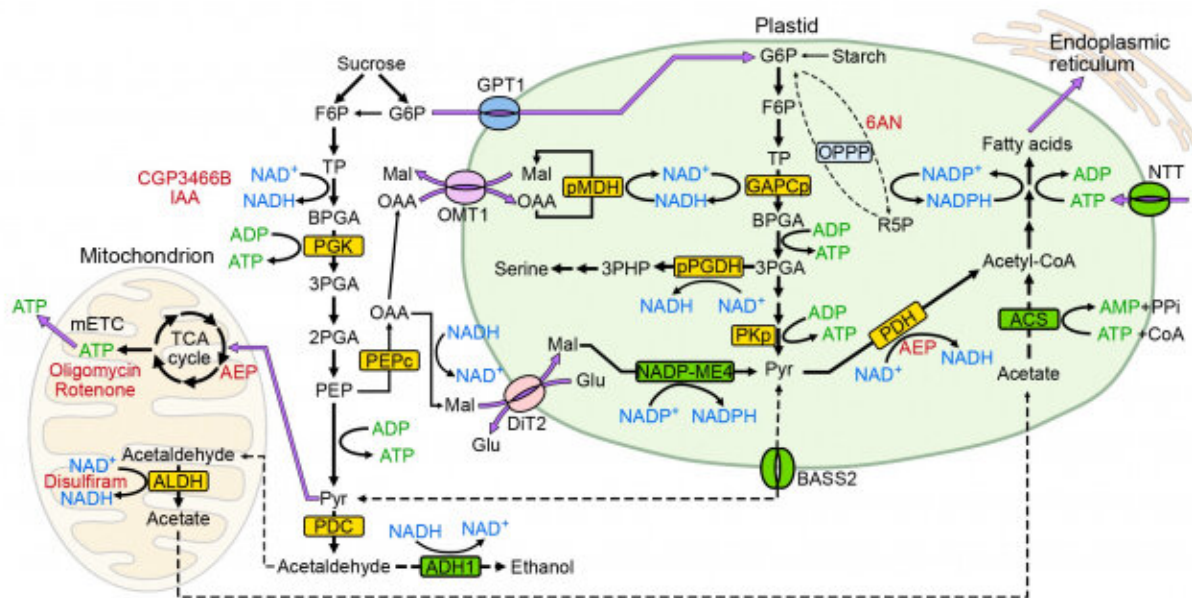
There are multiple possible routes of supplying ATP, NADPH, NADH, and acetyl-CoA for FA synthesis, but the exact mechanisms are obscure

due to the small size of pollen tubes and the lack of tools to measure the concentrations of ATP, NADPH, and NADH in pollen plastids and the cytosol.

The team developed second-generation fluorescence NADPH and NADH/NAD⁺ ratio protein sensors and introduced these biosensors to the plastids and the cytosol of *Arabidopsis* pollen tube, thereby revealing the bioenergetics of pollen tube growth. Led by Dr. Boon Leong Lim, the team recently published their findings in the journal *Nature Communications*, titled "Bioenergetics of pollen tube growth in *Arabidopsis thaliana* revealed by ratiometric genetically encoded biosensors."

By treating germinating pollen tubes with specific drugs, mitochondrial respiration was shown to be the main source of cytosolic ATP in *Arabidopsis* pollen tubes. Plastid ATP is mainly supplied by plastid glycolysis as well as importation from the cytosol through the nucleotide transporter (NTT) on the plastid membrane.

As for the supply of plastid NADPH, the plastid malic enzyme NADP-ME4 is a more important pathway than the oxidative pentose phosphate pathway (OPPP).



Model of the bioenergetics of Arabidopsis pollen tube growth. Credit: Boon Leong Lim

Although [anaerobic respiration](#) and pyruvate dehydrogenase (PDH) bypass are considered vital for supplying acetyl-CoA for plastid FA synthesis in tobacco [pollen tubes](#), these pathways are not important in Arabidopsis pollen tube growth. Instead, plastid glycolysis is a more important source of acetyl-CoA for [fatty acid synthesis](#).

The conversion of NADH and NAD⁺ in plastids appears to be much more complex. While plastid glycolysis and plastid PDH pathway generate a substantial amount of NADH for FA synthesis, surplus NADH has to be converted back to NAD⁺ in pollen plastid by NAD-malate dehydrogenase (pNAD-MDH) to sustain plastid glycolysis.

This research not only developed more practical biosensors to measure [real-time](#) dynamic changes of ATP, NADPH, NADH/NAD⁺ in living

plant cells and organelles, but also reveals the exact biochemical routes of supplying ATP, NADPH, NADH, and acetyl-CoA for FA synthesis in [pollen](#) plastids.

Ms. Jinhong Liu, the first author of the article and a Ph.D. student of Lim's group remarked, "The in planta fluorescence protein sensors we developed are powerful tools for solving some key questions in plant bioenergetics. We are happy to publish two manuscripts in *Nature Communications* in 2022 on our discoveries using this novel technology."

[Editor's note: The [earlier manuscript](#) was [published](#) in *Nature Communications* in February 2022, titled, "Arabidopsis guard cell chloroplasts import cytosolic ATP for starch turnover and stomatal opening."]

More information: Jinhong Liu et al, Bioenergetics of pollen tube growth in *Arabidopsis thaliana* revealed by ratiometric genetically encoded biosensors, *Nature Communications* (2022). [DOI: 10.1038/s41467-022-35486-w](#)

Provided by The University of Hong Kong

Citation: Bioenergetics of rapid pollen tube growth (2023, January 4) retrieved 10 May 2024 from <https://phys.org/news/2023-01-bioenergetics-rapid-pollen-tube-growth.html>

This document is subject to copyright. Apart from any fair dealing for the purpose of private study or research, no part may be reproduced without the written permission. The content is provided for information purposes only.
