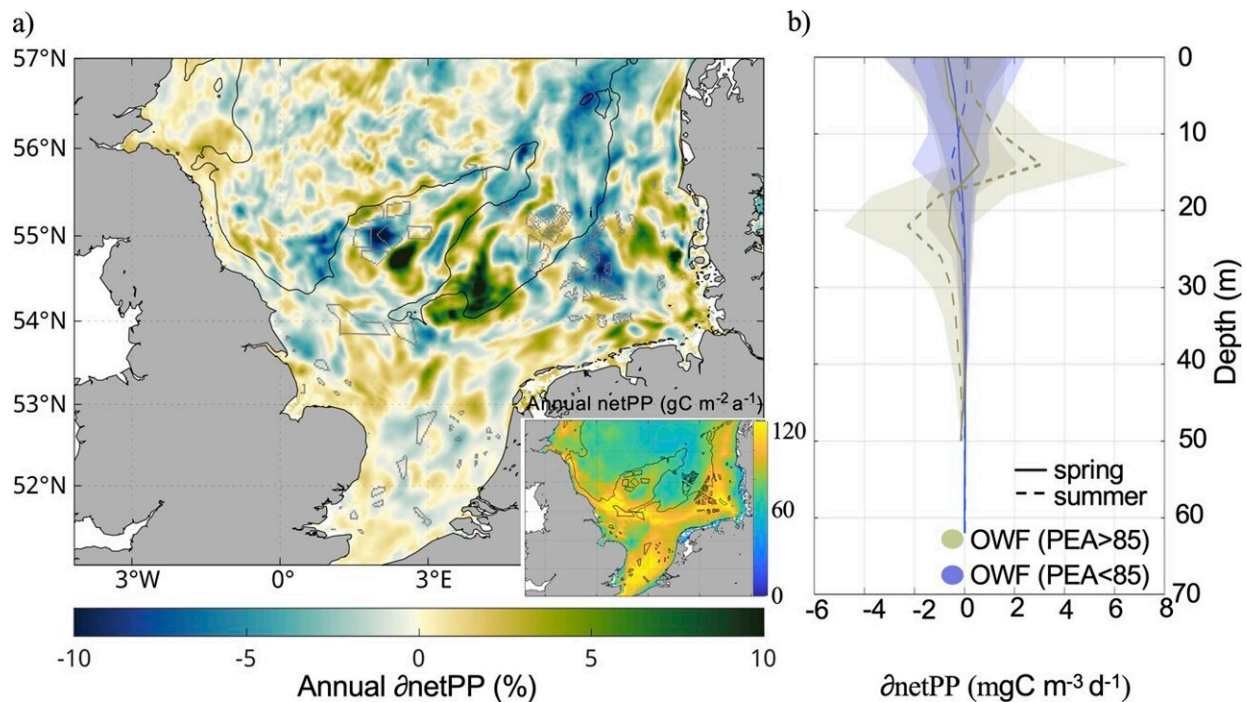


Offshore wind farms change marine ecosystems, study shows

November 28 2022



Annual mean response of net primary productions (netPP) to atmospheric changes due to offshore wind farms. a Relative change in annual averaged net primary production for 2010 (OWF-REF). Black contour line indicates potential energy anomaly (PEA) of 85 J m⁻³ roughly separating seasonally stratified from mixed areas; gray polygons indicate location of considered offshore wind farms (insert: annual average of netPP simulated for 2010). b Vertical profiles of change (mean and standard deviation) in netPP inside the offshore wind farm areas; blue: less stratified and mixed areas (PEA

Citation: Offshore wind farms change marine ecosystems, study shows (2022, November 28)
retrieved 20 March 2024 from <https://phys.org/news/2022-11-offshore-farms-marine-ecosystems.html>

This document is subject to copyright. Apart from any fair dealing for the purpose of private study or research, no part may be reproduced without the written permission. The content is provided for information purposes only.