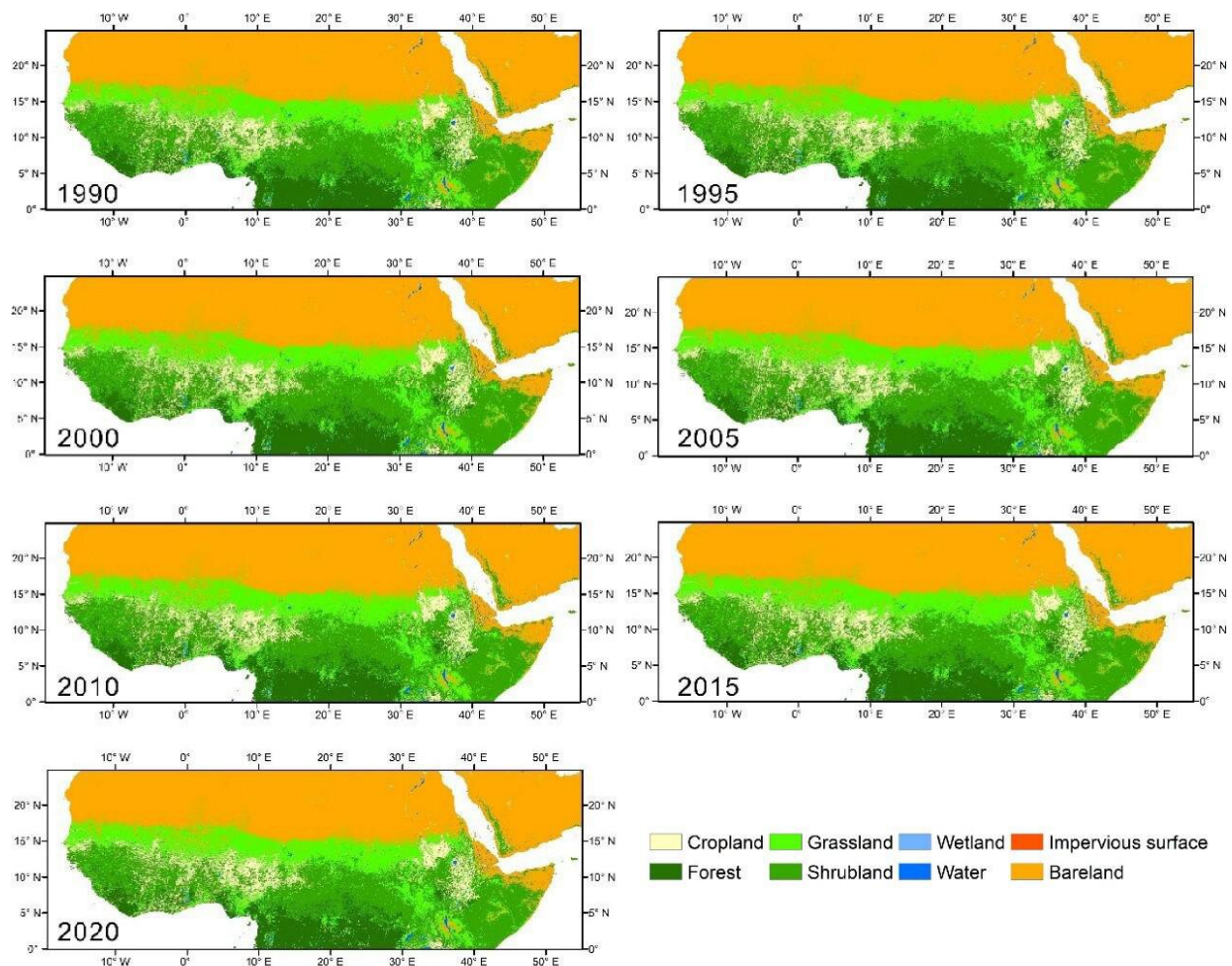


# Datasets reveal impacts of land use and cover change on the Sahel-Sudano-Guinean region in Africa

July 7 2022, by Li Yuan



Credit: Chinese Academy of Sciences

The Sahel-Sudano-Guinean region has been experiencing significant land use and land cover change in the last decades due to climatic and anthropic impacts. A better understanding of these changes is essential for sustainable land and water management in the region.

Four datasets on the Sahel-Sudano-Guinean region of Africa have been recently released on the platform of the [National Tibetan Plateau / Third Pole Environment Data Center](#).

The datasets are based on the project "Driving Mechanisms and Impacts of Land Use and Cover Change in the Sahel: Responses and Impacts," which was jointly supported by the National Natural Science Foundation of China (NSFC) International Cooperation and Exchange Program and the United Nations Environment Program (UNEP). The NSFC-UNEP project is led by Prof. Jia Li from State Key Laboratory of Remote Sensing Science, Aerospace Information Research Institute (AIR), Chinese Academy of Sciences (CAS).

The four [datasets](#) include: 30m land use and cover maps (1990–2020), NPP-VIIRS interannual night time light remote sensing dataset (2013–2020), long time series night time light remote sensing dataset (1992–2020) and surface water body extent and area dataset (2000–2020) for the Sahel-Sudano-Guinean region of Africa.

The land use/cover dataset (1990–2020) is a 30m land use and land cover classification product generated every five years from 1990 to 2020 and covers the region between 0° and 30°N in Africa. The overall accuracy of the dataset is about 75%, and the accuracy of change detection is higher than 70%. The [land use](#) and land cover data are in good agreement with the statistical data of UN Food and Agriculture Organization and delineate similar spatial pattern as other existing land cover maps. The dataset provides information to support sustainable use of land resources and environmental protection in the region.

The data on NPP-VIIRS annual night time light, covering the region between 0° and 20°N in Africa, achieved better quality in the Sahel-Sudano-Guinean region (2013–2020) than the initial NPP-VIIRS monthly average night light data by developing and applying the Patch Filtering Method (PFM), which can effectively distinguish urban stable night time light from unstable night time light caused by biomass burning and capture better information on [urban areas](#). To a certain extent, the dataset improves the ability to identify small-scale, scattered, and unstable urban lights in the region, and can be further applied to explore human activities.

In general, the intensity and spatial distribution of night time light obtained by satellite remote sensing provide useful information for the study of human activities. In the Sahel-Sudano-Guinean region; however, the study on spatio-temporal patterns and changes of human activities over a longer period of time is hindered by the lack of high quality, long-time series on night time light data. A median calibration method was developed to construct a long-term night time light dataset from 1992 to 2020 in this region by integrating and inter-calibrating the Defense Meteorological Satellite Program—Operational Linescan System (DMSP-OLS) night time light data (in digital number values) and NPP-VIIRS night time light data (in radiance). This dataset can be used to analyze temporal and spatial changes in human activities in the region.

The dataset on the surface water bodies in the Sahel-Sudano-Guinean region includes the extent and area of surface water bodies larger than 1 km<sup>2</sup> in 23 countries during 2000–2020. This dataset provides information upscaled from pixels to entire surface water bodies, which is of more practical significance in geospatial-analyses. The dataset will likely be useful to surface water resources assessment and other studies in the region.

Provided by Chinese Academy of Sciences

Citation: Datasets reveal impacts of land use and cover change on the Sahel-Sudano-Guinean region in Africa (2022, July 7) retrieved 25 April 2024 from

<https://phys.org/news/2022-07-datasets-reveal-impacts-sahel-sudano-guinean-region.html>

This document is subject to copyright. Apart from any fair dealing for the purpose of private study or research, no part may be reproduced without the written permission. The content is provided for information purposes only.