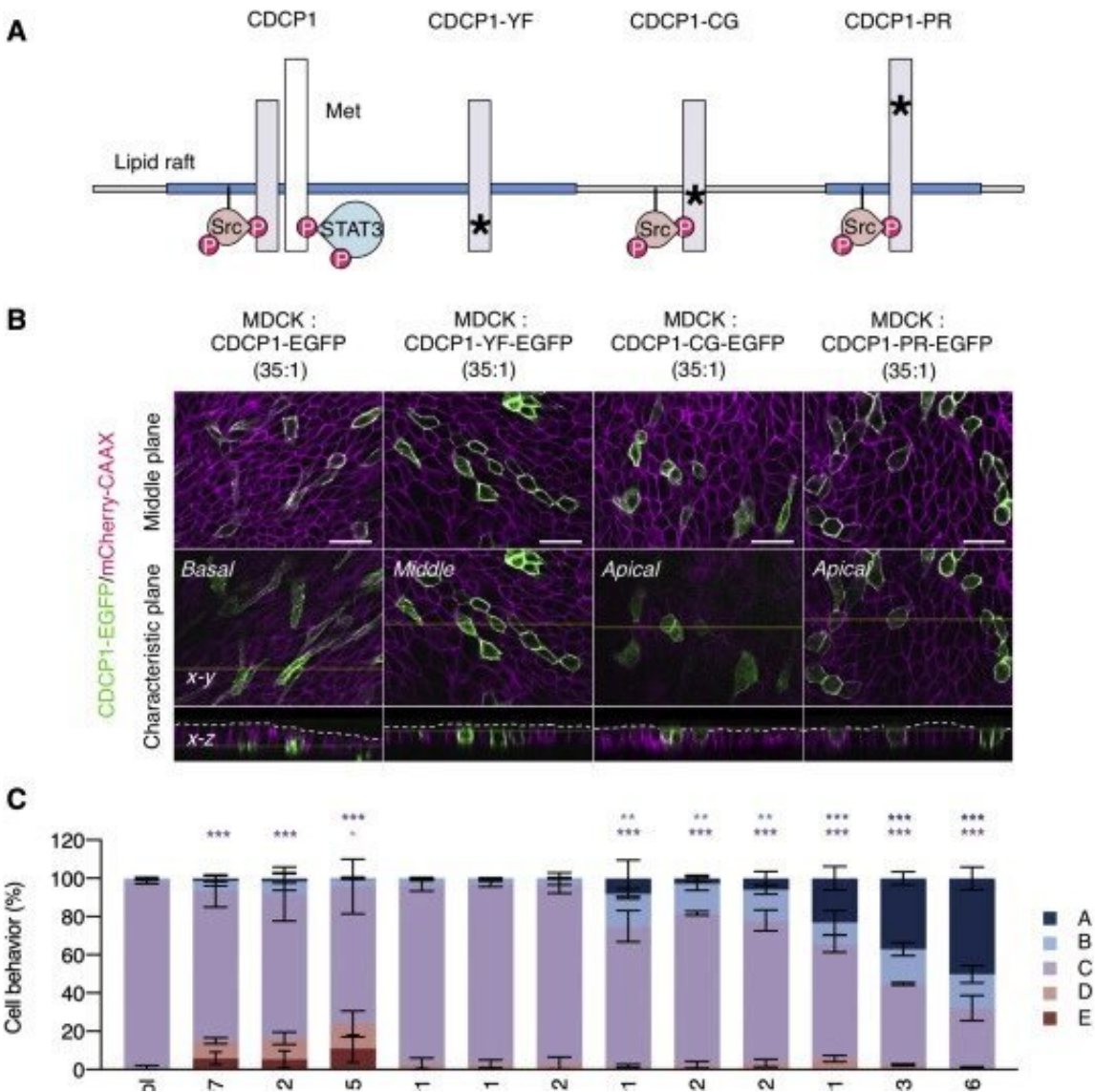


Breakthrough in study of how epithelial cells become cancerous

July 11 2022



CDCP1 induces basal delamination through Src activation within lipid rafts. (A) Schematic model of CDCP1 and its mutants. Blue squares indicate lipid raft domains, and asterisks indicate point mutations. (B and C) MDCK type I cells

harboring CDCP1-EGFP, CDCP1-YF-EGFP, CDCP1-CG-EGFP, or CDCP1-PR-EGFP were mixed with wild-type cells at a ratio of 35:1 and incubated with Dox for 24 h. Cell behavior was assessed using the criteria defined in Figure 1C, and representative results were shown. The mean ratios \pm SDs were obtained from three independent experiments. *p

Citation: Breakthrough in study of how epithelial cells become cancerous (2022, July 11)
retrieved 4 August 2024 from
<https://phys.org/news/2022-07-breakthrough-epithelial-cells-cancerous.html>

This document is subject to copyright. Apart from any fair dealing for the purpose of private study or research, no part may be reproduced without the written permission. The content is provided for information purposes only.