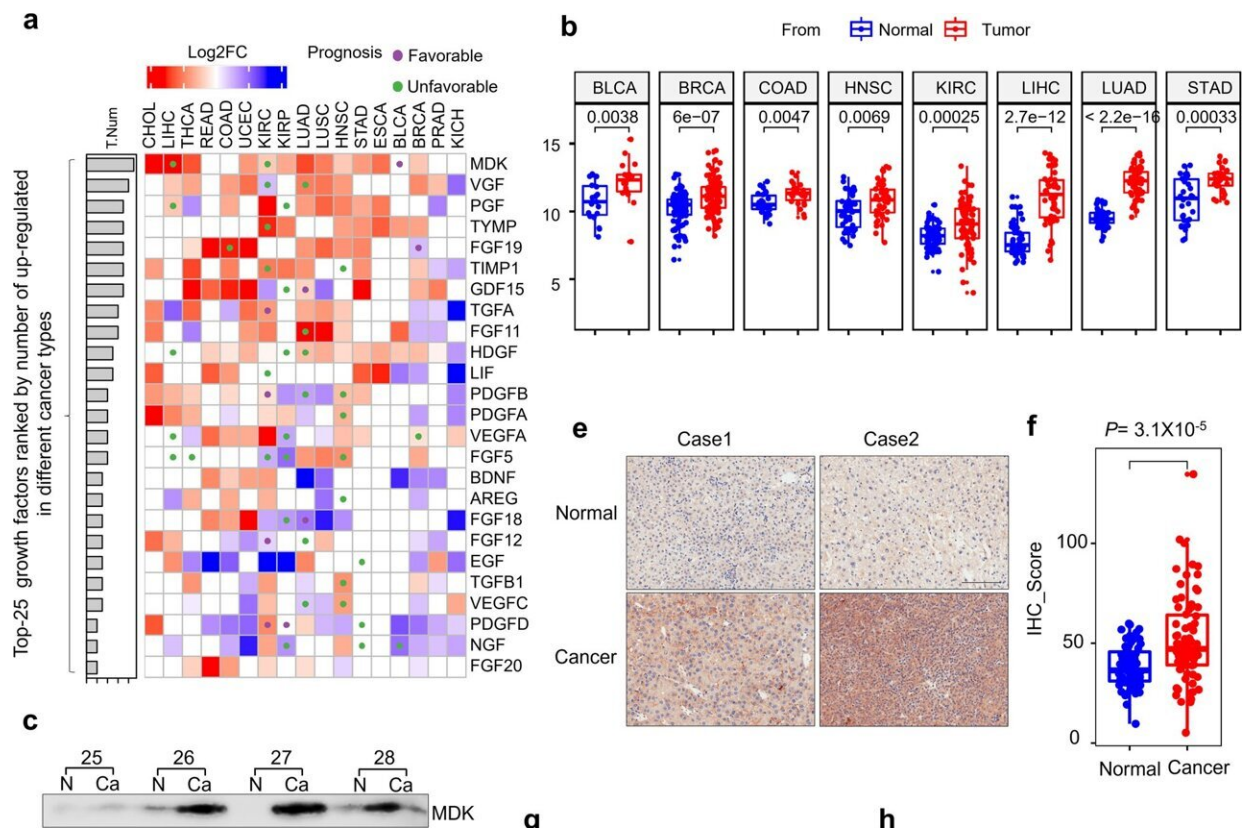


# How growth factor Midkine suppresses AMPK during cancer progression

May 12 2022, by Li Yuan



Midkine expression is upregulated in cancer. a Pan-cancer evaluation of the expression and prognostic impact of growth factors. The color of each rectangle represents the log2 transformed fold change (Log2FC) of the mRNA expression for the corresponding growth factor between tumor and normal tissues, and the white rectangles indicate either a Log2FC value equal 0 or differences between tumor and normal tissues that are not significant (linear model approach of limma,  $P > 0.01$ ). The purple and green circles represent high gene expression correlated with good and poor prognosis, respectively (log rank test,  $P$

Citation: How growth factor Midkine suppresses AMPK during cancer progression (2022, May 12) retrieved 18 June 2024 from <https://phys.org/news/2022-05-growth-factor-midkine-suppresses-ampk.html>

This document is subject to copyright. Apart from any fair dealing for the purpose of private study or research, no part may be reproduced without the written permission. The content is provided for information purposes only.