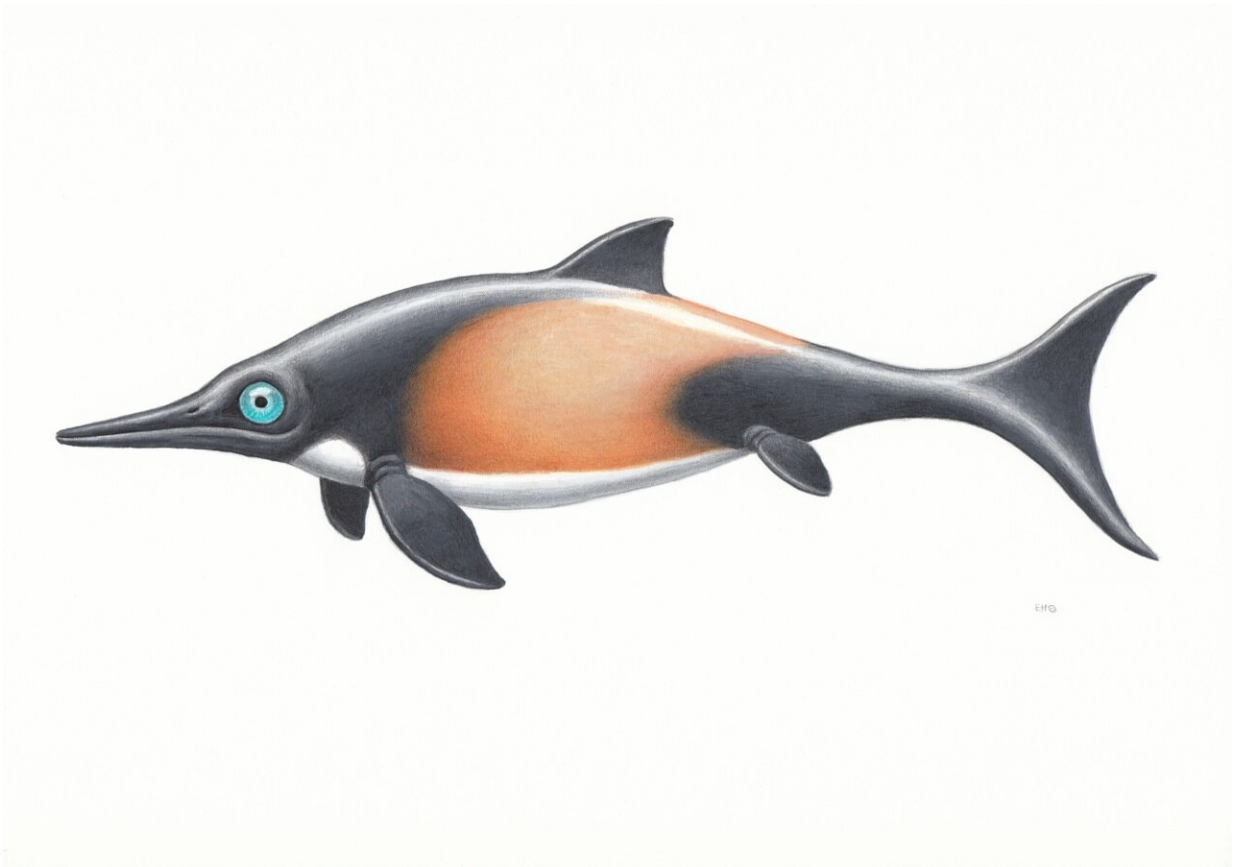


Fish-like marine reptile buried in its own blubber in southern Germany 150 million years ago

April 7 2022



Ichthyosaur ill Esther van Hulsen. Credit: Ichthyosaur ill Esther van Hulsen

A new study published in *PeerJ* uses modern methods to understand the

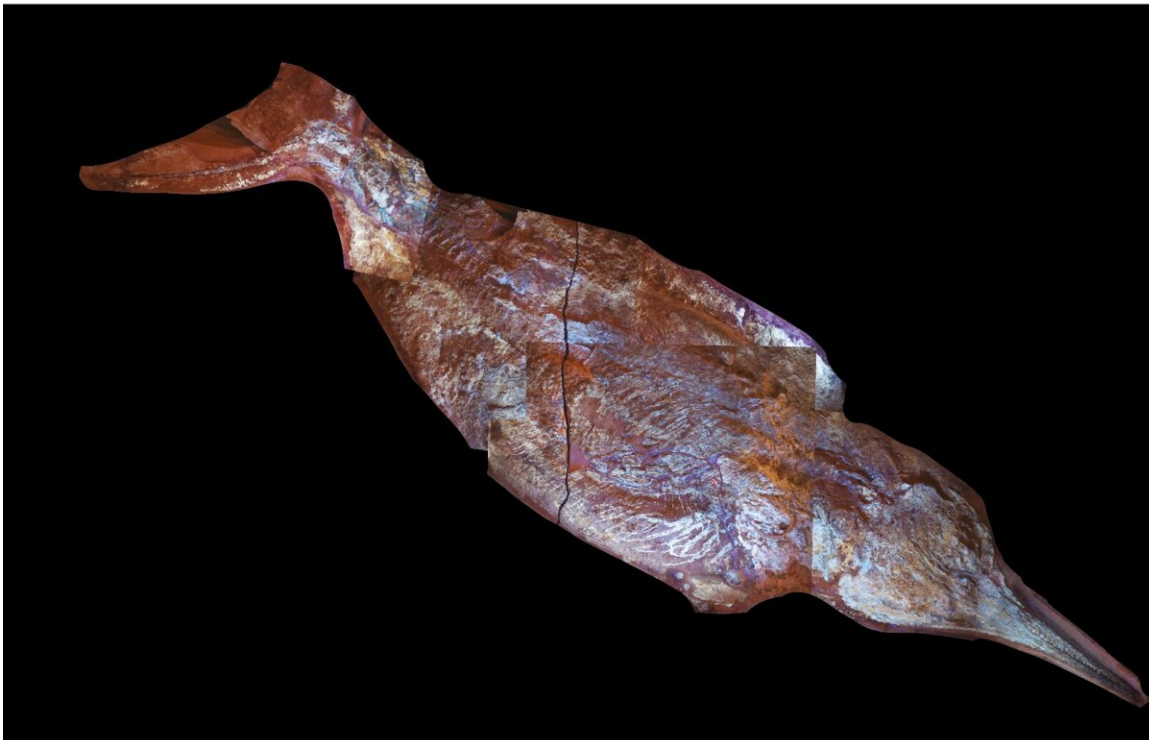
preservation of unique ichthyosaur fossils. Two new ichthyosaur specimens—one complete animal and one tail—are the first to preserve outer body shape in the last, large group of ichthyosaurs.

Ichthyosaurs were marine reptiles living in the age of dinosaurs. Their fossils are found all over the world, and they are famous for having a fish-like shape resembling today's dolphins.

The Solnhofen area in southern Germany is famous for its fossils from the Late Jurassic, which includes Archaeopteryx, usually recognized as the first bird, and numerous other animals, many of them preserved with [soft tissues](#) in addition to skeletons and teeth, which is rare in the fossil record.

The new peer-reviewed paper describes two [ichthyosaur](#) specimens from the Solnhofen area, approximately 150 million years old. They are housed in the Jura-Museum, owned by the Bishops Seminar Eichstätt. One ichthyosaur is a complete specimen, with the internal skeleton and an outline of the soft tissue around the body. The other is a complete tail fin. It is preserved with the tail vertebrae and the soft tissues around, confirming that ichthyosaurs also in this group had a moon-shaped tail, like their ancestors.

The research was carried out by a cross-disciplinary team of scientists. Lene Liebe Delsett, the lead author, and Jørn Hurum, have worked with marine reptiles for several years at the Natural History Museum in Oslo, Norway. Martina Kölbl-Ebert is a specialist on the Solnhofen area and its fauna. They worked with mineralogist Henrik Friis, who analyzed the soft tissue samples in order to see what it contained.



Large ichthyosaur in normal and UV light. Credit: Lene L Delsett

"The complete specimen is really what makes this project unique

because it tells a complete story. Ichthyosaurs are not common as fossils in Solnhofen, which at the time was a relatively shallow area with many islands, whereas ichthyosaurs were open ocean dwellers. We do not know why this one entered the lagoons, but it might be the reason why it died. Seeing the specimen makes an impact because it is so obviously a complete, dead animal body, where we can see its shape because of the unique preservation," Delsett says.

During or after death, the ichthyosaur landed on its back and side on the seafloor, and was covered in fine sediments. Little oxygen and quite a lot of luck preserved it until it was found and excavated in 2009. In the paper, the scientists do a first description of the specimen and start the process of understanding its soft tissue. In order to do so, they took small samples from the soft tissue in the tail and looked at it via X-ray crystallography and a scanning electron microscope. Because the skeletons and the rock they are preserved in, have almost the same color, UV light was used for studying the shape of the bones to understand which type of ichthyosaur these are. They found that phosphate found in the tissues of the ichthyosaurs likely contributed to the preservation. It is not yet possible to identify all of the fossilized tissue types in the ichthyosaur, but the new study confidently confirms the preservation of skin and possibly connective tissue. However, the major part of the matter that surrounds and covers the specimen is probably decomposed blubber.

"We know from earlier research that ichthyosaurs likely had a blubber, like whales have today. Our research confirms this, for a group of ichthyosaurs where this has not been certain. The blubber is another strong similarity between whales and ichthyosaurs, in addition to their body shape. In the future, I hope that these two ichthyosaurs from Solnhofen can be used to enhance our understanding of swimming, as they preserve tail and body shape," Delsett says.

More information: Lene L. Delsett et al, The soft tissue and skeletal anatomy of two Late Jurassic ichthyosaur specimens from the Solnhofen archipelago, *PeerJ* (2022). [DOI: 10.7717/peerj.13173](https://doi.org/10.7717/peerj.13173)

Provided by PeerJ

Citation: Fish-like marine reptile buried in its own blubber in southern Germany 150 million years ago (2022, April 7) retrieved 2 May 2024 from <https://phys.org/news/2022-04-fish-like-marine-reptile-blubber-southern.html>

<p>This document is subject to copyright. Apart from any fair dealing for the purpose of private study or research, no part may be reproduced without the written permission. The content is provided for information purposes only.</p>
--