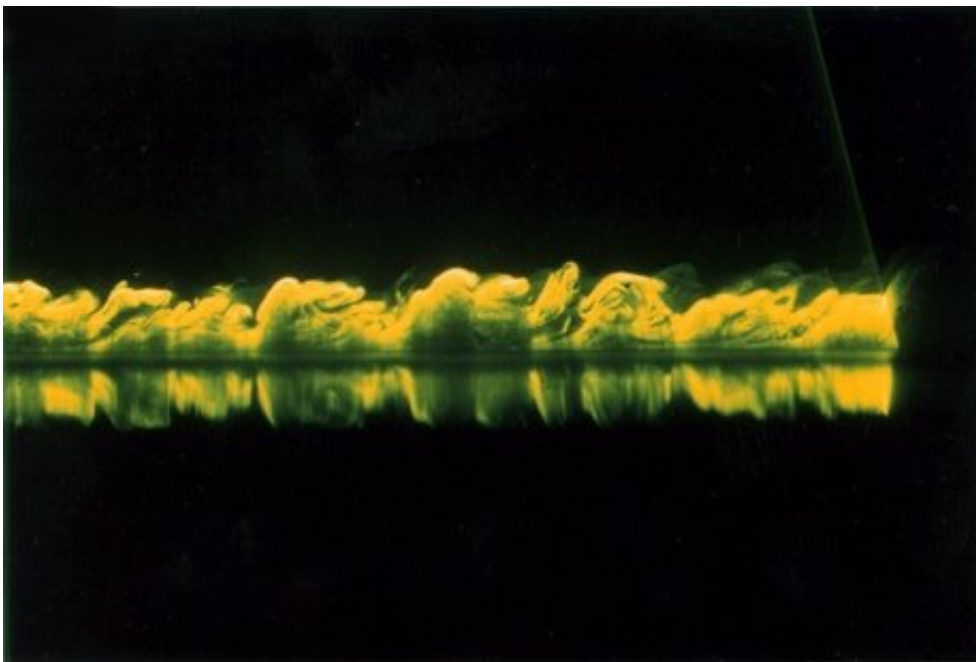


Mathematicians derive the formulas for boundary layer turbulence 100 years after the phenomenon was first formulated

November 16 2021, by Harrison Tasoff



Large eddies in a turbulent boundary layer. Credit: M. Gad-el-Hak

Turbulence makes many people uneasy or downright queasy. And it's given researchers a headache, too. Mathematicians have been trying for a century or more to understand the turbulence that arises when a flow interacts with a boundary, but a formulation has proven elusive.

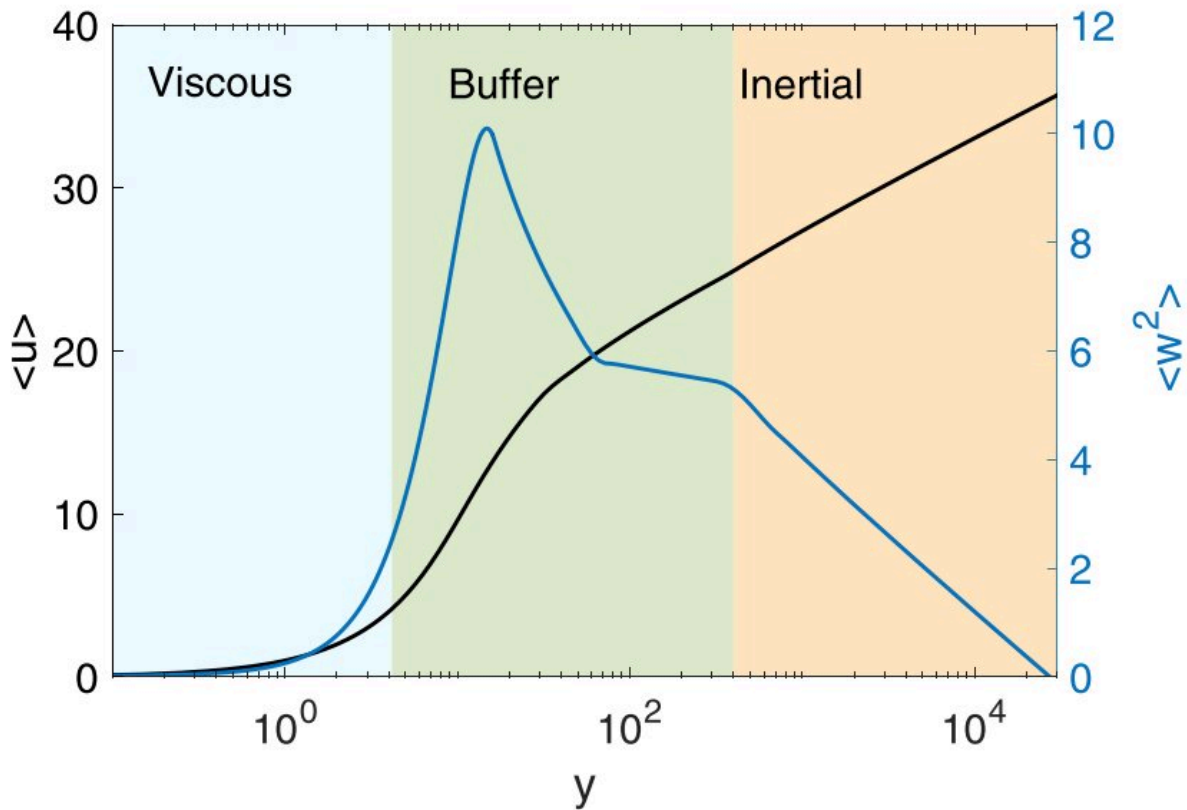
Now an international team of mathematicians, led by UC Santa Barbara

professor Björn Birnir and the University of Oslo professor Luiza Angheluta, has published a complete description of boundary [layer](#) turbulence. The paper appears in *Physical Review Research*, and synthesizes decades of work on the topic. The theory unites empirical observations with the Navier-Stokes equation—the mathematical foundation of [fluid](#) dynamics—into a [mathematical formula](#).

This phenomenon was first described around 1920 by Hungarian physicist Theodore von Kármán and German physicist Ludwig Prandtl, two luminaries in fluid dynamics. "They were honing in on what's called boundary layer turbulence," said Birnir, director of the Center for Complex and Nonlinear Science. This is turbulence caused when a flow interacts with a boundary, such as the fluid's surface, a pipe wall, the surface of the Earth and so forth.

Prandtl figured out experimentally that he could divide the boundary layer into four distinct regions based on proximity to the boundary. The viscous layer forms right next to the boundary, where turbulence is damped by the thickness of the flow. Next comes a transitional buffer region, followed by the inertial region, where turbulence is most fully developed. Finally, there is the wake, where the boundary layer flow is least affected by the boundary, according to a formula by von Kármán.

The fluid flows quicker farther from the boundary, but its velocity changes in a very specific manner. Its average velocity increases in the viscous and buffer layers and then transitions to a logarithmic function in the inertial layer. This "log law," found by Prandtl and von Kármán, has perplexed researchers, who worked to understand where it came from and how to describe it.



The mean velocity curve (black) and variance (blue) of a fluid in different parts of the boundary layer. Credit: Birnir et al

The flow's variation—or deviation from the mean velocity—also displayed peculiar behavior across the boundary layer. Researchers sought to understand these two variables and derive formulas that could describe them.

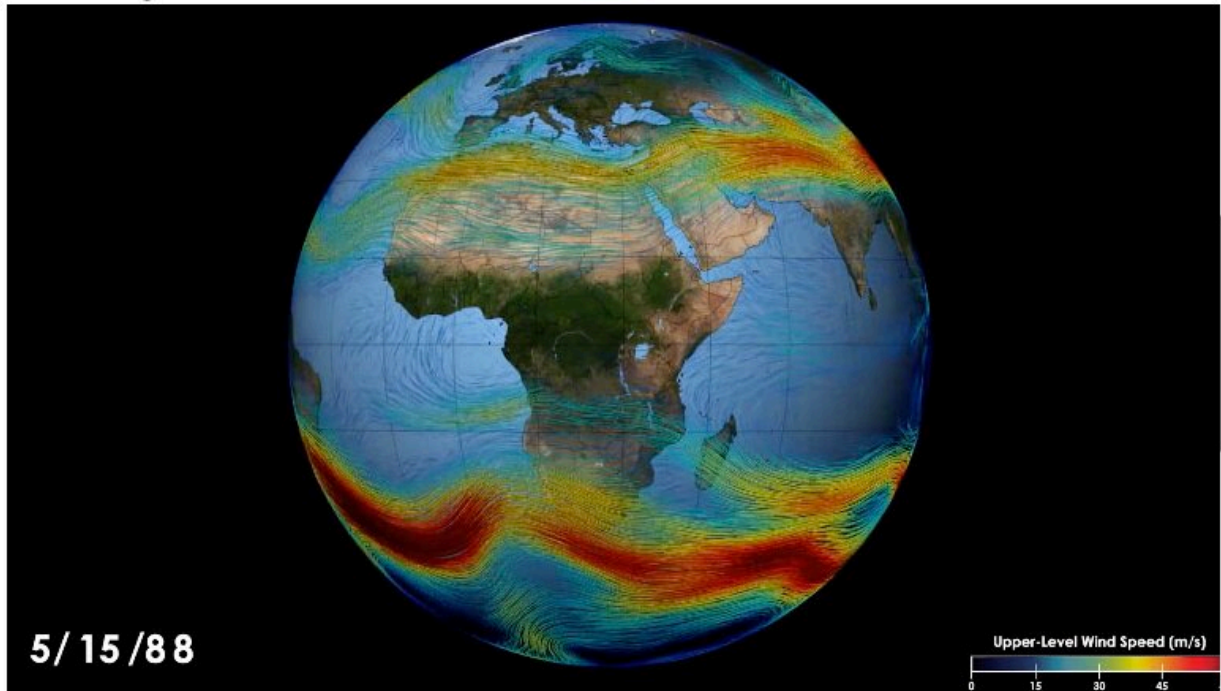
In the 1970s, Australian mechanical engineer Albert Alan Townsend suggested that the shape of the mean velocity curve was influenced by eddies attached to the boundary. If true, it could explain the odd shape the curve takes through the different layers, as well as the physics behind

the log law, Birnir said.

Fast forward to 2010, and mathematicians at the University of Illinois released a [formal description](#) of these attached eddies, including formulas. The study also described how these eddies could transfer energy away from the boundary toward the rest of the fluid. "There's a whole hierarchy of eddies," Birnir said. The smaller eddies give energy to the larger ones that reach all the way into the inertial layer, which helps explain the log law.

However, there are also detached eddies, which can travel within the fluid, and these also play an important role in boundary layer turbulence. Birnir and his co-authors focused on deriving a formal description of these. "What we showed in this paper is that you need to include these detached eddies in the theory as well in order to get the exact shape of the mean velocity curve," he said.

Their team combined all these insights to derive the mathematical formulation of the mean velocity and variation that Prandtl and von Kármán first wrote about some 100 years earlier. They then compared their formulas to computer simulations and experimental data, validating their results.



A better understanding of boundary turbulence could shed light on Earth's jet streams. Credit: NASA

"Finally, there was a complete analytical model that explained the system," Birnir said. With this new mathematical formulation, scientists and engineers can adjust different parameters to predict the behavior of a fluid.

And [boundary layer](#) turbulence appears in all sorts of fields, from transportation to meteorology and beyond. "I think it's going to have a lot of applications," Birnir remarked. For instance, a proper understanding of boundary turbulence can help make more efficient engines, reduce pollutants and minimize drag on all sorts of vehicles.

Earth's atmosphere can be modeled as a boundary flow. Despite its apparent height, the atmosphere is essentially a thin shell of moving air

hugging the planet's surface. "I think, ultimately, we will be able to use this theory to understand both atmospheric turbulence and the jet stream," Birnir said. "It's going to be quite useful."

The authors were surprised to discover how important detached eddies were, especially in explaining the turbulence transition in the buffer layer. Studying their behavior has begun to provide insight into other types of turbulence.

"In particular, we get insights into Lagrangian turbulence," said Birnir, referencing the theory that describes turbulent behavior in a reference frame that moves with the flow, like a raft on a river. This contrasts with Eulerian turbulence theory, which describes the fluid as it moves past a fixed reference frame, like a pier on the riverbank. Attached eddies disappear in the moving reference frame—much like a current seems to disappear when you're headed downstream. "But the detached [eddies](#) are still there," Birnir said, "and they seem to play a major role in Lagrangian turbulence."

The team is currently focused on exploring Lagrangian turbulence with these new tools, which themselves originally came from work on homogenous [turbulence](#), where there is no boundary. "Insights that you get in one field help you in another," Birnir observed.

More information: Björn Birnir et al, Spectral link of the generalized Townsend-Perry constants in turbulent boundary layers, *Physical Review Research* (2021). [DOI: 10.1103/PhysRevResearch.3.043054](https://doi.org/10.1103/PhysRevResearch.3.043054)

Provided by University of California - Santa Barbara

Citation: Mathematicians derive the formulas for boundary layer turbulence 100 years after the

phenomenon was first formulated (2021, November 16) retrieved 11 May 2024 from <https://phys.org/news/2021-11-mathematicians-derive-formulas-boundary-layer.html>

This document is subject to copyright. Apart from any fair dealing for the purpose of private study or research, no part may be reproduced without the written permission. The content is provided for information purposes only.