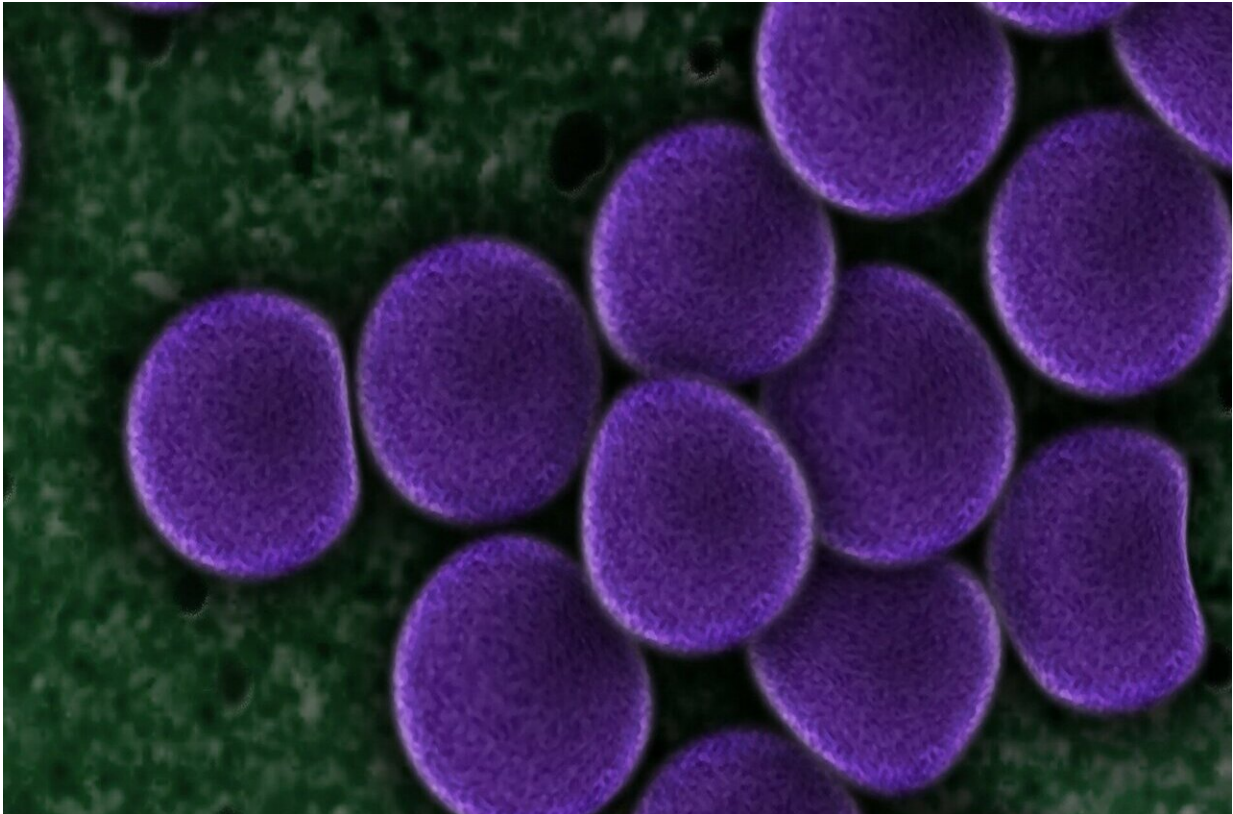


# Guiding microbes along their path

September 24 2021

---



Credit: CC0 Public Domain

The interdisciplinary field of active matter physics investigates the principles behind the behavior and self-organization of living organisms. The goal is to reveal general principles that allow to describe and predict the performance of living matter and thereby support the development of novel technologies. Recently, the groups of Oliver Bäumchen and

Marco Mazza from the MPIDS, the University of Bayreuth and the University of Loughborough in the UK published their results on the model describing microbial navigation.

"As [microbes](#) are often challenged with navigating through confined spaces, we were asking ourselves if there is a pattern behind the microbial navigation in a defined compartment", they explain the approach. To answer this question, the researchers followed a single motile microbe and experimentally determined the probability flux of its movements. That is to say, they subdivided an predefined compartment into sectors and determined the probability of [movement](#) direction for each sector. In this way, a map was created according to which the navigation behavior of the microbe can be predicted.

## **The curvature determines the flux**

Surprisingly, the microbe was found not to move randomly though the open space. Instead, the average movement pattern was both highly organized and symmetrical: the map of movement patterns showed a defined distribution of probability fluxes. "In particular, the strength of the flux was found to depend on the curvature of the adjacent solid interface: a higher degree of curvature resulted in a stronger flux" explain Jan Cammann and Fabian Schwarzendahl, the lead authors of the study.

For practical reasons, all measurements were done in a quasi 2-dimensional environment, meaning that the microbe was confined from the top and bottom to better monitor its movement and avoid defocusing. Observing its movement pattern, the group of Marco Mazza (University of Loughborough and MPIDS) created a [model](#) to predicts the probabilities to flow in a certain direction. This model was then applied to compartments with more complex interface curvatures and experimentally verified by the lab of Oliver Bäümchen (MPIDS and

University of Bayreuth). "It turns out that the curvature of the interface is the dominating factor which directly determines the flux of the self-propelling microbe.", Bäumchen summarizes.

## **A technological implication for the future**

As this discovery constitutes a fundamental observation, the model might as well be applied to other areas of active matter physics. "With our model, we can basically statistically predict where the object of interest will be in the next moment", Mazza reports. "This could not only significantly improve our understanding of the organization of life, but also help to engineer technical devices."

Understanding the principles behind the organization of active matter therefore can have direct implications on our future technologies. Potential applications of the model could be directing the movement of photosynthetic microorganisms in such a way so their [flux](#) can propel a generator, which would be a direct way to convert sunlight into mechanical energy. But also, in the pharmaceutical and healthcare sector, the findings of the scientists might be applied: "A potential application in the medical sector is the development of micro-robots delivering drugs to their specific destination in an efficient manner", Bäumchen concludes.

The research was published in *Proceedings of the National Academy of Sciences*.

**More information:** Jan Cammann et al, Emergent probability fluxes in confined microbial navigation, *Proceedings of the National Academy of Sciences* (2021). [DOI: 10.1073/pnas.2024752118](https://doi.org/10.1073/pnas.2024752118)

Provided by Max Planck Institute for Dynamics and Self-Organization

Citation: Guiding microbes along their path (2021, September 24) retrieved 3 May 2024 from <https://phys.org/news/2021-09-microbes-path.html>

This document is subject to copyright. Apart from any fair dealing for the purpose of private study or research, no part may be reproduced without the written permission. The content is provided for information purposes only.