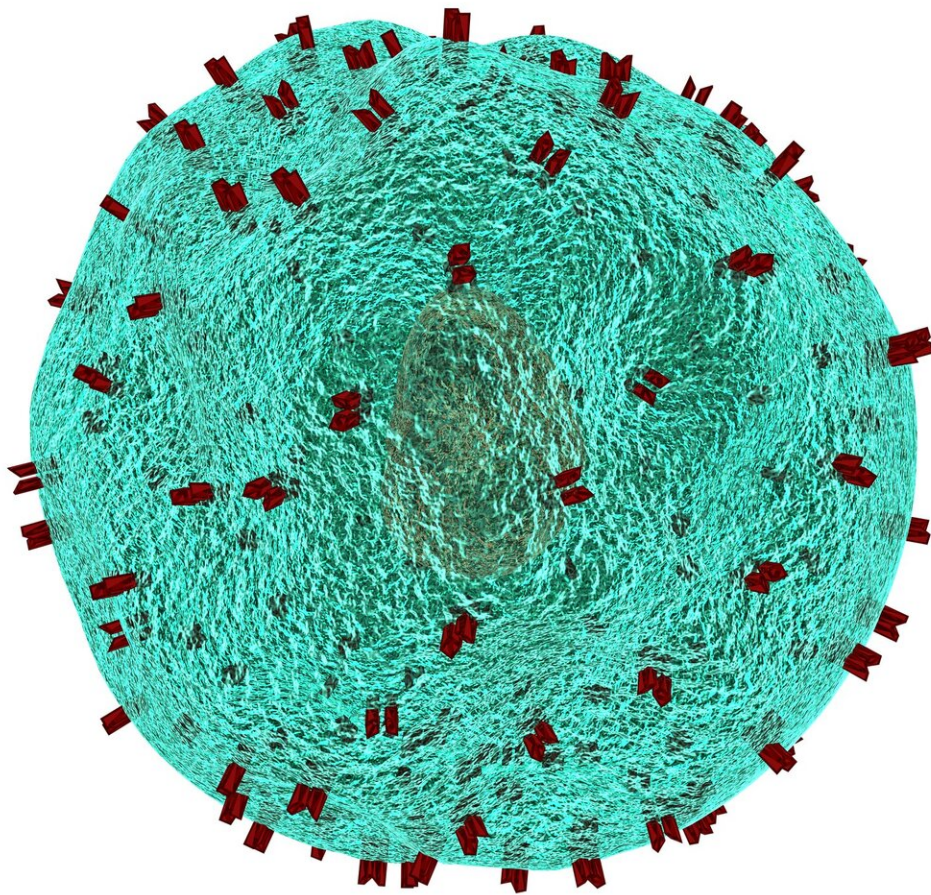


Novel fluorescence imaging assay gives new insight to develop biomimetic nanoparticles for targeted cancer therapy

September 30 2021



Credit: CC0 Public Domain

Cell membrane coated biomimetic nanoparticles (NPs) have been widely studied in nanomedicine because of their unique properties such as immune escaping, long blood circulation, specific molecular recognition and efficient cancer targeting, indicating a great potential in targeted cancer therapy. However, the integrity of the cell membrane coating on NPs, a key metrics related to the quality of these biomimetic-systems and to the resulting biomedical function, has remained largely unexplored. In the present study, the researchers developed a fluorescence quenching assay to probe the integrity of the cell membrane coating.

The study published in *Nature Communications* shows that the great majority of the cell membrane coated NPs were only partially coated when the traditional [coating](#) techniques were applied. The information is essential as the coating degree impacts the biological fate of NPs. The research was carried out at the University of Eastern Finland, Department of Applied Physics, in Professor Vesa-Pekka Lehto's research group.

"The present methods for characterizing the cell membrane coating are only qualitative and fail to statistically evaluate the degree and variability of the coating," says Lizhi Liu, the first author of the publication. "When we applied the developed quantification method to evaluate the success of the commonly used protocols to produce fully coated NPs, we found that the fraction never exceeded 20 percent."

"Our discovery is a big surprise to whole scientific community in

nanomedicine because it has been generally accepted that the cell membrane coating is perfect. Despite of the partial coating, biomimetic NPs could still be internalized by the [target cells](#) via different pathways," says Dr. Wujun Xu, one of the corresponding authors of the paper. To explain this, the authors proposed a new endocytic entry mechanism for these partially coated NPs by computational simulations. Specifically, the NPs with a high coating degree (≥ 50 percent) entered the [cells](#) individually, whereas the NPs with a low coating degree (

"The present [study](#) highlights some of the limitations of the current [cell membrane](#) coating protocols and motivates the efforts to improve the protocols. The developed quantification method is a practical tool to assess the success of these efforts and establish a standard for comparing the different coating designs," says Professor Vesa-Pekka Lehto.

More information: Lizhi Liu et al, Cell membrane coating integrity affects the internalization mechanism of biomimetic nanoparticles, *Nature Communications* (2021). [DOI: 10.1038/s41467-021-26052-x](https://doi.org/10.1038/s41467-021-26052-x)

Provided by University of Eastern Finland

Citation: Novel fluorescence imaging assay gives new insight to develop biomimetic nanoparticles for targeted cancer therapy (2021, September 30) retrieved 2 July 2024 from <https://phys.org/news/2021-09-fluorescence-imaging-assay-insight-biomimetic.html>

<p>This document is subject to copyright. Apart from any fair dealing for the purpose of private study or research, no part may be reproduced without the written permission. The content is provided for information purposes only.</p>
--