

New research may help scientists grow more complex and mature heart tissue in the lab

August 19 2021

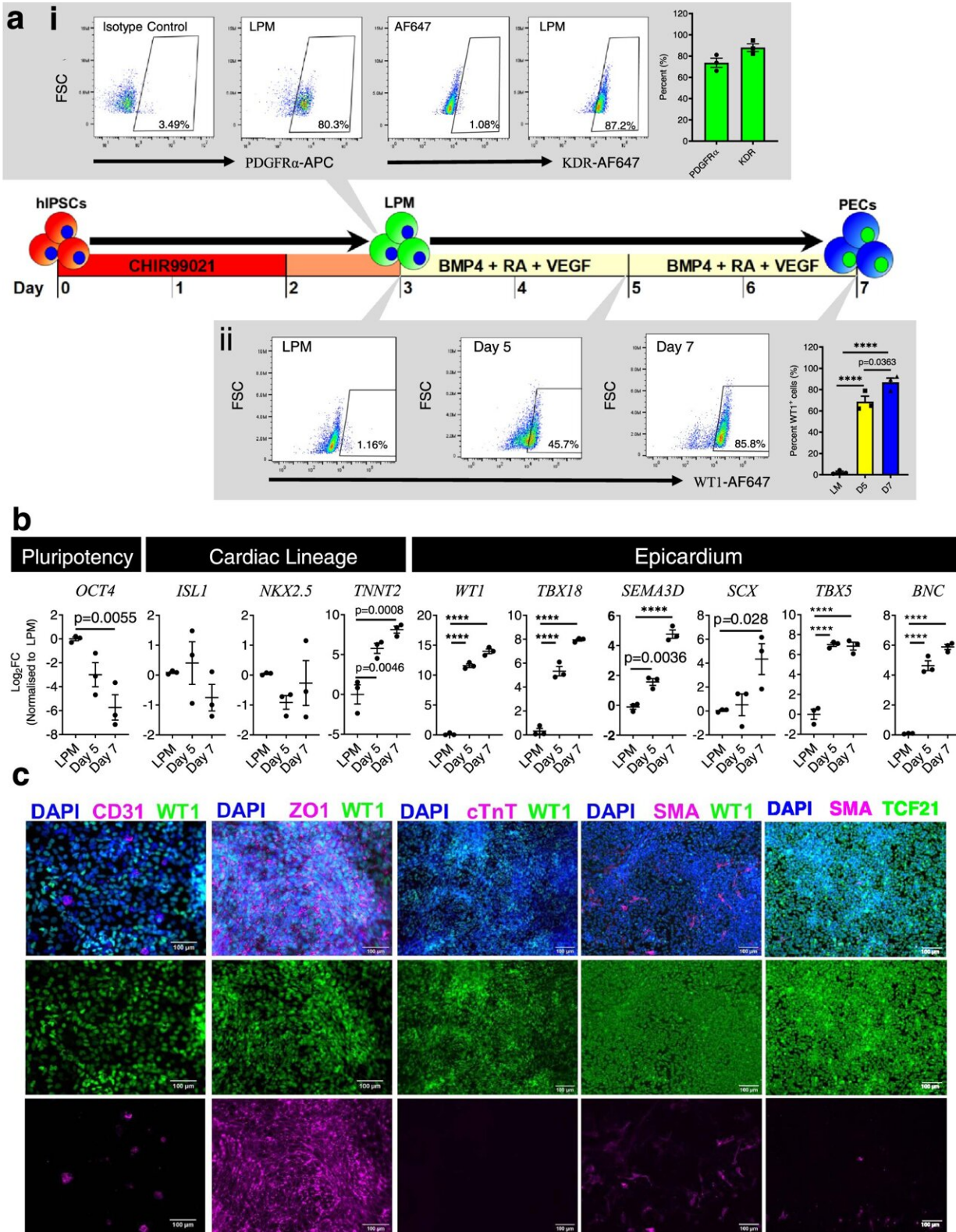


Fig. 1: Generation of CMs and PECs from BJ-RiPS cells. a Schematic shows

timeline of CHIR treatment to generate LPM and PECs from hiPSCs. ai FACS dotplots show PDGFRA and KDR expressions in LPM at day 3. Bar graph shows mean \pm SEM of analyzed from three independent experiments by flow cytometry. aii Representative flow cytometric dot plot of WT1 expression in differentiating PECs at day 3 (LPM), day 5 and day 7. Bar graph represents the percent of WT1 at day 3 (LPM), day 5 (yellow) and day 7 (blue) of differentiation. The significant differences between groups and p values were determined by one-way ANOVA with Tukey's multiple comparisons test. *p

Citation: New research may help scientists grow more complex and mature heart tissue in the lab (2021, August 19) retrieved 24 April 2024 from <https://phys.org/news/2021-08-scientists-complex-mature-heart-tissue.html>

This document is subject to copyright. Apart from any fair dealing for the purpose of private study or research, no part may be reproduced without the written permission. The content is provided for information purposes only.