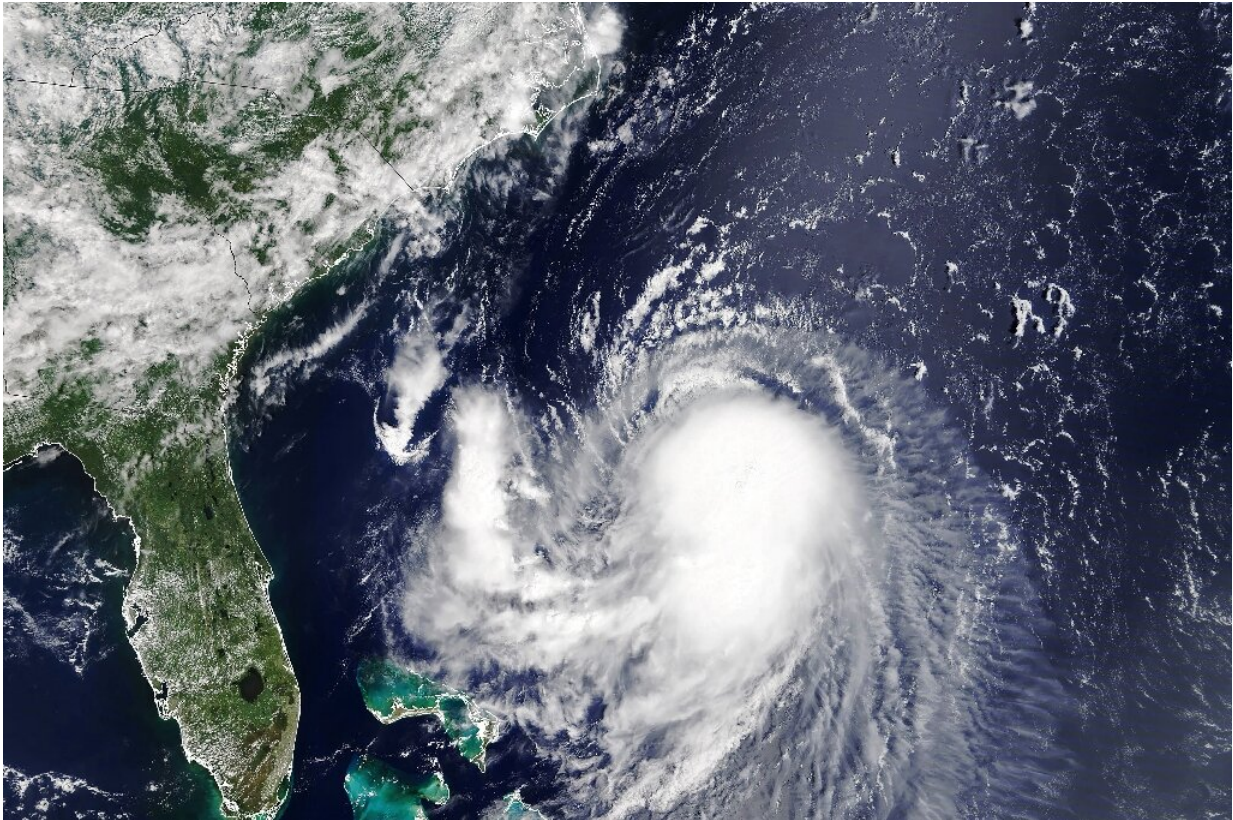


# Hurricane Henri bears down on US east coast

August 22 2021

---



In this handout satellite image courtesy of NASA Earth Observatory taken at 11:45 am US Eastern Time (15:45 UT) on August 20, 2021, Henri is seen moving toward the northeast US Coast.

Hurricane Henri was on course to make landfall on the US east coast Sunday, with millions in New England and New York's Long Island preparing for flash flooding, violent winds and power outages.

A swath of the northeastern coastline, including New York City, was under alert late Saturday as [storm](#) Henri was upgraded to what could be the first hurricane to hit New England in 30 years.

The US National Hurricane Center said in its 5 am (1700 GMT) advisory that Henri was approaching eastern Long Island and southern New England, and 80 miles (128 kilometers) southeast of Montauk Point in New York state.

Forecasters warned of [heavy rainfall](#) and the risk of surging seas as the storm churned in the Atlantic, packing maximum sustained winds near 75 miles (120 kilometers) per hour.

Nasty weather that preceded Henri forced New York City to halt a star-studded Central Park concert billed as a "homecoming" for a metropolis hard hit by the pandemic.

The approaching hurricane had prompted New York Governor Andrew Cuomo to announce a state of emergency and the deployment of 500 National Guard soldiers in anticipation of response efforts.

"It's as serious as a heart attack," he warned.

He said the storm was expected to make landfall on Long Island, home to the plush Hamptons villages where wealthy New Yorkers retreat in summer, around noon (1600 GMT) on Sunday.



Homes were boarded up in Connecticut as Hurricane Henri steams towards the US east coast.

"It will be about a 26-hour event," Cuomo added, telling New Yorkers to expect "significant power outages" and "significant flooding" in some suburbs of the Big Apple.

Henri was anticipated to miss New York City by miles, but could still cause tropical storm conditions beginning Saturday night.

Some of that weather rolled in during the concert in Central Park, where an announcer cut off pop legend Barry Manilow mid-song to urge revelers to proceed swiftly but calmly to the nearest exit.

"I guess for safety it makes sense. I mean I can hear the thunder," said attendee Maria Fuentes.

## 'Begin storm preparations'

The NHC warned of "a dangerous storm surge, hurricane conditions and flooding" in areas of southern New England and Long Island.

The National Weather Service said late Saturday Henri was expected to remain a Category 1 hurricane at landfall.



Attendees of the "We Love NYC: The Homecoming Concert" were ushered out after the event was canceled due to severe weather warnings in Central Park.

Henri is expected to produce three to six inches of rain (7.5 to 15 centimeters) across the region, with isolated maximum totals near 10 inches, the NHC warned.

The heavy rainfall "may result in considerable flash, urban, and small stream flooding" as well as river flooding, it added.

Extreme weather events are becoming more frequent as temperatures rise.

Officials in New England—which includes Connecticut, Maine, Massachusetts, New Hampshire, Rhode Island and Vermont—have warned people to get ready.

"All residents are advised to begin storm preparations today, and to pay close attention to local weather," the office of Massachusetts Governor Charlie Baker said Friday.

His state, which will close parks and beaches from Saturday to Monday, was bracing for the high winds to knock out electricity for up to 300,000 people, the governor's office said.

If Henri stays on its current course and maintains strength, it would be the first hurricane to directly hit New England in 30 years.



Members of the Edelweiss construction crew worked fast to protect costal homes by barricading their windows and doors with plywood sheets before Hurricane Henri hits the beach front area in New London, Connecticut.

"The last hurricane to make landfall onto New England was Hurricane Bob in 1991," Dennis Feltgen, an NHC spokesman, told AFP. That storm killed at least 17 people.

It has been almost a decade since such severe weather threatened the region.

"The last time we had hurricane watches issued for the area was for Hurricane Irene, back in late August of 2011," tweeted the National Weather Service in New York City.

The last [hurricane](#) to make landfall in Long Island was Gloria in 1985.

New York beaches were ordered closed for swimming Sunday and Monday as officials warned of high winds and possible storm surges, as well as flash flooding on roads.

The warnings have reignited memories of Hurricane Sandy, a more powerful storm that knocked out power for much of Manhattan and flooded subways in 2012.

© 2021 AFP

Citation: Hurricane Henri bears down on US east coast (2021, August 22) retrieved 6 May 2024 from <https://phys.org/news/2021-08-hurricane-henri-east-coast.html>

This document is subject to copyright. Apart from any fair dealing for the purpose of private study or research, no part may be reproduced without the written permission. The content is provided for information purposes only.