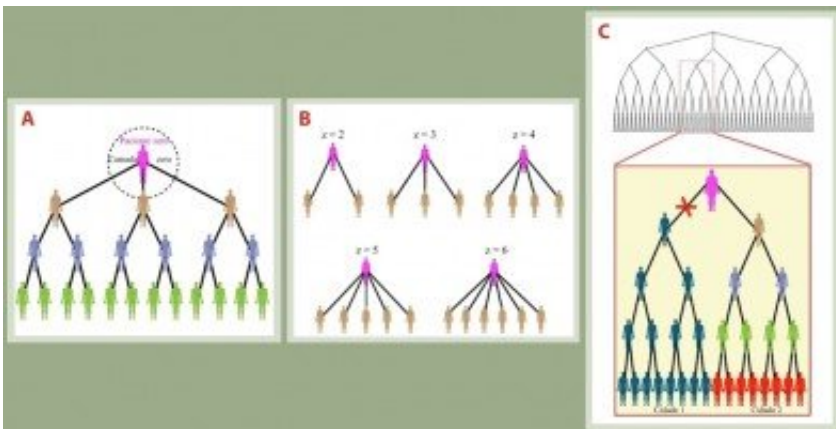


Concepts from physics explain importance of quarantine to control spread of COVID-19

June 23 2021, by José Tadeu Arantes



Coronavirus transmission diagram based on Bethe lattice. Panel a: patient zero can infect three people, each of whom can infect two others. Panel b: patient zero can infect two people ($z = 2$), three people ($z = 3$), and so on. Panel c: quarantine/social distancing stops the disease from spreading. Credit: Agência FAPESP

Mathematical models that describe the physical behavior of magnetic materials can also be used to describe the spread of the novel coronavirus that causes COVID-19.

This is the conclusion of a study conducted in Brazil by researchers affiliated with São Paulo State University (UNESP) in Rio Claro and Ilha Solteira and reported in an article published in *Physica A: Statistical Mechanics and its Applications*.

The study was part of a project led by Mariano de Souza, a professor at UNESP's Rio Claro Physics Department, and of the Ph.D. research of Isys Mello, whose thesis advisor is Souza, last author of the article. Another co-author is Antonio Seridonio, a professor at UNESP's Ilha Solteira Physics and Chemistry Department.

The central idea of the study was an analogy between concepts in magnetism and epidemiology in which electron interaction is compared with interaction among people. "We used the Ising model, widely used in several areas of physics, to demonstrate the importance of social distancing and isolation in reducing the rate at which the [virus](#) spreads," Souza told Agência FAPESP.

The magnetic behavior intrinsic to electrons is associated with spin. Simply put, spin can be imagined as a tiny magnet "pointing up" toward the sky or "down" to the ground, so that an electron may spin up or spin down. Spins may interact, depending on the material, and this interaction is quantified in terms of exchange energy.

"We imagined that [infected people](#) were 'spin-up' and non-infected people were 'spin-down.' We considered contact between an infected person and a non-infected person analogous to energy exchange in magnetism," Souza explained.

Using other more complex concepts from physics such as the Bethe lattice and percolation theory, the group demonstrated the key role played by social distancing and quarantine in mitigating transmission of the virus.

"We considered that all those who come into contact with each other form a network, and that contact between infected and non-infected people is likely to spread the virus. For example, imagine the first infected person [patient zero] is in contact with other people and fails to

take proper precautions [social distancing, face covering, hand hygiene etc]. The members of this group who are infected by the virus may transmit it to relatives, friends and other contacts, and these, in turn, may spread it to others, forming a 'contact network' that corresponds to a Bethe lattice in condensed matter [physics](#)," Souza said.

"If patient zero had taken all the necessary precautions, they would have avoided transmitting the virus to all these people who were indirectly infected by them," he added.

More information: Isys F. Mello et al, Epidemics, the Ising-model and percolation theory: A comprehensive review focused on Covid-19, *Physica A: Statistical Mechanics and its Applications* (2021). [DOI: 10.1016/j.physa.2021.125963](#)

Provided by FAPESP

Citation: Concepts from physics explain importance of quarantine to control spread of COVID-19 (2021, June 23) retrieved 2 July 2024 from <https://phys.org/news/2021-06-concepts-physics-importance-quarantine-covid-.html>

<p>This document is subject to copyright. Apart from any fair dealing for the purpose of private study or research, no part may be reproduced without the written permission. The content is provided for information purposes only.</p>
--