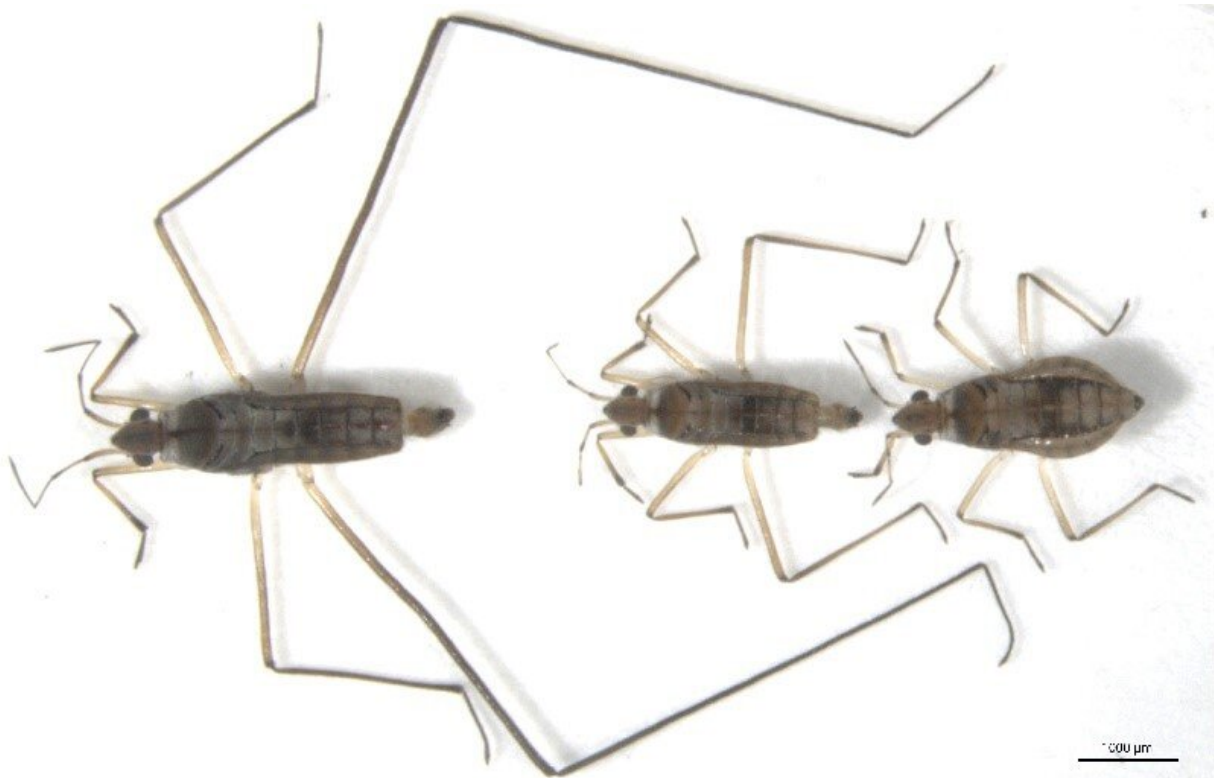


# Same gene drives male water striders' long legs and the inclination to use them as weapons

May 12 2021



A large male, a small male and a female Credit: Abderrahman Khila

Some water strider males (*Microvelia longipes*) have enormous back legs relative to the rest of their body, which they use to guard egg-laying sites and to fight off rival males. William Toubiana, Abderrahman Khila and

colleagues from the Universite de Lyon in France report that the development of this exaggerated male sexual characteristic depends on the production of a ubiquitous growth factor, BMP11, also found in humans and mice. The study was published on May 11, 2021 in the open-access journal *PLOS Biology*.

The water striders' elongated third pair of legs are a classic example of hyperallometry, where the size of one body part grows disproportionately to the rest. The researchers used a combination of transcriptome sequencing, real-time PCR, and RNA interference (RNAi) to investigate its genetic underpinnings. They found striking differences in [gene activity](#) between the front, middle, and back legs, and between the equivalent legs of males and females. In RNAi "knock-down" experiments on 30 [candidate genes](#), the loss of BMP11 function reduced the relative size of males' back legs. But these BMP11 knock-down males were also smaller, on average, and in behavioral experiments they showed less aggression and avoided fights with other males.

A second candidate, the Hox gene Ultrabithorax, which normally helps to determine differences between body segments, was also more highly active in male striders' back legs; however, knocking out its function reduced the relative size of the back legs without correlated reductions in average body size or behavior. This demonstrates that both genetically linked and unlinked traits can act as the basis for hyperallometry to evolve. The coupled effects of BMP11 on long-leggedness, [body](#) size, and aggression could be a behavioral adaptation, in which smaller-legged males chose to avoid conflicts they are unlikely to win; alternatively, BMP11 might have additional effects on nervous system development, the authors say.



A large male monopolizing a prey (fly) Credit: Abderrahman Khila

Dr. Abderrahman Khila notes, "Discovering that a conserved gene, such as BMP11, was involved in the hyper-allometry of male third legs was quite interesting, but what was really exciting to us is to realize that [males](#) with reduced activity of BMP11 become so passive in."

Dr., William Toubiana states, "That multiple traits that combined, increase fitness, could evolve in a correlated manner under the influence of a limited number of [genes](#) indicates that pleiotropy can promote the evolution of sexual dimorphism and exaggerated sexually selected traits. One very important aspect of traits such as male leg size is the extreme variation in growth we observe between individuals of the same population. Among our future plans is to understand how this growth

variation is mediated through the intricate interaction between genetics (DNA polymorphism), epigenetics, and nutrition. *Microvelia longipes* offers a unique opportunity to understand this interaction, and therefore, the complex genotype-phenotype map."

**More information:** William Toubiana et al, The growth factor BMP11 is required for the development and evolution of a male exaggerated weapon and its associated fighting behavior in a water strider, *PLOS Biology* (2021). [DOI: 10.1371/journal.pbio.3001157](https://doi.org/10.1371/journal.pbio.3001157)

Provided by Public Library of Science

Citation: Same gene drives male water striders' long legs and the inclination to use them as weapons (2021, May 12) retrieved 17 May 2024 from <https://phys.org/news/2021-05-gene-male-striders-legs-inclination.html>

This document is subject to copyright. Apart from any fair dealing for the purpose of private study or research, no part may be reproduced without the written permission. The content is provided for information purposes only.
---