

# 1 dead, 100,000 displaced as typhoon blows near Philippines

April 19 2021, by Jim Gomez

---



In this photo provided by the San Policarpo Firestation, firemen and police push up a steel fence as they clear roads during rain caused by Typhoon Surigae in the municipality of San Policarpo, Eastern Samar, eastern Philippines on Sunday April 18, 2021. An approaching typhoon has left at least one person dead, another missing and prompted the evacuation of more than 100,000 people as a precaution in the eastern and central Philippines, although the unusual summer storm is not expected to blow into land, officials said Monday. (FO1 Marianne Jabinal/ San Policarpo Firestation via AP)

An approaching powerful typhoon has left at least one person dead, another missing and prompted the evacuation of more than 100,000 people as a precaution in the eastern and central Philippines, although the unusual summer storm is not expected to blow into land, officials said Monday.

Typhoon Surigae was about 500 kilometers (310 miles) east of Infanta town in Quezon province on Monday afternoon with sustained winds of 195 kilometers (121 miles) per hour and gusts of up to 240 kph (149 mph). It is forecast to slowly move northwestward and then veer eastward away from the northern Philippines around Thursday.

Vicente Malano, administrator of the government weather agency, said a high pressure area extending from China to Japan was blocking the typhoon from blowing inland.

"We're lucky it's not going to make landfall because if it hits land, it's really going to be super devastating," said Ariel Rojas from the weather agency.

The typhoon's 900-kilometer (560-mile) band of rainclouds and strong winds nevertheless flooded at least 22 villages and caused power outages in four provinces. More than 3,200 people and 43 ferries and [cargo ships](#) were stranded in seaports after the [coast guard](#) suspended sea travel as the [typhoon](#) blew nearer, the government disaster-response agency and the coast guard said.



In this photo provided by the San Policarpo Firestation, a man wades through floodwater caused by Typhoon Surigae in the municipality of San Policarpo, Eastern Samar, eastern Philippines on Sunday April 18, 2021. An approaching typhoon has left at least one person dead, another missing and prompted the evacuation of more than 100,000 people as a precaution in the eastern and central Philippines, although the unusual summer storm is not expected to blow into land, officials said Monday. (FO1 Marianne Jabinal/ San Policarpo Firestation via AP)

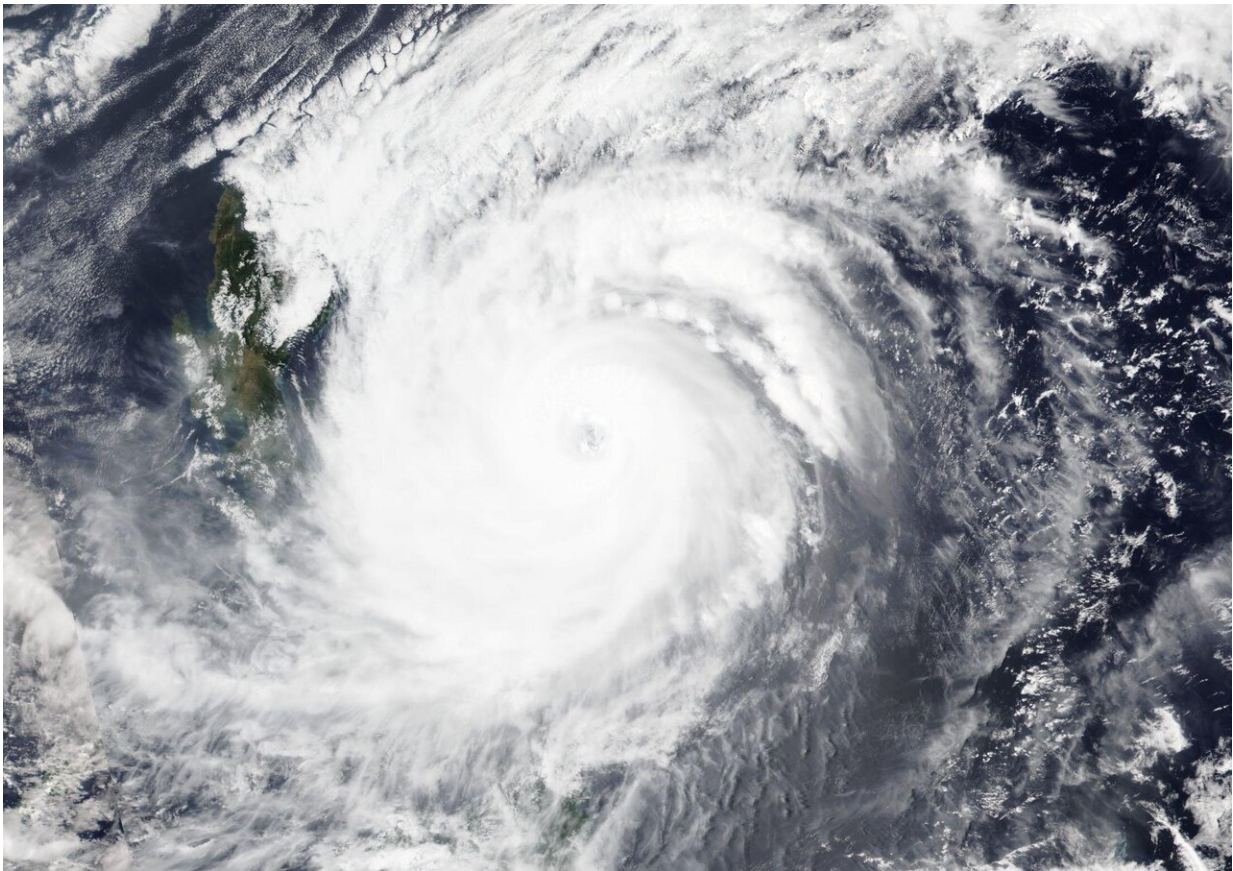
A 79-year-old man died in St. Bernard town in Southern Leyte province after being hit by a falling coconut tree, the Office of Civil Defense said. Another villager in San Jose town in Northern Samar province was missing after he went to a nearby island in a motorboat to secure his farm animals, it said.

More than 29,300 families or 109,000 people were evacuated to [emergency shelters](#) as a precaution in five eastern provinces in the Bicol



region, it said. Mayors said they have to open more evacuation centers to ensure social distancing during the pandemic.

"It's really tough, it's toxic, but we have no choice," Mayor Ann Gemma Ongjoco of Guinobatan town in Albay [province](#) said by telephone. She said even churches were being used to shelter more than 6,100 villagers in her town, including many from communities threatened by mudflows from Mayon, one of the most active volcanoes in the archipelago.



This April, 19, 2021 satellite image released NASA shows typhoon Surigae over Philippines. The approaching typhoon has prompted the evacuation of more than 100,000 people as a precaution in the Philippines, although the unusual summer storm is not expected to blow into land. (NASA Worldview, Earth Observing System Data and Information System (EOSDIS) via AP)



This April, 17, 2021 satellite image released NASA shows typhoon Surigae approaching Philippines. The approaching typhoon has prompted the evacuation of more than 100,000 people as a precaution in the Philippines, although the unusual summer storm is not expected to blow into land. (NASA Worldview, Earth Observing System Data and Information System (EOSDIS) via AP)

The Philippines is a coronavirus hotspot in Southeast Asia, with health officials reporting 945,745 infections and 16,048 deaths.

About 20 typhoons and storms lash the Philippines each year. It also sits in the so-called Pacific "Ring of Fire," a seismically sensitive region often hit by earthquakes and volcanic eruptions, making the impoverished nation one of the world's most disaster-prone countries.

© 2021 The Associated Press. All rights reserved. This material may not be published, broadcast, rewritten or redistributed without permission.

Citation: 1 dead, 100,000 displaced as typhoon blows near Philippines (2021, April 19) retrieved 23 June 2024 from <https://phys.org/news/2021-04-dead-displaced-typhoon-philippines.html>

This document is subject to copyright. Apart from any fair dealing for the purpose of private study or research, no part may be reproduced without the written permission. The content is provided for information purposes only.