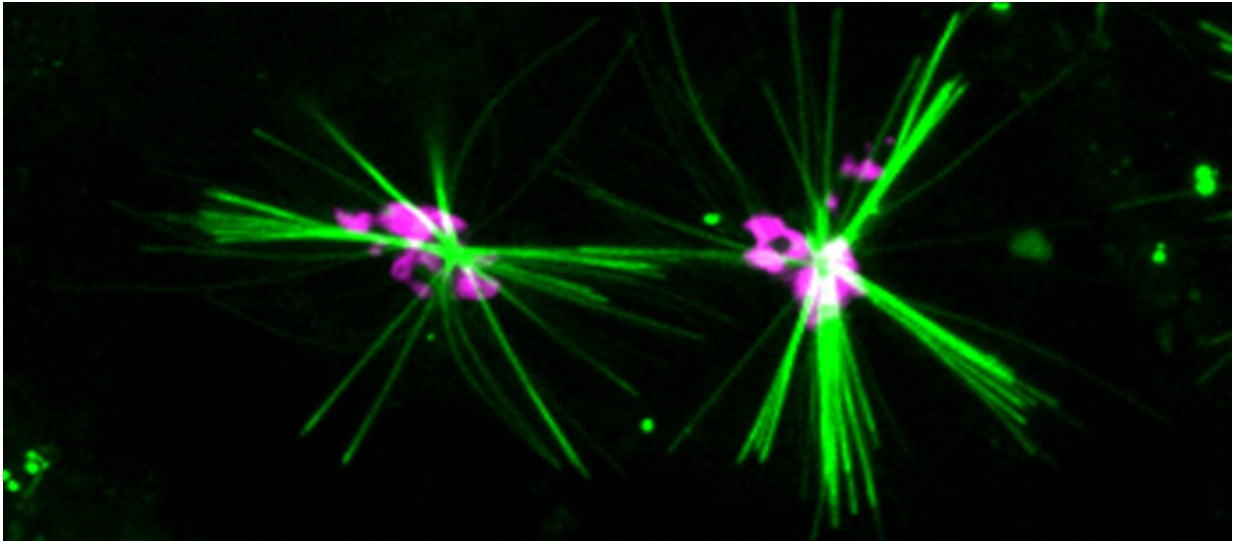


# Tracking proteins in the heart of cells

March 5 2021

---



A precipitating dye generates fluorescent, aster-like crystals (green) in live cells recording the motion of the motor protein kinesin-1 along microtubules. The crystals are centred in the Golgi apparatus (magenta) and extends towards the periphery of the cells, consistently with the transport activity of kinesin-1.

Credit: © UNIGE

Cells must provide their internal organelles with all the energy elements they need, which are formed in the Golgi apparatus, the center of maturation and redistribution of lipids and proteins. But how do the proteins that carry these cargoes—the kinesins—find their way and direction within the cell's "road network" to deliver them at the right place? Chemists and biochemists at the University of Geneva (UNIGE),

Switzerland, have discovered a fluorescent chemical dye, and for the first time, tracked the transport activity of a specific motor protein within a cell. The results are published in *Nature Communications*.

"It all started from a study that didn't go as planned," says Nicolas Winssinger, professor at the Department of Organic Chemistry of the Faculty of Science at UNIGE. "Initially, we wanted to develop a molecule that would make it possible to visualize the stress level of the cell, i.e., when it accumulates excess active oxygen species. During the experiment, the molecule did not work, but crystallized. Why did it crystallize? What were these crystals?"

Three hypotheses emerged, and the team reached out to Charlotte Aumeier, professor in the Department of Biochemistry of the Faculty of Sciences of the UNIGE to verify them. The first hypothesis suggested that crystallization was due to the microtubules that polymerise.

"Microtubules are small, rigid tubes that can grow or shrink and constitute the 'road network' that allows molecules to move around the cell," explains Aumeier. The second hypothesis suggested that the Golgi apparatus was responsible for this chemical reaction. The last possibility suggested that the crystals were the result of the small steps made by the [kinesin](#) proteins in the microtubules as they moved within the cell.

To verify these different options, the UNIGE team joined forces with the National Institute of Health (NIH) in Bethesda (U.S.), which specializes in electron microscopy. "We first recreated microtubules that we purified, which takes 14 hours," explains Charlotte Aumeier. "We isolated kinesins, the motor proteins that move on microtubules and transport cargo, from bacteria." The scientists then put together about 20 different mixtures containing the small molecule QPD, which is systematically present in the crystals, and observed which solution worked. "We wanted to know what was needed to form the crystals. The microtubules? The kinesin? Yet another [protein](#)?" asks Nicolas

Winssinger.

Following experiments, the team discovered that the formation of these crystals was caused by one of the 45 types of kinesin present in the cell. "With each small step that this kinesin protein takes on the [microtubule](#), it uses energy that leaves a trace identified by the QPD molecule," says the Winssinger. It is from this recognition that the crystals are formed. In this way, the crystals are chemically left behind by the passage of the kinesin, which could be tracked by the scientists.

## The opening of a new field of study

"Until now, it has not been possible to track a particular protein. With current techniques, we couldn't separate the individual kinesins, so we couldn't see which path they took precisely," says Aumeier. "Thanks to the development of our new chemical fluorescent dye, we can observe in detail how a protein behaves, which route it takes, its direction or even its preferred path." For the first time, scientists can visualize the walking path of motor proteins and study the fundamental question of the transport activity and distribution of cargoes in [cells](#).

**More information:** Simona Angerani et al. Kinesin-1 activity recorded in living cells with a precipitating dye, *Nature Communications* (2021). [DOI: 10.1038/s41467-021-21626-1](https://doi.org/10.1038/s41467-021-21626-1)

Provided by University of Geneva

Citation: Tracking proteins in the heart of cells (2021, March 5) retrieved 19 April 2024 from <https://phys.org/news/2021-03-tracking-proteins-heart-cells.html>

This document is subject to copyright. Apart from any fair dealing for the purpose of private

study or research, no part may be reproduced without the written permission. The content is provided for information purposes only.