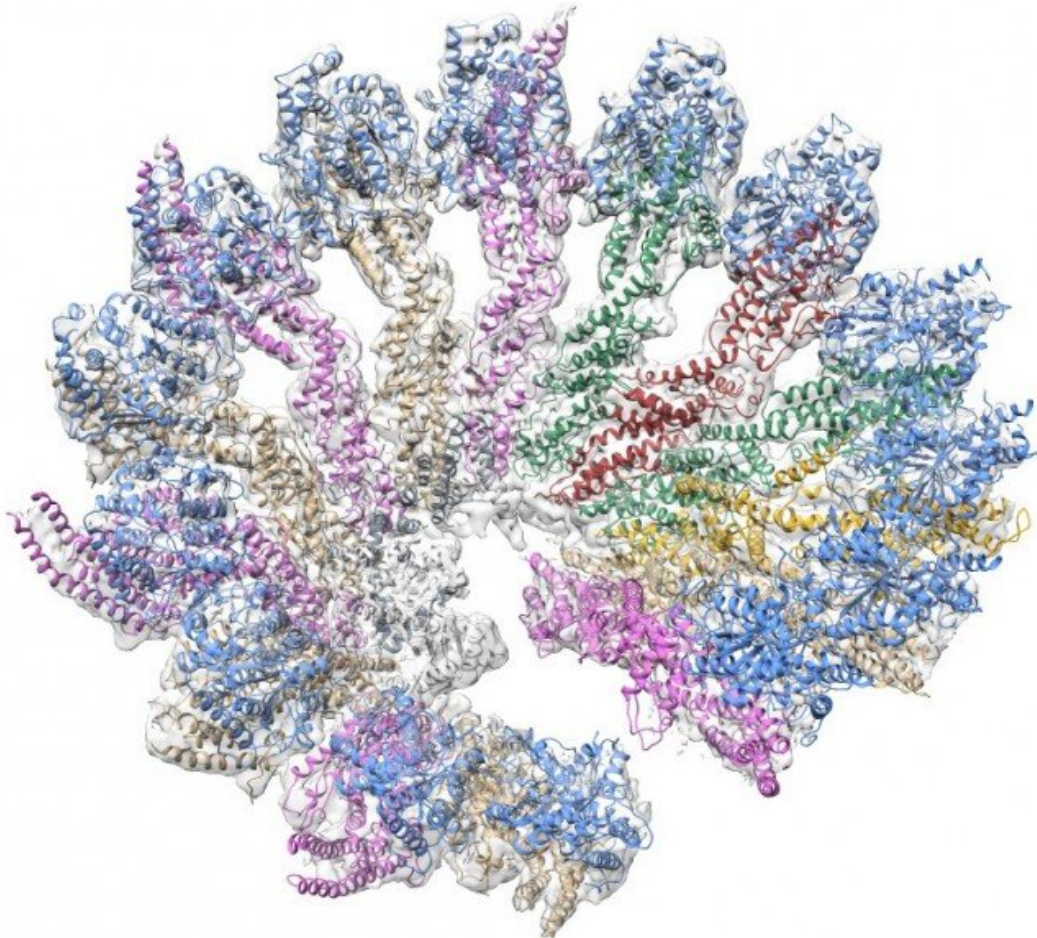


Scientists assemble the gamma-tubulin ring complex in vitro for the first time

December 21 2020



3-D structure of the human γ -tubulin ring complex. Credit: Institute for Research in Biomedicine (IRB Barcelona)

Researchers from the Microtubule Organization lab, headed by Jens Lüders at IRB Barcelona, and the Macromolecular Complexes in DNA Damage Response Group, led by Oscar Llorca at the Spanish National Cancer Research Centre (CNIO), have achieved the first in vitro reconstitution of the human γ -tubulin ring complex (γ TuRC), responsible for initiating microtubule formation. In addition, they revealed its 3-D structure by cryo-electron microscopy. The key to their success lies in the identification of the RUVBL protein complex as an essential γ TuRC assembly helper.

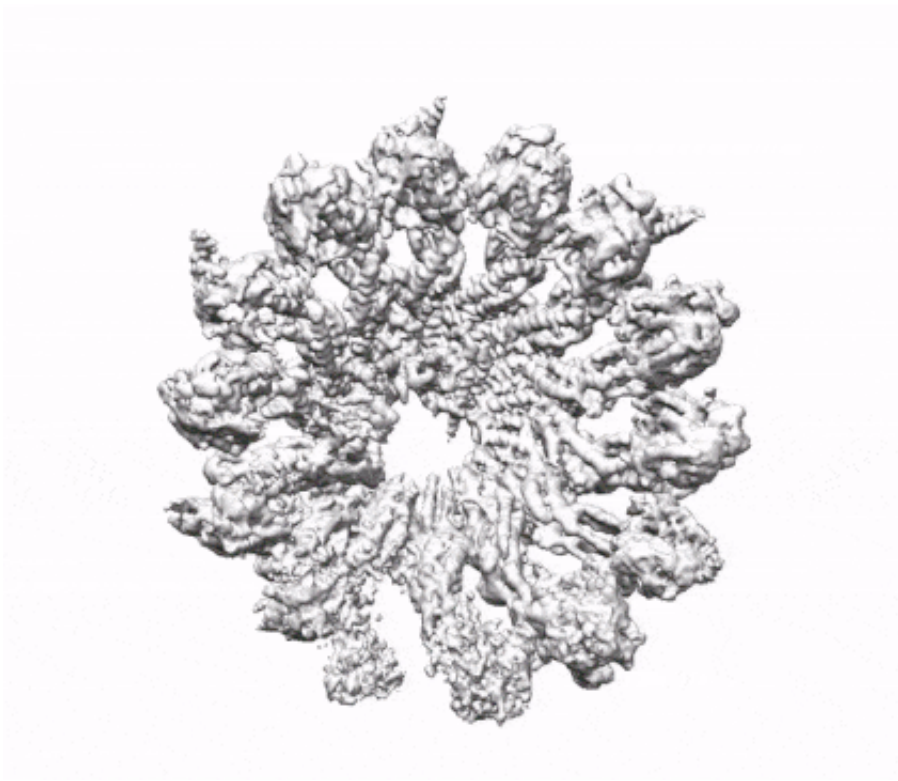
Microtubules are a component of the cytoskeleton, which is essential for intracellular transport processes and [cell division](#). Microtubules cannot form spontaneously in cells but require nucleation by the γ TuRC. Mutations in γ TuRC subunits cause neurodevelopmental defects such as microcephaly and have also been linked to defects in the retina.

"Although the γ TuRC was discovered 25 years ago, the field had not been successful in producing it recombinantly in vitro," says co-corresponding author Jens Lüders, "this new achievement opens the door to studies aimed at elucidating the [microtubule](#) nucleation mechanism and how it is regulated". It will also allow the study of the mutations found in patients and predictions of their effects, to better understand how they cause disease.

The RUVBL protein complex, essential for the construction of the γ TuRC

The difficulty to assemble the γ TuRC in vitro is due not only to its

complex 3-D [structure](#) but also to the need of RUVBL for the assembly and formation of the ring-shaped TuRC. "When I started this project I analyzed previously published data, and noticed that a requirement for RUVBL in γ TuRC assembly had never been considered before—it was very gratifying to see that this was indeed the key to our success" explains first author Fabian Zimmerman, Ph.D. student in the Microtubule Organization lab at IRB Barcelona.



Credit: Institute for Research in Biomedicine (IRB Barcelona)

"Our group has been exploring the function of RUVBL in the assembly of large macromolecular structures relevant to cancer for years. Discovering that RUVBL is also essential for the formation of γ TuRC opens new avenues of research to understand how cells build complex

functional structures," says co-corresponding author Oscar Llorca.

" γ TuRC is a very large structure built by multiple and interconnected subunits. Determining its 3-D architecture has been an immense challenge, made possible by advances in cryo-[electron microscopy](#) methods that allowed us to observe individual molecules of this complex with extremely high detail ", explains co-first author Marina Serna.

More information: Fabian Zimmermann et al. Assembly of the asymmetric human γ -tubulin ring complex by RUVBL1-RUVBL2 AAA ATPase. *Science Advances* (2020) [DOI: 10.1126/sciadv.abe0894](https://doi.org/10.1126/sciadv.abe0894)

Provided by Institute for Research in Biomedicine (IRB Barcelona)

Citation: Scientists assemble the gamma-tubulin ring complex in vitro for the first time (2020, December 21) retrieved 24 April 2024 from <https://phys.org/news/2020-12-scientists-gamma-tubulin-complex-vitro.html>

This document is subject to copyright. Apart from any fair dealing for the purpose of private study or research, no part may be reproduced without the written permission. The content is provided for information purposes only.