

Powerful typhoon lashes Philippines, killing at least 10 (Update)

November 1 2020, by Jim Gomez and Joael Calupitan



Floodwaters pass by Cagsawa ruins, a famous tourist spot in Daraga, Albay province, central Philippines as Typhoon Goni hit the area Sunday, Nov. 1, 2020. The super typhoon slammed into the eastern Philippines with ferocious winds early Sunday and about a million people have been evacuated in its projected path, including in the capital where the main international airport was ordered closed. (AP Photo/Alejandro Mirafior)

A super typhoon blew into the eastern Philippines with disastrous force Sunday, killing at least 10 people and triggering volcanic mudflows that engulfed about 150 houses before weakening as it blew away from the country, officials said.

Typhoon Goni blasted into the eastern island province of Catanduanes at dawn from the Pacific with sustained winds of 225 kilometers (140 miles) per hour and gusts of 280 kph (174 mph), threatening some provinces still recovering from a deadly typhoon that hit a week ago.

Goni barreled through densely populated regions and threatened to sideswipe Manila, which shut down its main airport, but shifted southward Sunday night and spared the capital, the government weather agency said.

At least nine people were killed in the hard-hit province of Albay, including a father and son. Villagers fled to safety as the typhoon approached, but the two apparently stayed put in the community in Guinobatan town where about 150 houses were inundated by volcanic mudflow.

"The child was found 15 kilometers (9 miles) away," Albay Gov. Al Francis Bichara told DZMM radio, adding that the boy was swept away by mudflows and found in the next town.

He did not say whether there were any other residents trapped by the rampaging mudflows in the community and added that downed communications made it hard for people to communicate. The Office of Civil Defense reported that three Guinobatan residents were missing, but it was not immediately clear if they were from the mudflow-hit community.



An All-Terrain Vehicle is toppled by strong winds and floods from Typhoon Goni as it hits Daraga, Albay province, central Philippines, Sunday, Nov. 1, 2020. The super typhoon slammed into the eastern Philippines with ferocious winds early Sunday and about a million people have been evacuated in its projected path, including in the capital where the main international airport was ordered closed. (AP Photo)

The other deaths in Albay included a villager who was pinned by a fallen tree. One person was killed in Catanduanes province.

Ricardo Jalad, who heads the government's disaster-response agency, had feared that the typhoon could wreak major damage due to its enormous force. The Philippine weather agency reinforced those

concerns, saying that within 12 hours after the typhoon's landfall, people could face "catastrophic, violent winds and intense to torrential rainfall."

Residents were warned of possible landslides, massive flooding, storm surges of up to 5 meters (16 feet) and powerful winds that can blow away shanties. But after hitting a mountain range and repeatedly slamming into coastal provinces, the typhoon gradually weakened, although it remained potentially deadly as it blew out into the South China Sea, forecasters said.



In this photo provided by the Civil Aviation Authority of the Philippines, debris from a damaged structure at the Naga airport in Naga city, central Philippines, as Typhoon Goni hits the country Sunday, Nov. 1, 2020. The super typhoon has slammed into the eastern Philippines with ferocious winds, knocking down power in several towns and prompting the evacuation of about a million people

in its projected path. (Civil Aviation Authority of the Philippines via AP)

One of the most powerful typhoons in the world this year, Goni evoked memories of Typhoon Haiyan, which left more than 7,300 people dead or missing, flattened entire villages, swept ships inland and displaced more than 5 million in the central Philippines in November 2013.

Manila's main airport was ordered shut down for 24 hours from Sunday to Monday, and airlines canceled dozens of international and domestic flights. Commuter train services were also suspended and a no-sail policy restriction was imposed by the coast guard due to initial fear over the typhoon's threatening power. The military and national police, along with the coast guard, were put on full alert.

Jalad said nearly a million people were preemptively moved into emergency shelters.

In a Manila gymnasium that was turned into an emergency shelter, COVID-19 outbreaks were an added worry of displaced residents. The Philippines has had more than 383,000 cases of the virus, the second-most in Southeast Asia behind Indonesia.



Residents walk along floodwaters in Daraga, Albay province, central Philippines as Typhoon Goni hit the area Sunday, Nov. 1, 2020. The super typhoon slammed into the eastern Philippines with ferocious winds early Sunday and about a million people have been evacuated in its projected path, including in the capital where the main international airport was ordered closed. (AP Photo/Alejandro Mirafior)



Rescuers carry the body of a man that drowned in floods as Typhoon Goni hit Guinobatan, Albay province, central Philippines, Sunday, Nov. 1, 2020. The super typhoon slammed into the eastern Philippines with ferocious winds early Sunday and about a million people have been evacuated in its projected path, including in the capital where the main international airport was ordered closed. (AP Photo)



Electrical poles are toppled due to strong winds from Typhoon Goni in Daet, Camarines Norte province, central Philippines, Sunday Nov. 1, 2020. The super typhoon slammed into the eastern Philippines with ferocious winds early Sunday and about a million people have been evacuated in its projected path, including in the capital where the main international airport was ordered closed. (AP Photo/Sharalaine Robles Gonzales)



A man looks as floodwaters inundate an area as Typhoon Goni hit Daraga, Albay province, central Philippines, Sunday, Nov. 1, 2020. The super typhoon slammed into the eastern Philippines with ferocious winds early Sunday and about a million people have been evacuated in its projected path, including in the capital where the main international airport was ordered closed. (AP Photo)



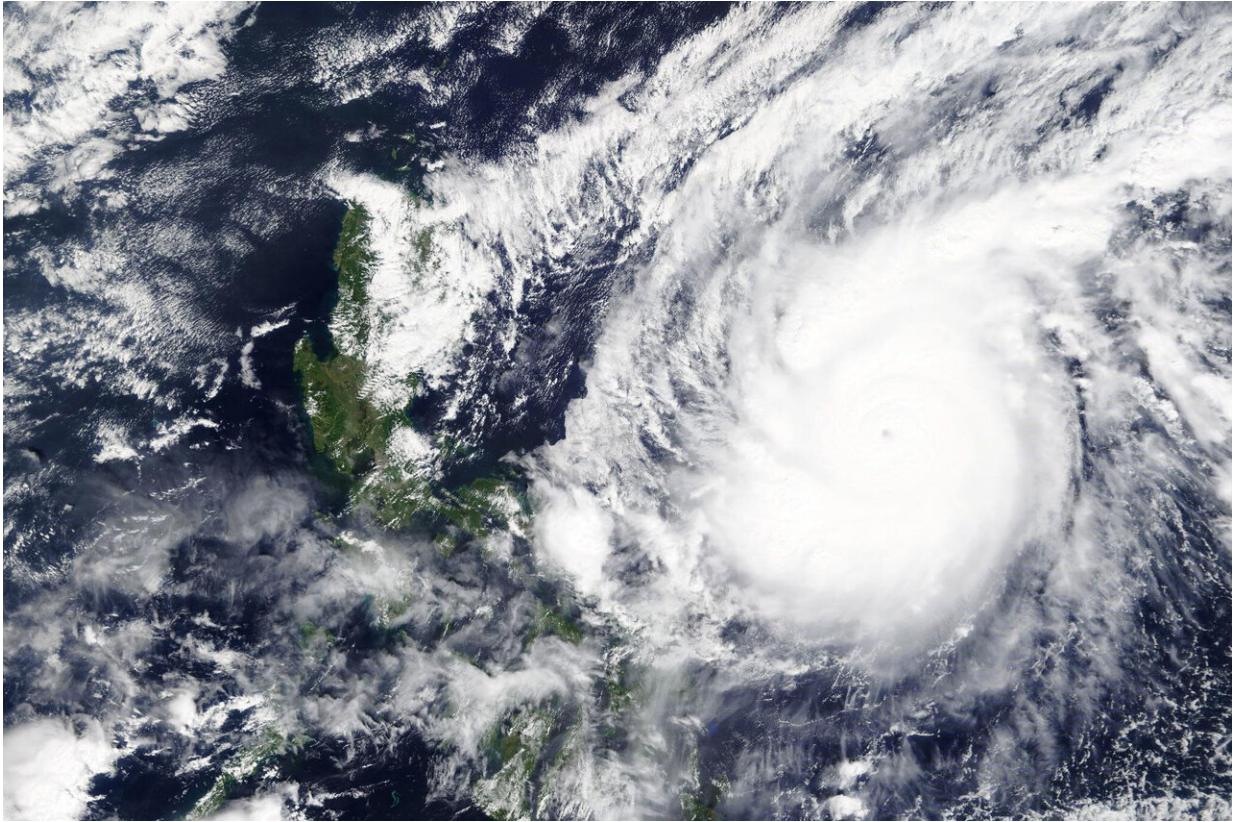
This photo provided by the Civil Aviation Authority of the Philippines shows a damaged roof at the Naga airport in Naga city, central Philippines, as Typhoon Goni hits the country, Sunday Nov. 1, 2020. The super typhoon has slammed into the eastern Philippines with ferocious winds, knocking down power in several towns and prompting the evacuation of about a million people in its projected path. (Civil Aviation Authority of the Philippines via AP)



Residents walk along floodwaters in Daraga, Albay province, central Philippines as Typhoon Goni hit the area on Sunday Nov. 1, 2020. The super typhoon slammed into the eastern Philippines with ferocious winds early Sunday and about a million people have been evacuated in its projected path, including in the capital where the main international airport was ordered closed. (AP Photo/Alejandro Mirafior)



Residents stay inside an evacuation center as rains from a typhoon locally known as Gonistart start to pour in Manila, Philippines on Sunday, Nov. 1, 2020. The super typhoon slammed into the eastern Philippines with ferocious winds early Sunday and about a million people have been evacuated in its projected path, including in the capital where the main international airport was ordered closed. (AP Photo/Aaron Favila)



This Saturday, Oct. 31, 2020, satellite image released by NASA Worldview, Earth Observing System Data and Information System (EOSDIS) shows a typhoon locally known as Goni moving around the Philippines. The super typhoon slammed into the eastern Philippines with "catastrophic violent winds" early Sunday and about a million people have been evacuated in its projected path, including in the capital where the main international airport has been ordered closed, officials said. (NASA via AP)



Residents occupy an evacuation center as rains from a typhoon locally known as Goni start to pour in Manila, Philippines on Sunday, Nov. 1, 2020. The super typhoon slammed into the eastern Philippines with ferocious winds early Sunday and about a million people have been evacuated in its projected path, including in the capital where the main international airport was ordered closed. (AP Photo/Aaron Favila)



Residents take advantage of tents provided at an evacuation center as rains from a typhoon locally known as Goni start to pour in Manila, Philippines on Sunday, Nov. 1, 2020. A super typhoon slammed into the eastern Philippines with ferocious winds early Sunday and about a million people have been evacuated in its projected path, including in the capital where the main international airport was ordered closed. (AP Photo/Aaron Favila)



Strong waves batter the coast of Sorsogon province, central Philippines as a typhoon locally known as Goni hits the country on Sunday, Nov. 1, 2020. The super typhoon slammed into the eastern Philippines with ferocious winds early Sunday and about a million people have been evacuated in its projected path, including in the capital where the main international airport was ordered closed. (AP Photo)



A resident carries her dog inside an evacuation center as rains from a typhoon locally known as Goni start to pour in Manila, Philippines on Sunday, Nov. 1, 2020. A super typhoon slammed into the eastern Philippines with ferocious winds early Sunday and about a million people have been evacuated in its projected path, including in the capital where the main international airport was ordered closed. (AP Photo/Aaron Favila)



Residents walk past a toppled structure as waves batter the coast of Sorsogon province, central Philippines as Typhoon Goni hits the country on Sunday, Nov. 1, 2020. A super typhoon slammed into the eastern Philippines with ferocious winds early Sunday and about a million people have been evacuated in its projected path, including in the capital where the main international airport was ordered closed. (AP Photo)



Strong waves batter the coast of Sorsogon province, central Philippines as a typhoon locally known as Goni hits the country on Sunday Nov. 1, 2020. The super typhoon slammed into the eastern Philippines with ferocious winds early Sunday and about a million people have been evacuated in its projected path, including in the capital where the main international airport was ordered closed. (AP Photo)



A rescuer carries a sick child as they evacuate residents living along a coastal community in Manila, Philippines on Sunday, Nov. 1, 2020. A super typhoon slammed into the eastern Philippines with ferocious winds early Sunday and about a million people have been evacuated in its projected path, including in the capital where the main international airport was ordered closed. (AP Photo/Aaron Favila)



A woman wearing a face mask to prevent the spread of the coronavirus walks as rains from a typhoon locally known as Goni starts in Manila, Philippines on Sunday Nov. 1, 2020. The super typhoon slammed into the eastern Philippines with ferocious winds early Sunday and about a million people have been evacuated in its projected path, including in the capital where the main international airport was ordered closed. (AP Photo/Aaron Favila)

"We are scared—our fears are doubled," said Jaqueline Almocera, a 44-year-old street vendor who took cover at the shelter.

The Philippines is lashed by about 20 typhoons and storms each year. It's also located on the so-called Pacific "Ring of Fire," where earthquakes and volcanic eruptions are common, making it one of the world's most disaster-prone countries.

© 2020 The Associated Press. All rights reserved. This material may not be published, broadcast, rewritten or redistributed without permission.

Citation: Powerful typhoon lashes Philippines, killing at least 10 (Update) (2020, November 1) retrieved 2 May 2024 from

<https://phys.org/news/2020-11-super-typhoon-batters-philippines-million.html>

This document is subject to copyright. Apart from any fair dealing for the purpose of private study or research, no part may be reproduced without the written permission. The content is provided for information purposes only.