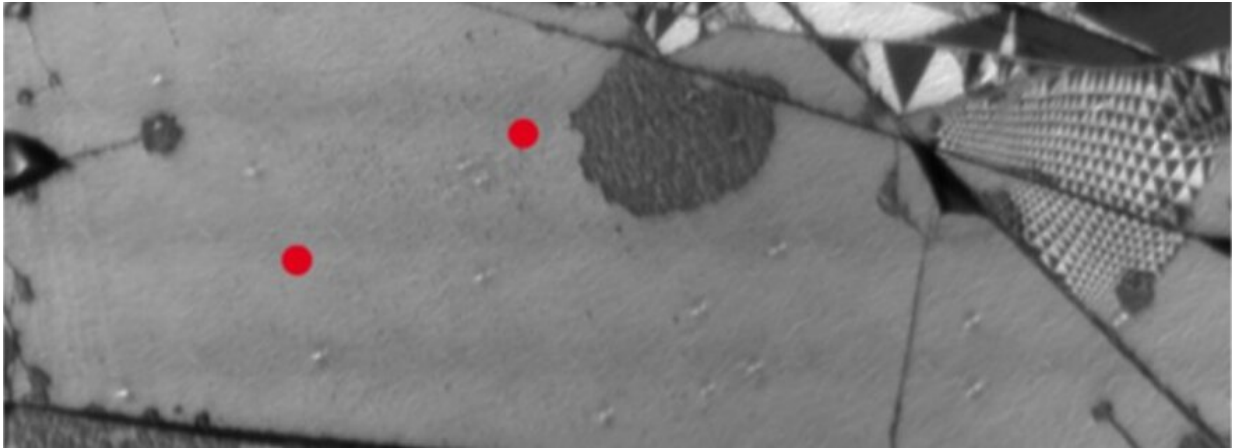


Superconductivity with a twist explained

September 29 2020, by Bruno Van Wayenburg



LEEM image of the sample. The triangles on the right indicate a low angle patch.
Credit: Leiden University

Leiden physicists and international colleagues from Geneva and Barcelona have confirmed the mechanism that makes magic-angle graphene superconducting. This is a key step in elucidating high-temperature superconductivity, a decades-old mystery central to physics, which may lead to technological breakthroughs.

Magic-angle materials form a surprising recent physics discovery. "You take a sheet of graphene," says Sense Jan van der Molen, referring to the two-dimensional material made of [carbon atoms](#) in a [hexagonal pattern](#), "then you put another layer on top of it and twist the latter by 1 degree. This way, you suddenly get a superconductor."

At a temperature of 1.7 Kelvin, twisted bilayer graphene (tbg) conducts electricity without resistance. Now, Van der Molen, his Leiden colleague Milan Allan and international colleagues have finally confirmed the mechanism behind these fascinating new superconductors.

In the journal *Nature Physics*, they show that the slight twist in graphene causes the electrons to slow down enough to sense each other. This enables them to form the electron pairs necessary for superconductivity.

Moiré patterns

How can such a small twist make such a big difference? This is connected with moiré patterns, a phenomenon seen in the everyday world. For instance, when two chicken-wire fences are in front of another, one observes additional dark and bright spots, caused by the varying overlap between the patterns. Such moiré patterns (from the french moirer, to crease) generally appear where periodical structures overlap imperfectly.

Twisted [bilayer graphene](#) is just such a situation: the interplay between the two hexagonal carbon lattices, slightly twisted, causes a much larger hexagonal moiré pattern to emerge. By creating this new periodicity, the interaction between the electrons changes, yielding these "slow" electrons. In numerous papers, clear signs of the superconductivity have been measured, but the intermediate step of slow electrons has been much harder to pin down.

Looking for patches

"You need to have good samples," Van der Molen explains the success. Fortunately, the co-authors from Barcelona are known to make high-quality samples. "Next, you need to know exactly where to look." Even

in a good sample, the correct twist angle is only achieved in small patches of double-layer graphene.

Van der Molen's Low-Energy Electron Microscope (LEEM) and Allan's Scanning Tunneling Microscope (STM) helped find exactly those patches.

Then, a group in Geneva used nano-ARPES, an imaging technique, to demonstrate the slowing down of the electrons. Allan: "Many groups tried hard to do that. Only one other group succeeded, and they have a parallel publication."

Hypersensitive detectors

Elucidating and then optimizing this type of superconductivity could also lead to numerous technological applications, ranging from lossless energy transport to hypersensitive light detectors.

In fact, Michiel de Dood, also at Leiden, is now pioneering such detectors. Van der Molen: "It's fundamental work, but we keep our eyes open for applications too."

More information: Simone Lisi et al. Observation of flat bands in twisted bilayer graphene, *Nature Physics* (2020). [DOI: 10.1038/s41567-020-01041-x](https://doi.org/10.1038/s41567-020-01041-x)

Provided by Leiden University

Citation: Superconductivity with a twist explained (2020, September 29) retrieved 3 May 2024 from <https://phys.org/news/2020-09-superconductivity.html>

This document is subject to copyright. Apart from any fair dealing for the purpose of private study or research, no part may be reproduced without the written permission. The content is provided for information purposes only.