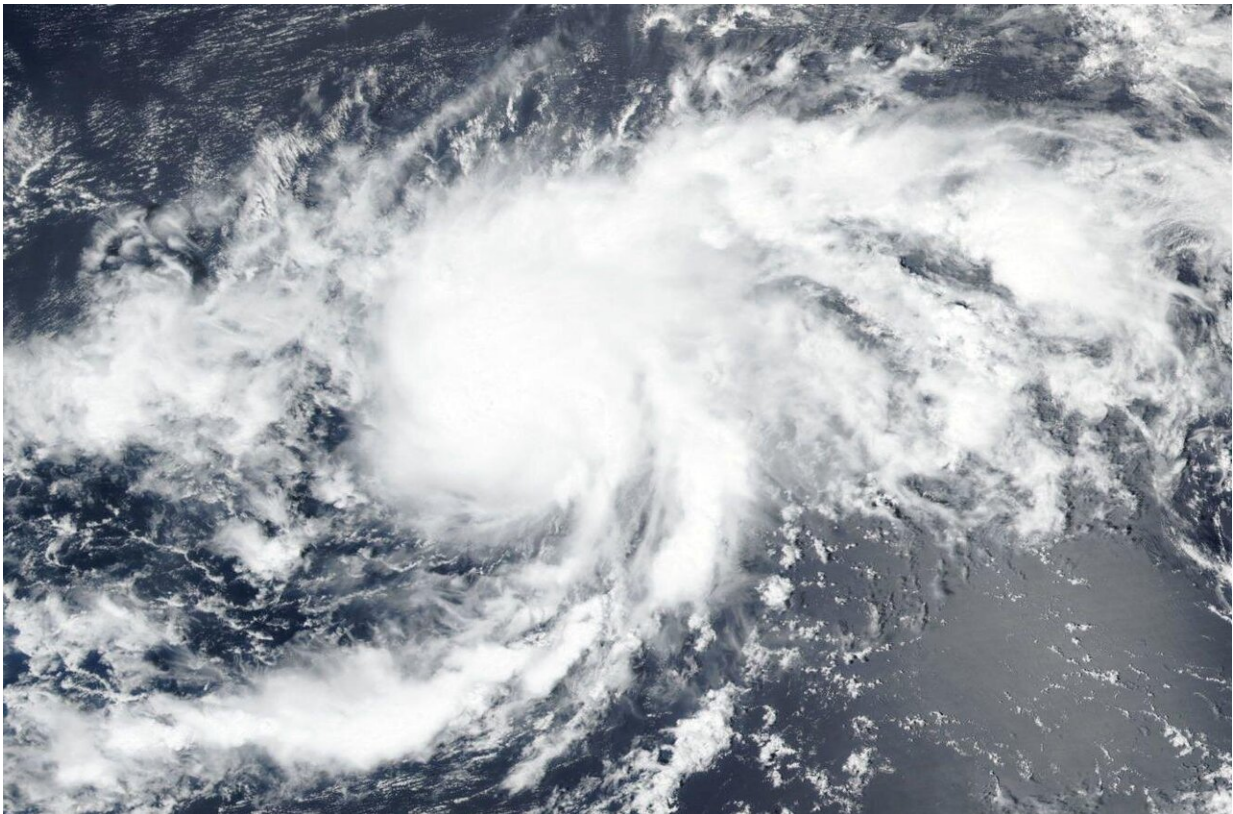


# NASA-NOAA satellite tracking record-breaking Tropical Storm Paulette

September 9 2020

---



On Sept. 8, NASA-NOAA's Suomi NPP satellite provided forecasters with a visible image of Tropical Storm Paulette in the Central North Atlantic Ocean. Credit: NASA Worldview, Earth Observing System Data and Information System (EOSDIS)

NASA-NOAA's Suomi NPP satellite provided forecasters with a visible

image of Tropical Storm Paulette as it tracked through the Central North Atlantic Ocean on Sept. 8. Paulette, like some other tropical storms this year, has broken a season record.

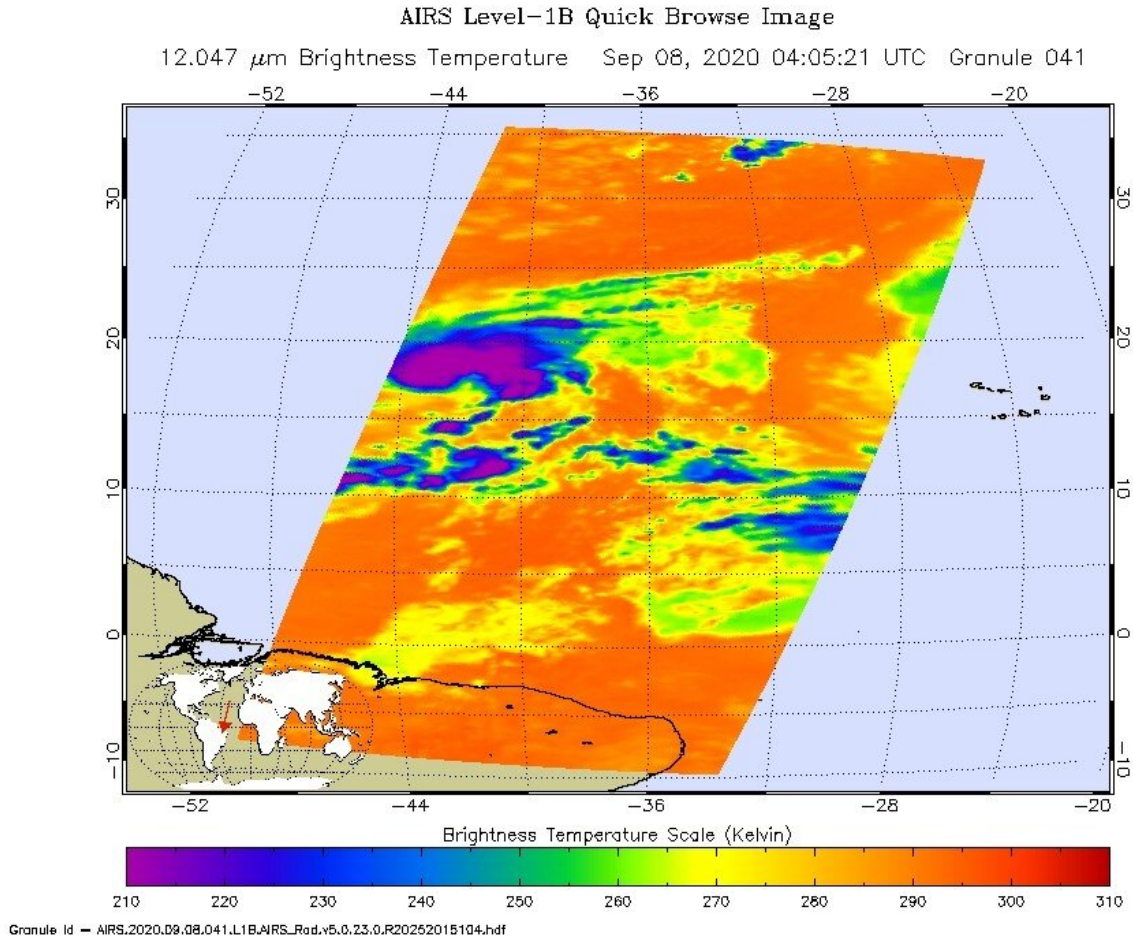
Tropical Depression 17 developed on Sunday, Sept. 6 by 11 p.m. EDT about 1,160 miles (1,865 km) west of the Cabo Verde Islands. Twelve hours later on Sept. 7 at 11 a.m. EDT, it had strengthened and organized into a tropical storm and was renamed Tropical Storm Paulette.

## **Record-Breaking Paulette**

Paulette's development set another hurricane season record. Paulette is the 16th named storm of the 2020 Atlantic hurricane season. It is also the earliest 16th named storm of any Atlantic season by 10 days. The previous record was Philippe, which formed on September 17, 2005.

## **Satellite Views of Paulette**

On Sept. 8, the Visible Infrared Imaging Radiometer Suite (VIIRS) instrument aboard Suomi NPP provided a visible image of Paulette when it passed overhead. Forecasters looking at the VIIRS imagery noted that Paulette's organization had noticeably improved since last night. The [tropical storm](#) is still sheared ([vertical wind shear](#) is pushing against the [storm](#) from the northeast), with its outflow restricted to the southwest.



On Sept. 8 at 12:05 a.m. EDT (0405 UTC) NASA's Aqua satellite analyzed Paulette using the AIRS found coldest cloud top temperatures as cold as or colder than minus 63 degrees Fahrenheit (minus 53 degrees Celsius). Credit: NASA JPL/Heidar Thrastarson

The National Hurricane Center noted, "Overnight AMSU imagery indicated that convection was beginning to wrap around the western portion of its circulation." The Advanced Microwave Sounding Unit (AMSU) is a multi-channel microwave radiometer installed on meteorological satellites. The instrument examines several bands of microwave radiation from the atmosphere to perform atmospheric

sounding of temperature and moisture levels. That instrument flies aboard NASA's Aqua satellite and NOAA weather satellites.

On Sept. 8 at 12:05 a.m. EDT (0405 UTC) NASA's Aqua [satellite](#) analyzed Paulette using the Atmospheric Infrared Sounder or AIRS instrument. AIRS found coldest cloud top temperatures as cold as or colder than minus 63 degrees Fahrenheit (minus 53 degrees Celsius). NASA research has shown that cloud top temperatures that cold indicate strong storms that have the capability to create heavy rain.

## **Paulette's Status**

At 11 a.m. EDT (1500 UTC) on Sept. 8, the center of Tropical Storm Paulette was located near latitude 18.4 degrees north and longitude 43.3 degrees west. Paulette is moving toward the northwest near 6 mph (9 kph). The estimated minimum central pressure is 995 millibars. Maximum sustained winds are near 65 mph (100 kph) with higher gusts.

A turn toward the west-northwest or west with a slight increase in forward speed is expected during the next couple of days. Moderate additional strengthening is possible today and Paulette could be near hurricane strength by tonight, Sept. 8.

Provided by NASA's Goddard Space Flight Center

Citation: NASA-NOAA satellite tracking record-breaking Tropical Storm Paulette (2020, September 9) retrieved 28 April 2024 from <https://phys.org/news/2020-09-nasa-noaa-satellite-tracking-record-breaking-tropical.html>

<p>This document is subject to copyright. Apart from any fair dealing for the purpose of private study or research, no part may be reproduced without the written permission. The content is provided for information purposes only.</p>
--