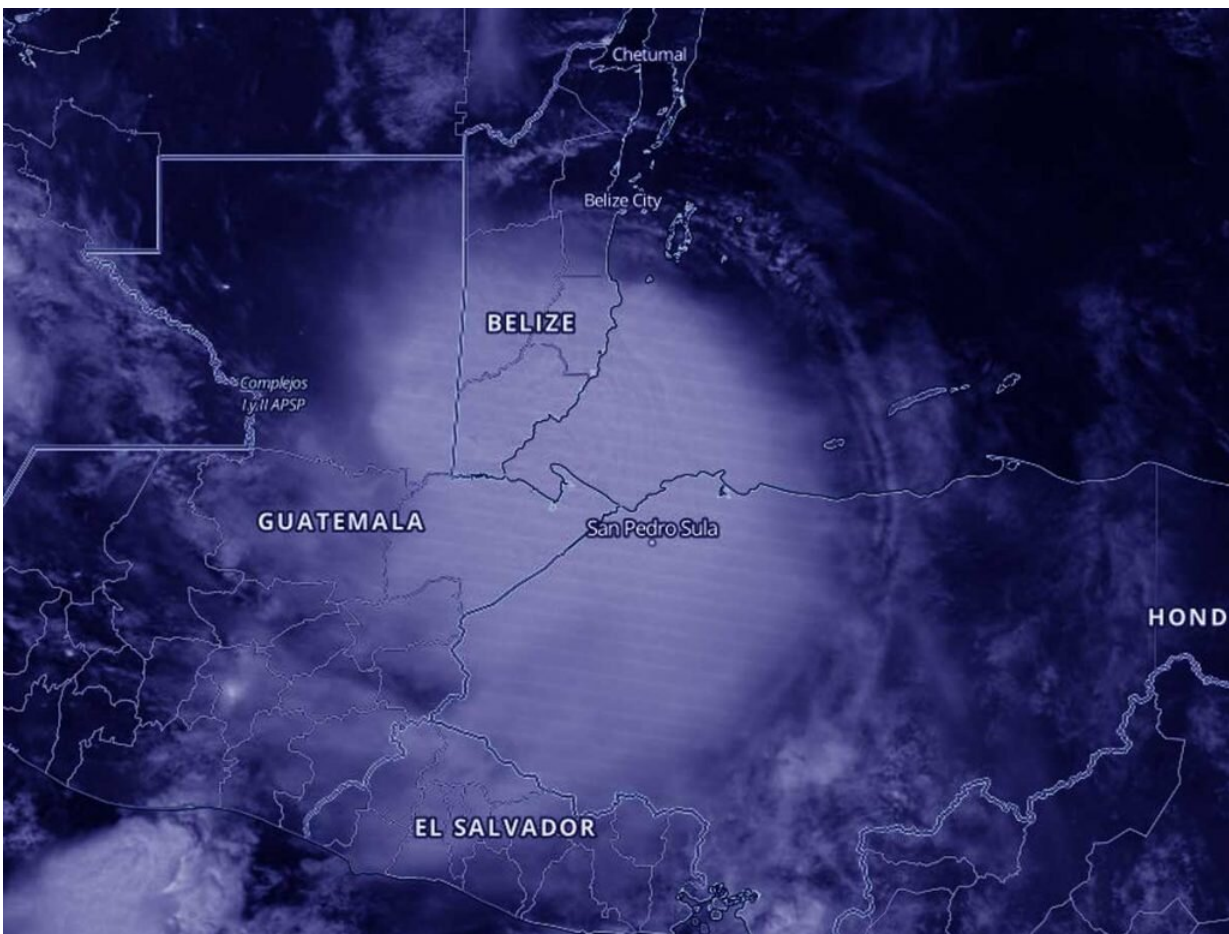


# NASA-NOAA satellite catches Hurricane Nana making landfall under cover of night

September 3 2020, by Rob Gutro

---



NASA-NOAA's Suomi NPP satellite passed over the Caribbean Sea overnight on Sept. 3 at 3:25 a.m. EDT (0725 UTC) and captured a nighttime image of Hurricane Nana just after it made landfall in southern Belize. Credit: NASA Worldview, Earth Observing System Data and Information System (EOSDIS)

NASA-NOAA's Suomi NPP satellite provided a nighttime look at Hurricane Nana just after it began making landfall in Belize.

At 11 p.m. EDT on Sept. 2, Nana strengthened to a Category 1 hurricane on the Saffir-Simpson [hurricane](#) wind scale. It had maximum sustained winds near 75 mph (120 kph). At the time, it was just 60 miles (95 km) southeast of Belize City, Belize. At 2 a.m. EDT on Sept. 3, Hurricane Nana made landfall on the coast of Belize between Dangriga and Placencia with maximum sustained winds near 75 mph (120 kph). By 5 a.m. EDT, the [storm](#) had weakened to a [tropical storm](#) as it continued to move inland.

## **NASA's Night-Time View of Nana's Landfall**

The Visible Infrared Imaging Radiometer Suite (VIIRS) instrument aboard NASA-NOAA's Suomi NPP satellite passed the Caribbean Sea overnight on Sept. 3 at 3:25 a.m. EDT (0725 UTC) and captured a nighttime image of Hurricane Nana just after making landfall in southern Belize. Bands of thunderstorms wrapped around the storm's center and extended into the Caribbean Sea. At NASA's Goddard Space Flight Center in Greenbelt, Md., the imagery was created using the NASA Worldview application.

## **Warnings and Watches on Sept. 3**

NOAA's National Hurricane Center (NHC) noted on Sept. 3 that a Tropical Storm Warning is in effect for the Caribbean Sea coast of Guatemala, Isla Roatan and the Bay Islands of Honduras. A Tropical Storm Watch is in effect for the northern coast of Honduras from Punta Patuca westward to the Guatemala border.

## **Tropical Storm Nana's Status on Sept. 3**

At 8 a.m. EDT (1200 UTC) on Sept. 3, the center of Tropical Storm Nana was located near latitude 16.6 north, longitude 89.7 west. Nana is moving toward the west-southwest near 15 mph (24 kph), and this general motion is expected to continue through today with some decrease in forward speed. Maximum sustained winds have decreased to near 60 mph (95 kph) with higher gusts. The estimated minimum central pressure is 1000 millibars.

## Nana's Fated Forecast

On the forecast track, Nana will continue to move inland over Guatemala and extreme southeastern Mexico today and tonight. Rapid weakening is forecast today and tonight, and Nana will likely become a remnant low-pressure area on Friday, Sept. 4.

**More information:** For updated forecasts, visit: [www.nhc.noaa.gov](http://www.nhc.noaa.gov)

Provided by NASA's Goddard Space Flight Center

Citation: NASA-NOAA satellite catches Hurricane Nana making landfall under cover of night (2020, September 3) retrieved 4 July 2024 from <https://phys.org/news/2020-09-nasa-noaa-satellite-hurricane-nana-landfall.html>

This document is subject to copyright. Apart from any fair dealing for the purpose of private study or research, no part may be reproduced without the written permission. The content is provided for information purposes only.