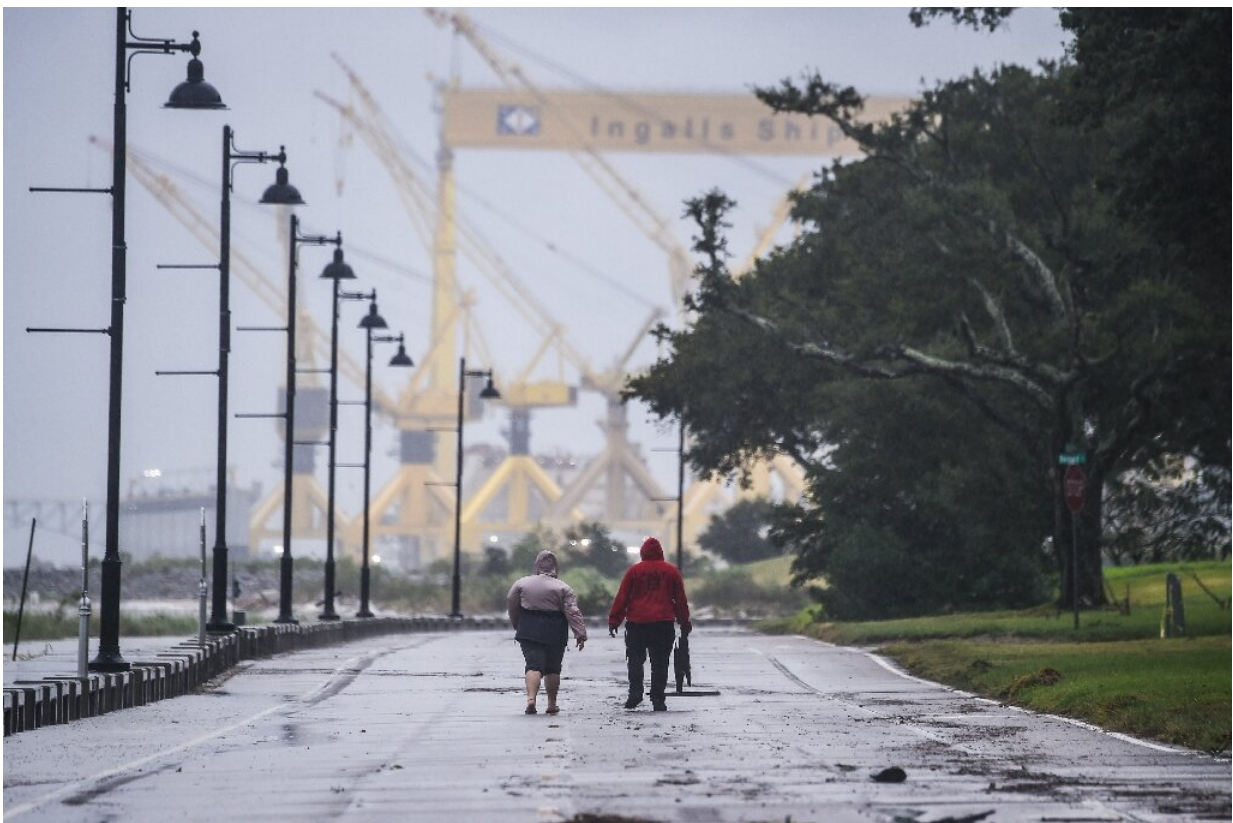


# Hurricane Sally gains strength as it nears southern US

September 16 2020, by Gianrigo Marletta, With Tori Otten In Washington

---



Sally is one of five tropical cyclones in the Atlantic Ocean—a phenomenon only recorded once before, in September 1971, according to meteorologists

Hurricane Sally picked up strength as it edged towards the US Gulf

Coast early Wednesday, with forecasts of drenching rains that could provoke "historic" and potentially deadly flash floods.

The National Hurricane Center (NHC) said [coastal areas](#) in Alabama, Mississippi and Florida were in the sights of the storm, that was packing maximum sustained winds of around 105 miles (165 kilometers) per hour by midnight local time (0500 GMT).

The storm—previously downgraded to Category 1—had strengthened again to Category 2, it said.

"Historic life-threatening flooding likely along portions of the northern Gulf coast," the Miami-based center had warned late Tuesday, adding the hurricane could dump up to 20 inches (50 centimeters) of rain in some areas.

About 75,000 homes in Alabama and Florida were already without power Tuesday evening, according to the Weather Channel, and video posted to social media appeared to show some areas had started to flood.

At 0500 GMT, Sally was about 65 miles south of Mobile, Alabama and heading north at a crawling pace of two miles per hour in the Gulf of Mexico, though the storm was expected to pick up speed through Wednesday.

Sally is one of five [tropical cyclones](#) in the Atlantic Ocean—a phenomenon only recorded once before, in September 1971, according to meteorologists.



Water floods a road in Mississippi hours before Sally made landfall

Alabama governor Kay Ivey told a press conference: "We are looking at record flooding, perhaps breaking historic levels. And with rising water comes a greater risk for loss of property and life."

"I urge you in the strongest way possible to evacuate if conditions permit and seek shelter elsewhere as possible today."

Ivey had declared a state of emergency Monday ahead of Sally's arrival.

President Donald Trump, speaking on "Fox & Friends," compared Sally to Hurricane Laura, which battered Texas and Louisiana, as well as the



Caribbean, just a few weeks ago.

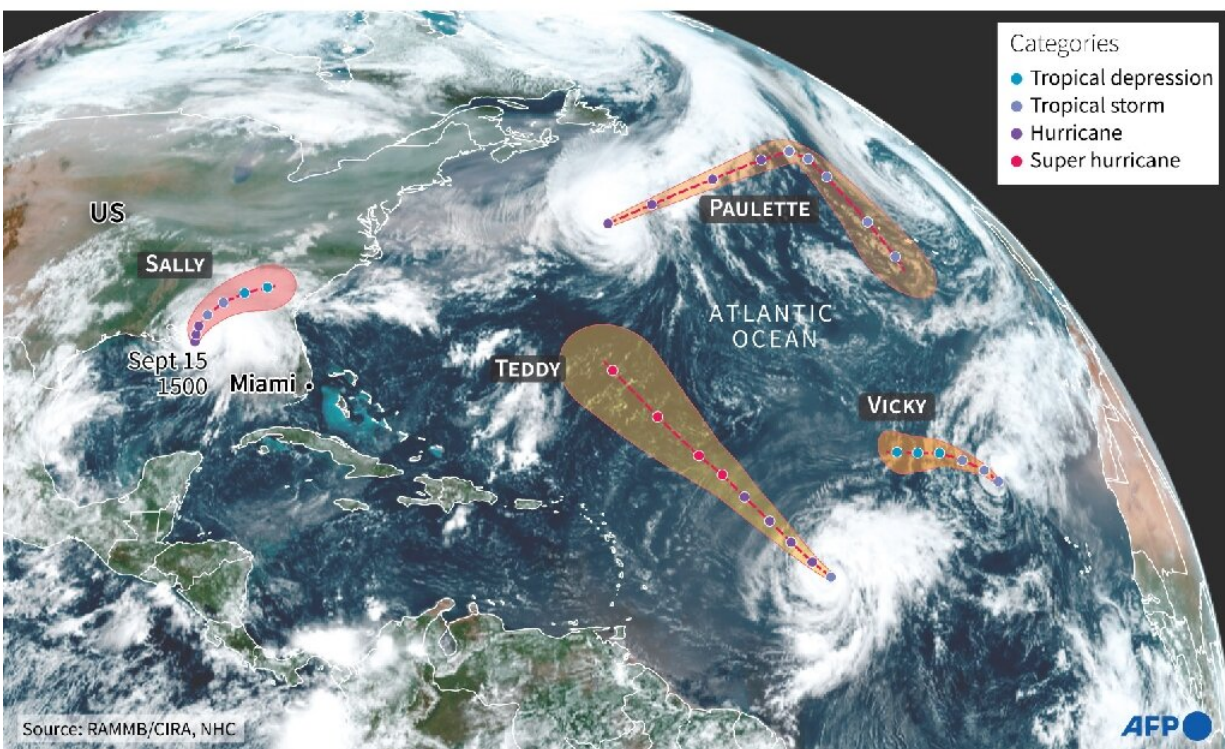
## Record year

"This one is smaller but it's a little bit more direct, but we have it under control," he said. "We have it under watch very strongly."

Earlier, he tweeted: "We are fully engaged with State & Local Leaders to assist the great people of Alabama, Louisiana, and Mississippi."

### Hurricanes and storms active in the Atlantic

NASA satellite image of hurricanes and tropical storms as of September 15 at 1500 GMT



NASA satellite image of hurricanes, Sally and Teddy, and tropical storms, Paulette and Vicky, as of September 15 at 1500 GMT with forecast trajectories by the US National Hurricane Centre.

He urged people in the storm's path to "listen to State and Local Leaders."

Mississippi Governor Tate Reeves had also declared a state of emergency ahead of the approaching storm.

He said the storm surge projections were "worrisome with anywhere from five to eight feet of coastal surge."

Governor John Bel Edwards of Louisiana, which is still recovering after Hurricane Laura made landfall in the state as a Category 4 storm, told residents Monday to be prepared.

"Be smart and be safe," he tweeted.

At a hurricane refuge in Pascagoula, a coastal town in eastern Mississippi, 50-year-old evacuee Cliton Shepherd was hoping the area could avoid the worst.

"I don't think the wind is going to hurt anything, hopefully. I pray that it doesn't. But that's the main thing, you know, hoping and praying for the best, that's all we can do."



Hurricane Sally, seen off the Gulf of Mexico on September 14, 2020, at 1510 GMT

There have been so many tropical storms in the Atlantic this year that the UN's World Meteorological Organization, which names the tempests, is about to run out of names for only the second time in history.

The last time was in 2005, the year Hurricane Katrina devastated New Orleans.

The latest Atlantic [storm](#), Hurricane Paulette, pounded the island of Bermuda on Monday with Category 2 winds and heavy rains, according to the NHC.

The center also said Tropical Storm Teddy, currently positioned in the

mid-Atlantic, was expected to become a [hurricane](#).

© 2020 AFP

Citation: Hurricane Sally gains strength as it nears southern US (2020, September 16) retrieved 24 June 2024 from <https://phys.org/news/2020-09-hurricane-sally-gains-strength-nears.html>

<p>This document is subject to copyright. Apart from any fair dealing for the purpose of private study or research, no part may be reproduced without the written permission. The content is provided for information purposes only.</p>
--