

Most close relatives of birds neared the potential for powered flight but few crossed its thresholds

August 11 2020



The origins of powered flight potential in theropod dinosaurs. A selection of early birds and their closest relatives representing flightless forms and those that neared and passed the thresholds of powered flight potential. Credit: Julius T Csatonyi / Michael Pittman

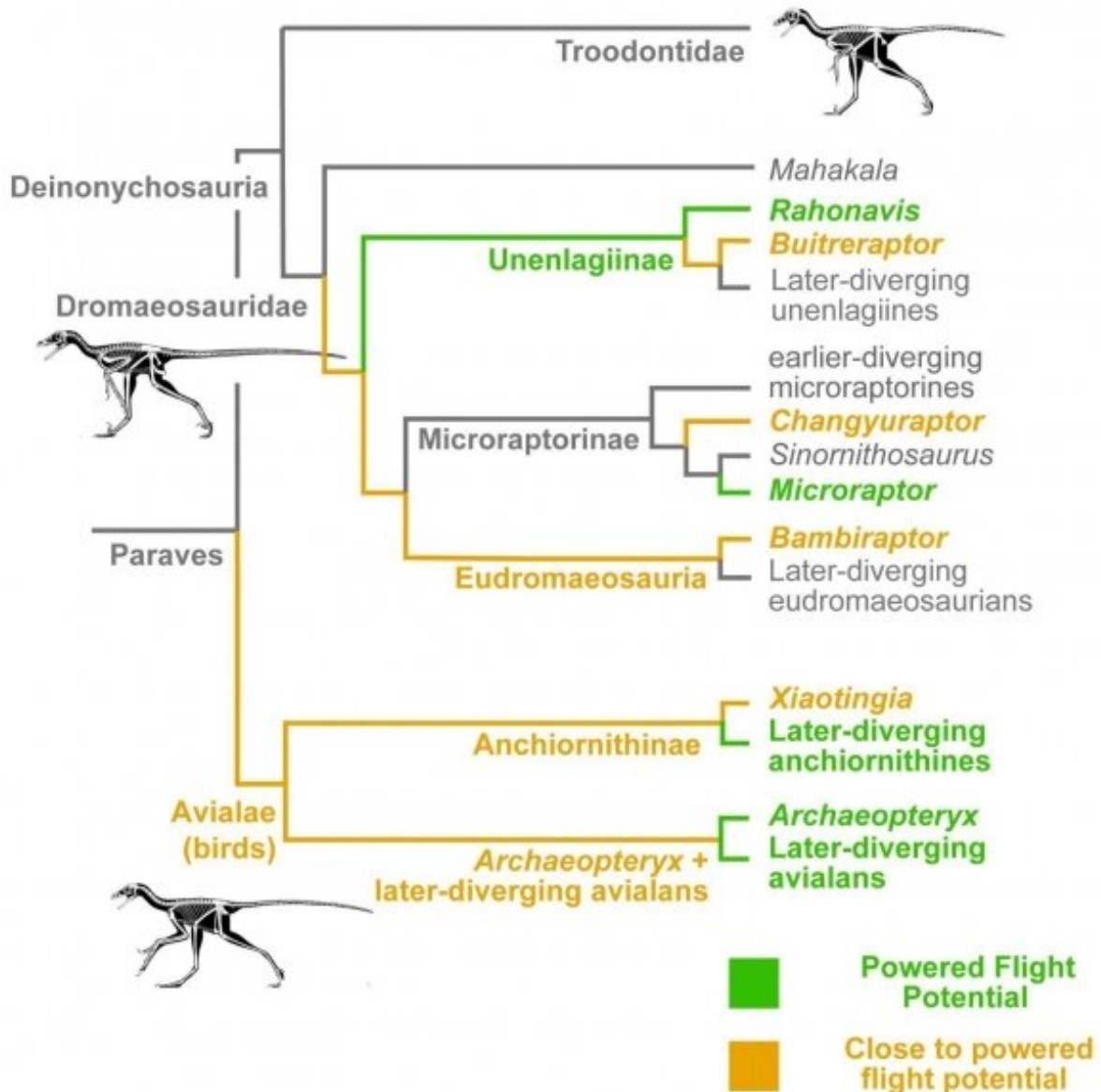
Uncertainties in the evolutionary tree of birds and their closest relatives

have impeded deeper understanding of early flight in theropods, the group of dinosaurs that includes birds. To help address this, an international study led by HKU Research Assistant Professor Dr. Michael Pittman (Vertebrate Paleontology Laboratory, Division of Earth and Planetary Science & Department of Earth Sciences) and co-first-authored by his former Postdoctoral Fellow Dr. Rui Pei (now an Associate Professor at the Institute of Vertebrate Paleontology and Paleoanthropology, Beijing), produced an updated evolutionary tree of early birds and their closest relatives to reconstruct powered flight potential, showing it evolved at least three times. Many ancestors of the closest bird relatives neared the thresholds of powered flight potential, suggesting broad experimentation with wing-assisted locomotion before flight evolved. The 10-researcher, five-country team published their findings in *Current Biology*.

"Our revised evolutionary tree supports the traditional relationship of dromaeosaurid (raptors) and troodontid theropods as the closest relatives of birds. It also supports the status of the controversial anchiornithine theropods as the earliest birds," said Dr. Pei. With this improved [evolutionary tree](#), the team reconstructed the potential of bird-like theropods for power flight, using proxies borrowed from the study flight in living birds. The team found that the potential for powered flight evolved at least three times in theropods: once in birds and twice in dromaeosaurids.

"The capability for gliding flight in some dromaeosaurids is well established so us finding at least two origins of powered flight potential among dromaeosaurids is really exciting," said Dr. Pittman. Crucially, the team found that many ancestors of bird relatives neared the thresholds of powered flight potential. "This suggests that [theropod](#) dinosaurs broadly experimented with the use of their feathered wings before flight evolved, overturning the paradigm that this was limited to a much more exclusive club," added Dr. Pittman.

This study is the latest in the Vertebrate Paleontology Laboratory's long-term research into the evolution of early birds and their closest relatives. Asked about future plans, Dr. Pittman replied: "We have helped to better constrain the broader functional landscape of theropods just before flight evolved and in its earliest stages. We plan to now focus on the dromaeosaurids and early [birds](#) that we have shown to have the potential for powered [flight](#) to improve our understanding of what it took to fly and why."



Graphical abstract showing a simplified version of the revised evolutionary tree of birds (Avialae) and their closest relatives (non-avian theropod dinosaurs) and the many ancestors that came close to powered flight potential (orange) but the few that achieved it (green; at least three times: once in early birds and twice among the dromaeosaurids ('raptors')). Credit: Michael Pittman and co-authors.

More information: Rui Pei et al. Potential for Powered Flight Neared by Most Close Avialan Relatives, but Few Crossed Its Thresholds, *Current Biology* (2020). [DOI: 10.1016/j.cub.2020.06.105](https://doi.org/10.1016/j.cub.2020.06.105)

Provided by The University of Hong Kong

Citation: Most close relatives of birds neared the potential for powered flight but few crossed its thresholds (2020, August 11) retrieved 28 June 2024 from <https://phys.org/news/2020-08-relatives-birds-neared-potential-powered.html>

This document is subject to copyright. Apart from any fair dealing for the purpose of private study or research, no part may be reproduced without the written permission. The content is provided for information purposes only.