

Douglas downgraded to tropical storm after skirting Hawaii

July 28 2020, by Ronen Zilberman



A cyclist rides along an empty Waikiki Beach in Honolulu, Hawaii as Hurricane Douglas veers northward, sparing Oahu from a direct hit

Hurricane Douglas was downgraded on Monday as it narrowly avoided the Hawaiian coast, after fears it would become only the third storm of its size to make landfall on the Pacific island chain since records began.

The [tropical storm](#) was moving westward past the Hawaiian islands, packing winds of 70 miles (110 kilometers) per hour, according to the National Hurricane Center.

It is rare for [severe storms](#) to make landfall in Hawaii, which has been hit by hurricanes just twice in its [modern history](#)—Dot in 1959 and Iniki in 1992.

Although Douglas stayed off the coast, it still made history—no hurricane has ever taken a path closer to Oahu island since the government started keeping records in the 1950s, according to the Central Pacific Hurricane Center.

The National Weather Service said the storm's center passed just 25 miles north of Oahu. The last [hurricane](#) to make such a close approach was Dot, passing 60 miles southwest.

Evacuation centers had been opened over the weekend in Honolulu, a city of 350,000, but fears of coronavirus spread made them "a last resort," the city's mayor Kurt Caldwell said.

"If you are sheltering away from home today, please remember that #COVID19 is not taking a break for the storm," Caldwell tweeted Sunday evening.



People line up to shelter at the Hawaii Convention Center, seeking a safe place to weather Hurricane Douglas in Honolulu, Hawaii, on July 26, 2020

Large swells generated by Douglas were expected to hit the [islands](#) into Monday, raising the risk of damage from high surf to shoreline property.

Hurricane conditions were expected across northern Kauai, including up to six inches of rain, which posed a threat of flash floods and landslides.

Heavy rains, flooding in Mexico

Hurricane Hanna meanwhile was downgraded to a tropical depression, bringing heavy rain and the threat of flash floods to northeastern Mexico after lashing Texas.

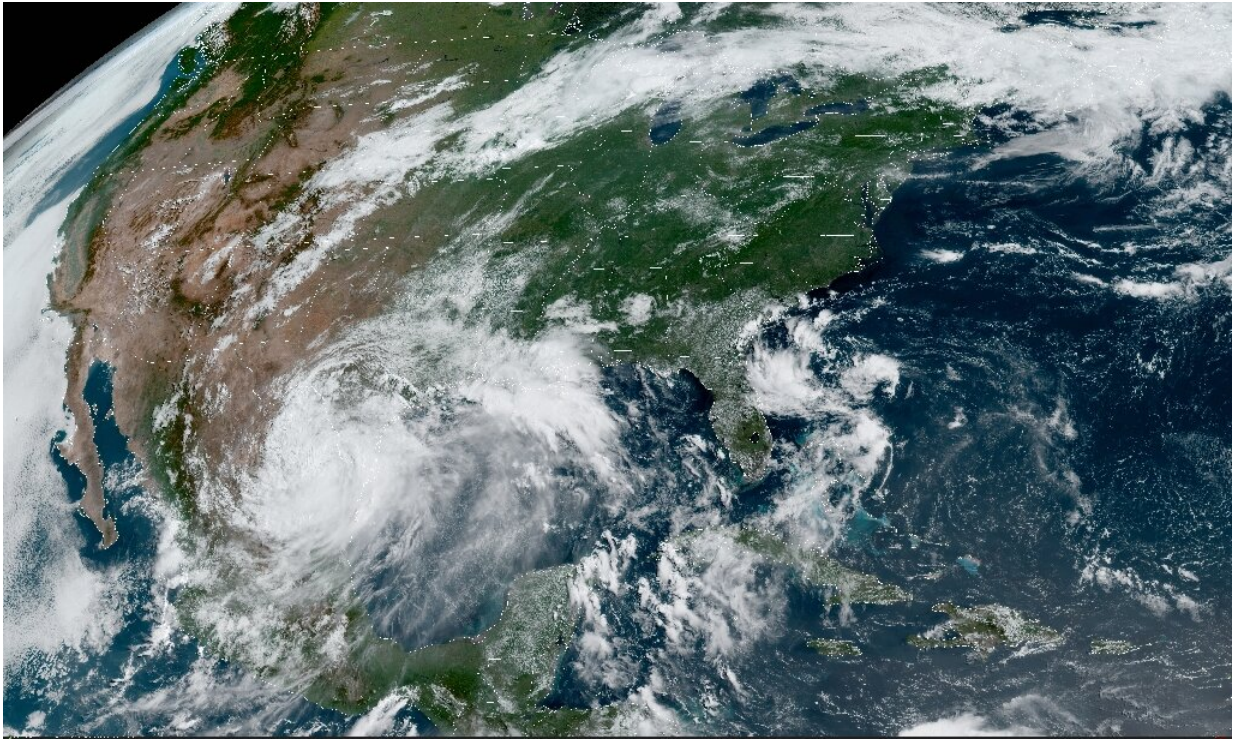
Civil protection head David Leon Romero said the storm had "left a lot of rain in Mexican territory," with landslides, flooding and power outages across the region.

Nearly 1,200 people were riding out the storm in temporary shelters and 80 had been rescued from dangerous river flows, he added.

Mexico reported at least two dead and four missing on Monday evening after Hanna swept through three northeastern states, the national coordinator of civil protection said.



Kite surfers enjoy increasing winds ahead of Hurricane Douglas in the windward town of Kailua on the island of Oahu, Hawaii on July 26, 2020



This RAMMB/NOAA satellite image obtained on June 26, 2020 at 15:16 UTC shows Hurricane Hanna in the Gulf of Mexico

Hanna was still packing winds of around 25 miles (35 kilometers) an hour as of early Monday, the NHC said.

Damage in Texas appeared limited after Hanna's Saturday arrival on Padre Island, a 110-mile-long barrier island off the state coast.

Images captured by CBS showed roads and a caravan park in the Texas coastal city of Corpus Christi strewn with debris and downed trees.

Some motorists braved flooded roads, while one hardy [storm](#)-watcher was seen calmly taking pictures of the beach from a wind-swept

promenade.

© 2020 AFP

Citation: Douglas downgraded to tropical storm after skirting Hawaii (2020, July 28) retrieved 15 May 2024 from <https://phys.org/news/2020-07-douglas-downgraded-tropical-storm-skirting.html>

This document is subject to copyright. Apart from any fair dealing for the purpose of private study or research, no part may be reproduced without the written permission. The content is provided for information purposes only.