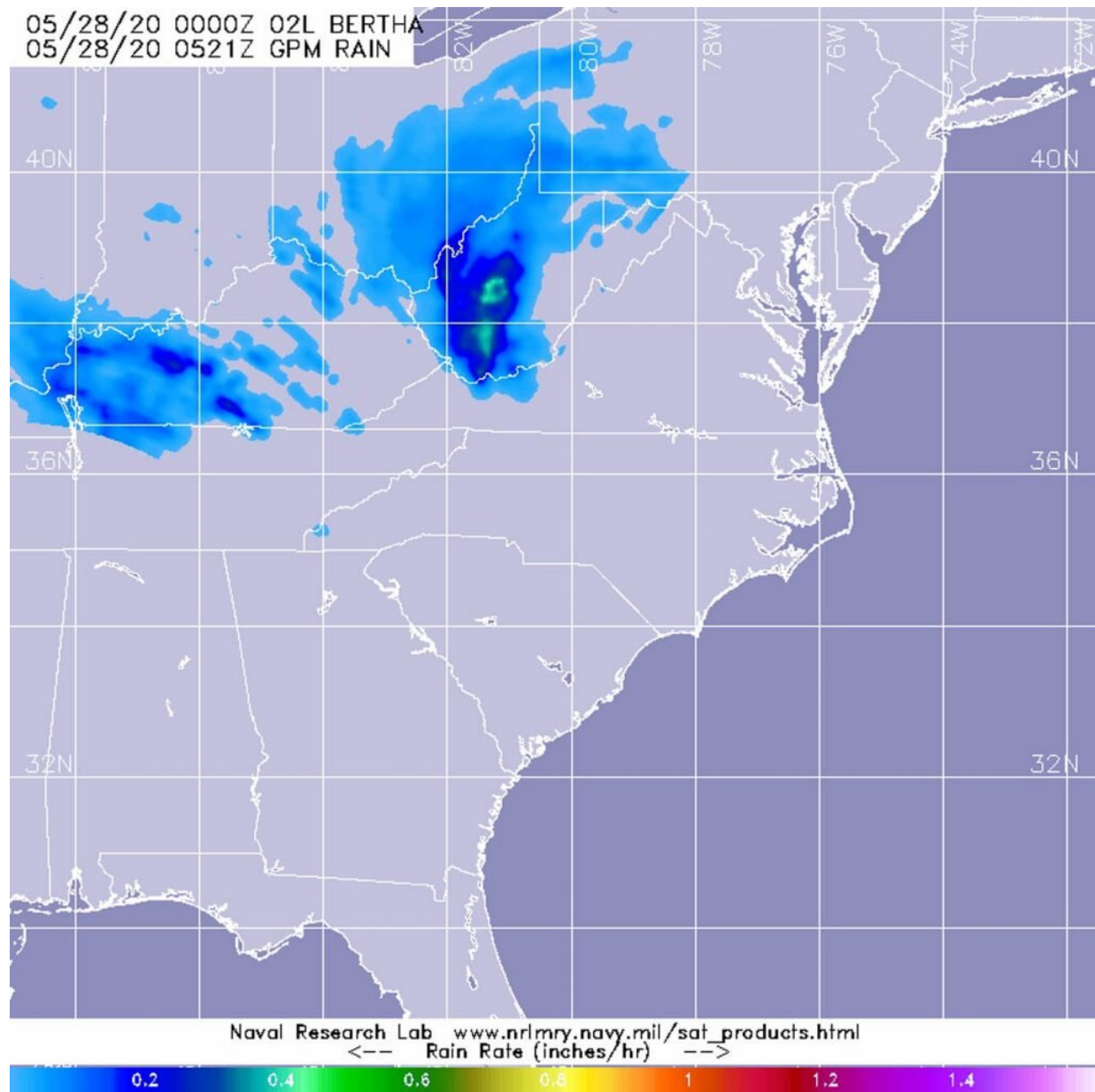


# NASA looks at Inland Rainfall from Post Tropical Cyclone Bertha

May 28 2020, by Rob Gutro



The GPM's core satellite passed over Bertha and analyzed its rainfall rates on May 28 at 1:21 a.m. EDT (0521UTC). GPM found heaviest rainfall over south central West Virginia, where rain was falling at rates of 1 inch (25 mm) per hour. A large area of light rain northwest of the center was falling at around 0.2 inches (less than 5 millimeters) per hour. Credit: NASA/NRL

NASA's GPM core satellite analyzed rainfall generated from post-tropical cyclone Bertha as it continues to move toward the Great Lakes.

Bertha formed into a [tropical storm](#) on May 27, about 30 miles off the South Carolina coast. By 9:30 a.m. EDT, Bertha made landfall along the coast of South Carolina, east of Charleston. Data from NOAA and CORMP buoys showed that maximum sustained winds increased to near 50 mph (80 kph) before landfall. By 2 p.m. EDT, Bertha weakened to a [tropical depression](#) and heavy rainfall spread across the Carolinas. By 11 p.m. EDT, heavy rainfall spread across western North Carolina and southwest Virginia into West Virginia. At that time, the center of Bertha was located about 95 miles (150 km) south-southwest of Roanoke, Virginia. By May 28, Bertha had become a post-tropical cyclone.

A Post-Tropical Storm is a generic term for a former tropical cyclone that no longer possesses sufficient tropical characteristics to be considered a tropical cyclone. Former tropical cyclones that have become fully extratropical, subtropical, or remnant lows, are three classes of post-tropical cyclones. In any case, they no longer possess sufficient tropical characteristics to be considered a tropical cyclone. However, post-tropical cyclones can continue carrying [heavy rains](#) and high winds.

On May 28, flash flood watches were in effect for central West Virginia

and a small part of coastal North Carolina through early morning. NOAA's National Weather Service Weather Prediction Center in College Park Md. noted, "Bertha is expected to produce total rain accumulations of around one inch from West Virginia through eastern Ohio, southern and western Pennsylvania and far western New York, and 1 to 2 inches from South Carolina across eastern North Carolina into southeast Virginia. Isolated maximum storm total amounts of 4 inches are possible in southern Pennsylvania and parts of the Carolinas and southeast Virginia. This rainfall may produce life threatening flash flooding, aggravate and prolong ongoing river flooding, and produce rapid out of bank rises on smaller rivers."

The Global Precipitation Measurement mission or GPM satellite provided a look at Bertha's rainfall rates on May 28 at 1:21 a.m. EDT (0521UTC). GPM found heaviest rainfall over south central West Virginia, where rain was falling at rates of 1 inch (25 mm) per hour. A large area of light rain northwest of the center was falling at around 0.2 inches (less than 5 millimeters) per hour.

At 5 a.m. EDT (0900 UTC), the center of Post-Tropical Cyclone Bertha was located near latitude 38.3 degrees north and longitude 80.8 degrees west, about 80 miles (130 km) north-northwest of Roanoke, Virginia. The post-tropical [cyclone](#) is moving toward the north near 28 mph (44 kph) and this motion is expected to continue through midday Thursday, May 28, followed by a turn to the north-northeast. Maximum sustained winds are near 25 mph (35 kph) with higher gusts. The estimated minimum central pressure is 1012 millibars.

Bertha is expected to weaken and dissipate by Thursday evening as it crosses the eastern Great Lakes.

Tropical cyclones/hurricanes are the most powerful weather events on Earth. NASA's expertise in space and [scientific exploration](#) contributes

to essential services provided to the American people by other federal agencies, such as hurricane weather forecasting.

GPM is a joint mission between NASA and the Japan Aerospace Exploration Agency, JAXA.

Provided by NASA's Goddard Space Flight Center

Citation: NASA looks at Inland Rainfall from Post Tropical Cyclone Bertha (2020, May 28)  
retrieved 10 April 2024 from

<https://phys.org/news/2020-05-nasa-inland-rainfall-tropical-cyclone.html>

<p>This document is subject to copyright. Apart from any fair dealing for the purpose of private study or research, no part may be reproduced without the written permission. The content is provided for information purposes only.</p>
--