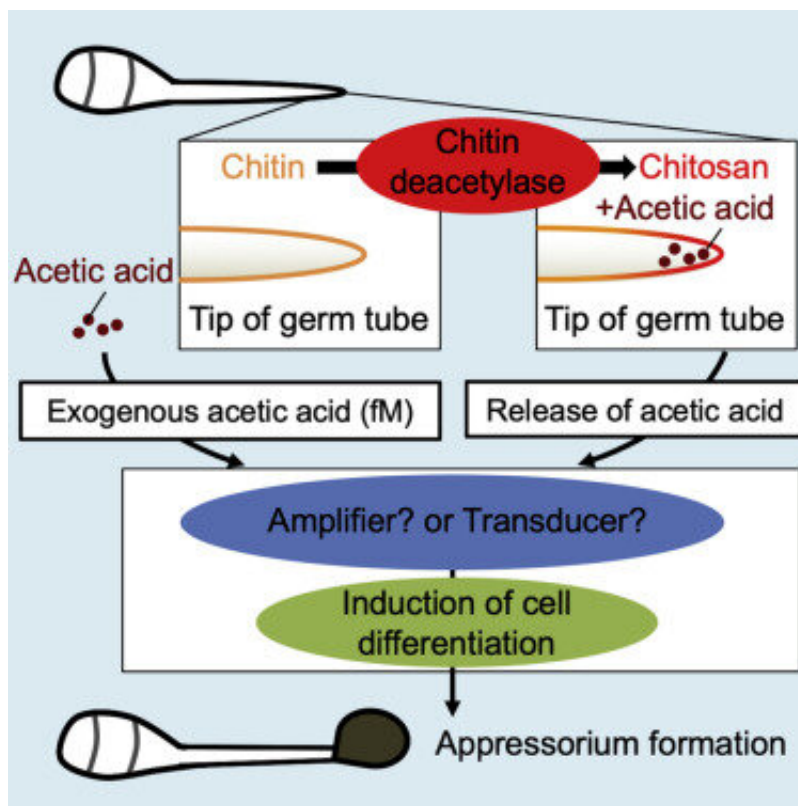


How the rice blast fungus 'eats' its own cell wall to launch an attack

January 8 2020



During infection in rice blast fungus, chitin from its cell wall breaks down into chitosan and acetic acid. This process stimulates cell differentiation in the host plant, leading to appressorium formation, which then facilitates the infection process. Credit: Dr. Takashi Kamakura

All living organisms respond and adapt to changes in their environment. These responses are sometimes so significant that they cause alterations

in the internal metabolic cycles of the organism—a process called "metabolic switching." For example, rice blast fungus—a pathogenic fungal species that causes the "rice blast" infection in rice crops—switches to the "glyoxylate cycle" when the nutrient source starts to deplete. Another response to environmental change is called "cell differentiation," where cells switch to another type altogether. In rice blast fungus, for example, the fungal cells differentiate and generate a large amount of pressure on the cell wall, causing the fungus to develop a specialized structure called "appressorium," which ultimately facilitates the infection. Such methods of adaptation have been seen across various organisms, but exactly how they occur is not very clear yet.

In a recent study published in *iScience*, a team of researchers at Tokyo University of Science, led by Prof. Takashi Kamakura, found for the first time that extremely low concentrations of acetic [acid](#) alter cellular processes in [rice blast](#) fungus. Their research was based on the fact that Cbp1—a protein that can remove acetyl groups from chitin (the main component of the [cell wall](#) of fungi)—plays a huge role in appressorium formation by converting chitin into chitosan and releasing acetic acid. Explaining the objective of the study, Prof. Kamakura says, "Metabolic switching in nutrient-deficient environments depends on changes in the nutrient source, but its mechanism has remained poorly understood until now. Since chitin was known to induce a subsequent resistance response ([immune response](#)), we speculated that Cbp1 functions to escape recognition from plants. Also, because the enzymatic activity of Cbp1 affects [cell differentiation](#), we hypothesized that the reaction product of chitin deacetylation by Cbp1 may be a signal for cell differentiation."

For their study, the scientists used a mutant form of the fungus that did not produce Cbp1 and thus could not form appressorium as it was unable to produce acetic acid from chitin. The scientists observed that when minuscule concentrations of acetic acid, even as low as a hundred molecules per fungal spore, were added, appressorium formation was

restored in the mutants. This implied that acetic acid could act as a chemical signal to trigger cell differentiation. Then, to better understand the role of acetic acid in the glyoxylate cycle, the researchers focused on an enzyme unique to this metabolic pathway: isocitrate lyase. They found that the mutant forms of the fungus had much lower levels of this enzyme, meaning that they could not switch to the glyoxylate cycle. But, as seen before, the addition of acetic acid at an extremely low concentration was enough to restore normal levels of the enzyme and thus induce appressorium formation. "Our study is the first to reveal the novel role of acetic acid in metabolic switching and cell differentiation in eukaryotic [cells](#)," remarks Prof. Kamakura.

Interestingly, these findings indicate that using chitin molecules from their own cell wall could be a survival strategy used by several types of bacteria and fungi. This would allow them to thrive in environments deprived of nutrients—such as on the surface of a host leaf—and avoid host defense/immune mechanisms. Acetic acid could then be used both as a carbon source and as a signal to trigger metabolic switching and cell differentiation. Prof. Kamakura explains, "The use of acetic acid obtained from a pathogen's own cell wall for the activation of the glyoxylate cycle is perhaps a general mechanism in various infection processes."

The finding that extremely low concentrations of a small, simple molecule like [acetic acid](#) could induce significant changes in cellular processes is unprecedented and was only known before for certain hormones in animals. Understanding this type of inter-species chemical interactions could prove to be immensely valuable in agriculture, bioengineering, and medicine, to name a few areas. Prof. Kamakura concludes, "It is yet to be found whether this phenomenon is common to other organisms. But, since metabolites such as butyric acid derived from human intestinal bacteria are involved in immune cell activation and cancer progression, our findings have implications in a wide variety

of fields, including medicine and agriculture."

More information: Misa Kuroki et al, Extremely Low Concentrations of Acetic Acid Stimulate Cell Differentiation in Rice Blast Fungus, *iScience* (2019). [DOI: 10.1016/j.isci.2019.100786](https://doi.org/10.1016/j.isci.2019.100786)

Provided by Tokyo University of Science

Citation: How the rice blast fungus 'eats' its own cell wall to launch an attack (2020, January 8) retrieved 10 April 2024 from <https://phys.org/news/2020-01-rice-blast-fungus-cell-wall.html>

<p>This document is subject to copyright. Apart from any fair dealing for the purpose of private study or research, no part may be reproduced without the written permission. The content is provided for information purposes only.</p>
--