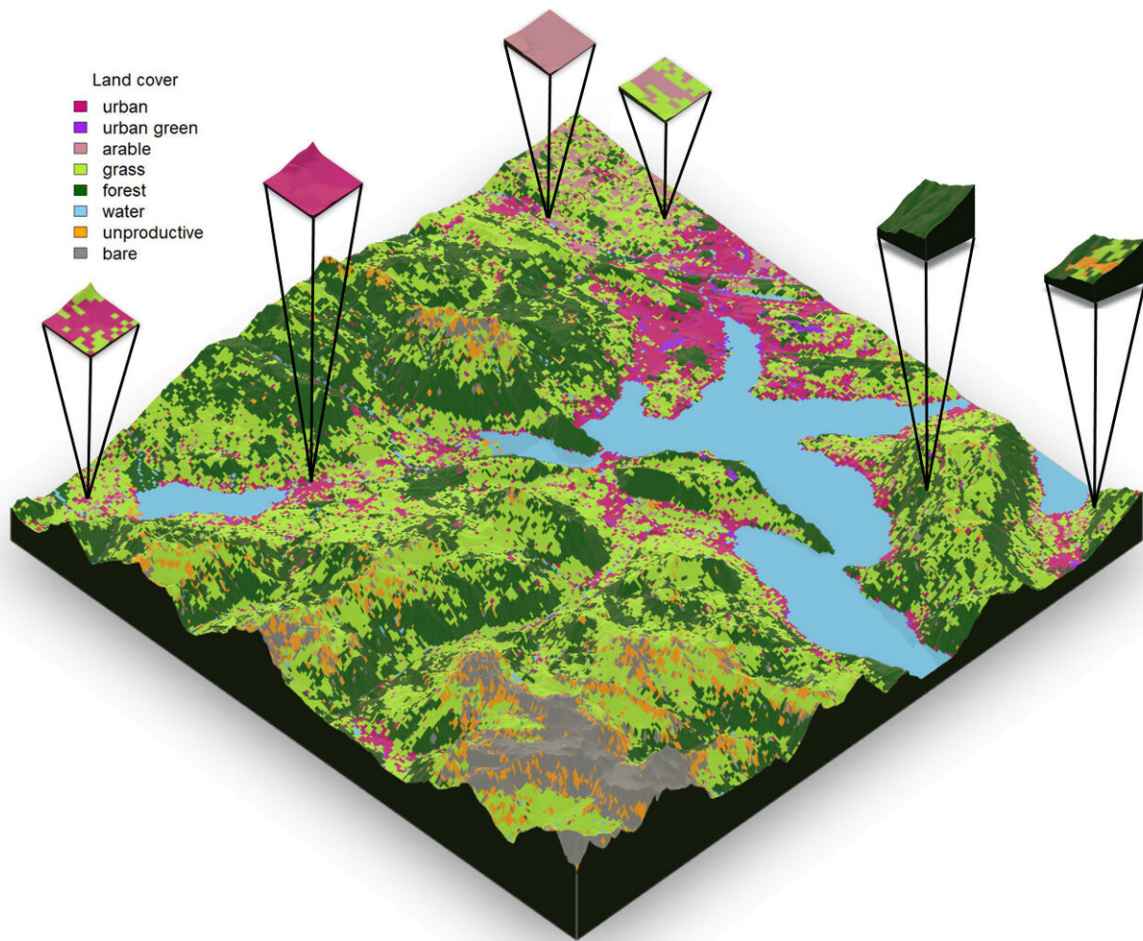


Improved functioning of diverse landscape mosaics

January 9 2020, by Prof. Dr. Pascal A. Niklaus



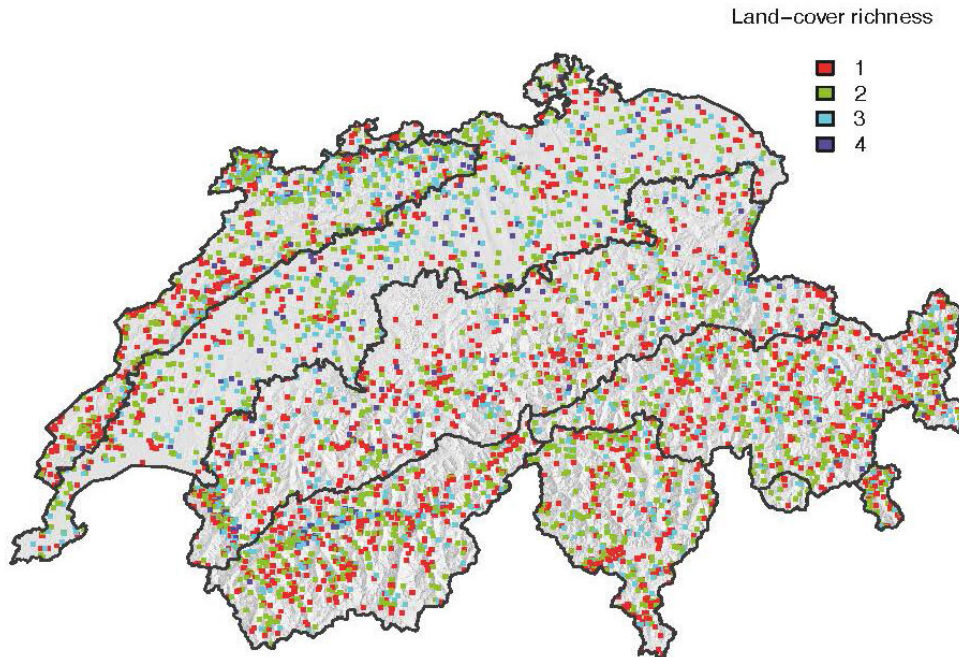
Study design: landscapes with different land cover. Credit: UZH

It is well-established that biodiverse ecosystems generally function better than monocultures. Ecologists at the University of Zurich have now shown that the same is true on a larger scale: Having a mix of different land-covers including grassland, forest, urban areas and water bodies improves the functioning and stability of a landscape—irrespective of the plant species diversity, region and climate.

To date, [biodiversity research](#) primarily focused on the number of plant species present in ecosystems. "Most studies so far have used small, artificially established study plots. However, real-world landscapes are much more complex, and, in addition to natural areas, also contain human-dominated elements such as [arable land](#) and urban areas," says Pascal Niklaus, professor at the Department of Evolutionary Biology and Environmental Studies at the University of Zurich (UZH).

5,000 Swiss landscapes analyzed

A research team led by Niklaus and part of the Research Priority Program "Global Change and Biodiversity" investigated how different land-cover areas affect vegetation growth in large landscapes. Using aerial imagery, they assessed land-cover in 4,974 landscape plots from all regions in Switzerland. In addition to green areas such as grassland and forest they also considered human-dominated areas including arable fields and settlements. In parallel, they used satellite data to determine plant productivity in these landscapes over a period of 17 years.



Map: the approx. 5,000 Swiss landscape plots examined. Credit: UZH

Land-cover mixtures are more productive and stable

"We found that landscapes consisting of a mosaic of different land uses were more productive than the average landscape with uniform use," Niklaus summarizes. This positive effect of land-use diversity and productivity held over many regions, climatic conditions and altitude ranges. Landscape mosaics also showed a temporally more stable productivity. In other words, more diverse landscapes are able to mitigate effects of inter-annual climate variation.

Different mechanisms are at play

The positive effects of land-use diversity were unrelated to the number of plant species present in these landscapes. This indicates that areas

with different land uses interact and improve the functioning of the entire [landscape](#), similar to the way in which plant species interact in a small patch of vegetation and thereby improve the functioning of the plant community. "In such large landscapes, novel mechanisms must be at play that do not operate in the small study plots traditionally examined in biodiversity experiments," Jacqueline Oehri, first author of the study, says. The specific nature of these mechanisms is the subject of further investigations. The authors speculate that, for example, [urban areas](#) and [water bodies](#) affect climatic conditions in their surroundings, and that this might improve the productivity of vegetation in these areas.

Strategies for regional planning and landscape management

The way in which different land uses are spatially interwoven thus promotes the functioning of landscapes, in addition to the established beneficial effects of high species diversity. The study's novel approach enables landscapes to be analyzed on a scale that is relevant for regional planning and conservation policies. However, Niklaus emphasizes that "the fact that mixed landscapes function better should not be understood to mean that [natural areas](#) should be fragmented by expanding urban settlements."

More information: Jacqueline Oehri et al. Terrestrial land-cover type richness is positively linked to landscape-level functioning, *Nature Communications* (2020). [DOI: 10.1038/s41467-019-14002-7](https://doi.org/10.1038/s41467-019-14002-7)

Provided by University of Zurich

Citation: Improved functioning of diverse landscape mosaics (2020, January 9) retrieved 23

April 2024 from <https://phys.org/news/2020-01-functioning-diverse-landscape-mosaics.html>

This document is subject to copyright. Apart from any fair dealing for the purpose of private study or research, no part may be reproduced without the written permission. The content is provided for information purposes only.