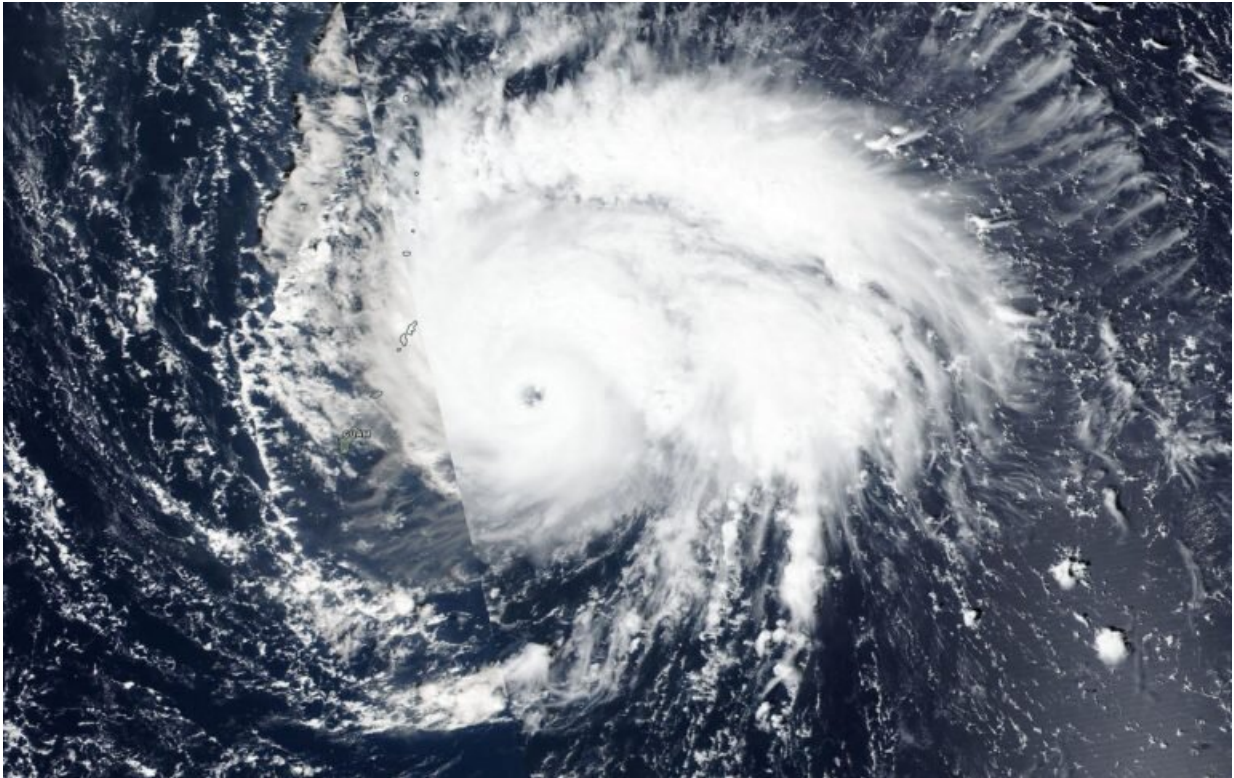


NASA finds Typhoon Bualoi rapidly intensified

October 21 2019, by Rob Gutro



On Oct. 21, 2019, NASA-NOAA's Suomi NPP satellite passed over Typhoon Bualoi after it rapidly intensified in the Northwestern Pacific Ocean near the Marianas Islands. Credit: NASA Worldview, Earth Observing System Data and Information System (EOSDIS)

Typhoon Bualoi rapidly intensified over 24 hours and quickly developed

an eye and powerful thunderstorms. On Oct. 21, the eye of Typhoon Bualoi was just over 50 miles from the island of Saipan when NASA-NOAA's Suomi NPP satellite passed overhead. Saipan is the largest island of the Northern Mariana Islands. The Marianas are a commonwealth of the United States in the western Pacific Ocean.

The Visible Infrared Imaging Radiometer Suite (VIIRS) instrument aboard NASA-NOAA's Suomi NPP satellite provided forecasters with an image of Bualoi revealing a clear eye surrounded by powerful thunderstorms. The Joint Typhoon Warning Center (JTWC) noted at 11 a.m. EDT on Oct. 21, that Tropical Depression 22W (Bualoi) rapidly intensified by 35 knots (40 mph/65 kph) over the past 24 hours from 70 knots (81 mph/129 kph) at 8 a.m. EDT (1200 UTC) on Oct. 20 to the current intensity of 105 knots (120 mph/194 kph).

JTWC also noted "Animated enhanced infrared imagery depicts a 15 nautical mile round eye embedded in a compact, asymmetric convective core."

Satellite imagery helps forecasters understand if a storm is organizing or weakening. The shape of a tropical cyclone provides forecasters with an idea of its organization and strength, and NASA-NOAA's Suomi NPP satellite provided a visible image of the storm to forecasters.

Bualoi formed on Oct. 19 as Tropical Depression 22W and strengthened into a tropical storm later that day. It became a [typhoon](#) on Oct. 20.

Warnings and Watches

On Monday, October 21, 2019, the National Weather Service in Tiyan, Guam noted that a Typhoon Warning remains in effect for Tinian and Saipan. Damaging winds of 39 mph or more are expected through this morning. A Tropical Storm Watch remains in effect for the islands of

Agrihan, Pagan and Alamagan in the Northern Mariana Islands. Damaging winds of 39 mph or higher are possible today.

Status of Typhoon Bualoi on Oct. 21

At 11 a.m. EDT (1 a.m. CHST, local time/1500 UTC), Typhoon Bualoi was centered near latitude 15.8 degrees north and longitude 146.4 degrees east. That puts the eye about 65 miles northeast of Saipan, 75 miles northeast of Tinian, 130 miles south-southeast of Alamagan, and about 195 miles northeast of Guam. Maximum sustained winds have increased to 120 mph. Bualoi is forecast to intensify through Wednesday.

Bualoi is moving northwest at 12 mph. It is expected to maintain this general course and speed over the next 24 hours.

Hurricanes are the most powerful weather event on Earth. NASA's expertise in space and [scientific exploration](#) contributes to essential services provided to the American people by other federal agencies, such as hurricane weather forecasting.

More information: For updated forecasts, visit:
<https://www.weather.gov/gum/Cyclones>

Provided by NASA's Goddard Space Flight Center

Citation: NASA finds Typhoon Bualoi rapidly intensified (2019, October 21) retrieved 1 May 2024 from <https://phys.org/news/2019-10-nasa-typhoon-bualoi-rapidly.html>

This document is subject to copyright. Apart from any fair dealing for the purpose of private study or research, no part may be reproduced without the written permission. The content is

provided for information purposes only.