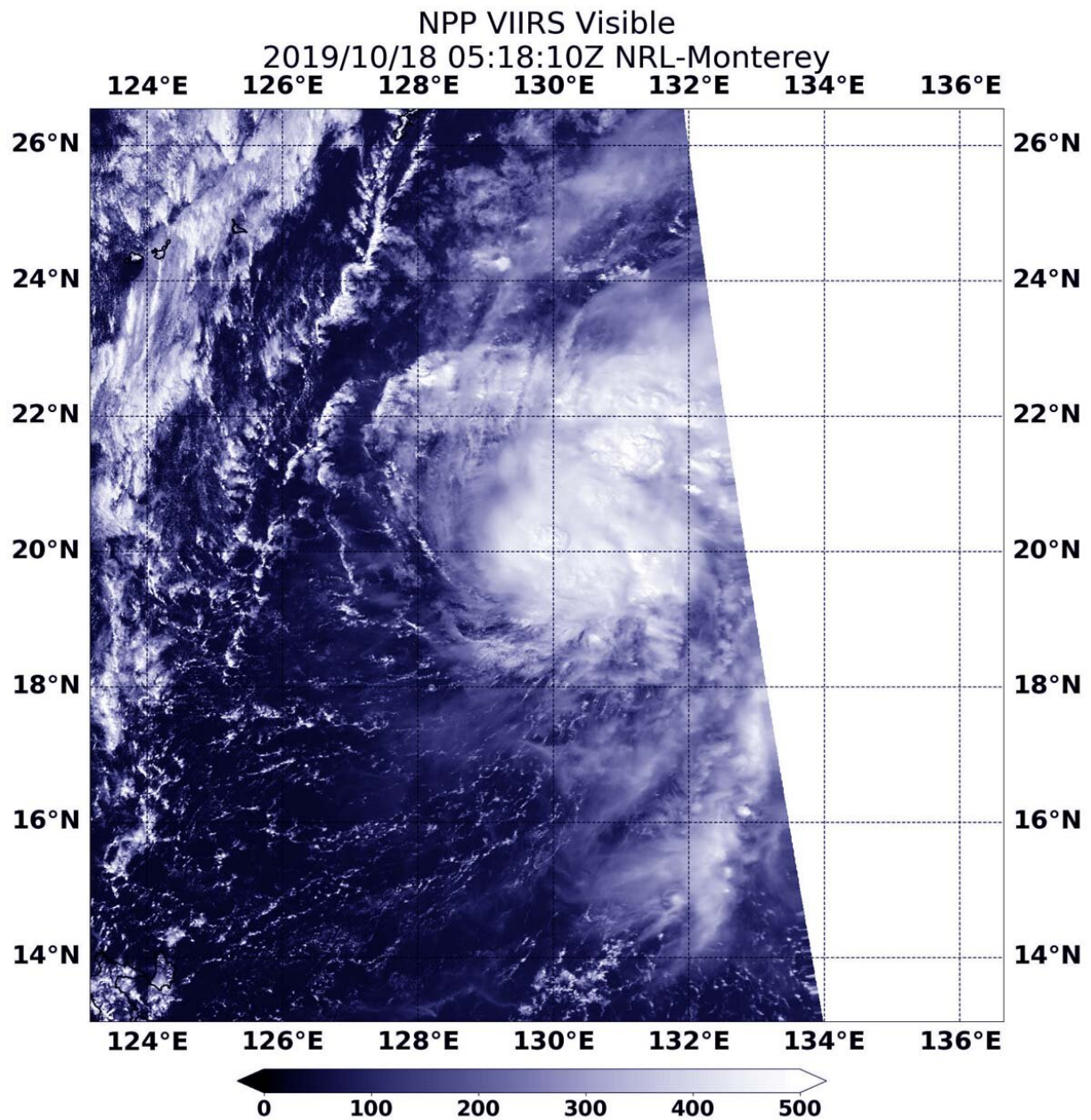


NASA-NOAA satellite finds Tropical Storm Neoguri consolidating

October 18 2019, by Rob Gutro



NASA-NOAA's Suomi NPP satellite passed over Tropical Storm Neoguri on Oct. 18 at 1:18 a.m. EDT (0518 UTC), and revealed powerful storms around the low-level center. The image showed strong bands of thunderstorms developing east of the center. Credit: NASA /NRL

NASA-NOAA's Suomi NPP satellite provided forecasters at the Joint Typhoon Warning Center with a visible image of Tropical Storm Neoguri that showed it had become more organized over the previous 24 hours.

Tropical Depression 21W lacked organization for a couple of days until early on Oct. 18 when the Suomi NPP satellite passed overhead and showed it had consolidated. The storm had strengthened from a depression to a [tropical storm](#) on Oct. 18.

The Visible Infrared Imaging Radiometer Suite (VIIRS) instrument aboard Suomi NPP provided a visible image of Neoguri that revealed powerful storms circled the low-level center. The image showed that bands of thunderstorms were also developing around the eastern quadrant.

On Oct. 19 at 11 a.m. EDT (1500 UTC) Tropical Storm Neoguri, known locally in the Philippines as Perla, was located near latitude 20.4 degrees north and longitude 129.2 degrees east. That is about 374 nautical miles south-southeast of Kadena Air Base, Okinawa Island, Japan. It was moving to the northwest and had maximum sustained winds near 45 knots (52 mph/83 kph).

Forecasters at the Joint Typhoon Warning Center expect Neoguri will strengthen to 50 knots (58 mph/92 kph), then weaken before becoming

extra-tropical on its northward track.

Hurricanes are the most powerful weather event on Earth. NASA's expertise in space and [scientific exploration](#) contributes to essential services provided to the American people by other [federal agencies](#), such as hurricane weather forecasting.

Provided by NASA's Goddard Space Flight Center

Citation: NASA-NOAA satellite finds Tropical Storm Neoguri consolidating (2019, October 18)
retrieved 10 April 2024 from

<https://phys.org/news/2019-10-nasa-noaa-satellite-tropical-storm-neoguri.html>

<p>This document is subject to copyright. Apart from any fair dealing for the purpose of private study or research, no part may be reproduced without the written permission. The content is provided for information purposes only.</p>
--