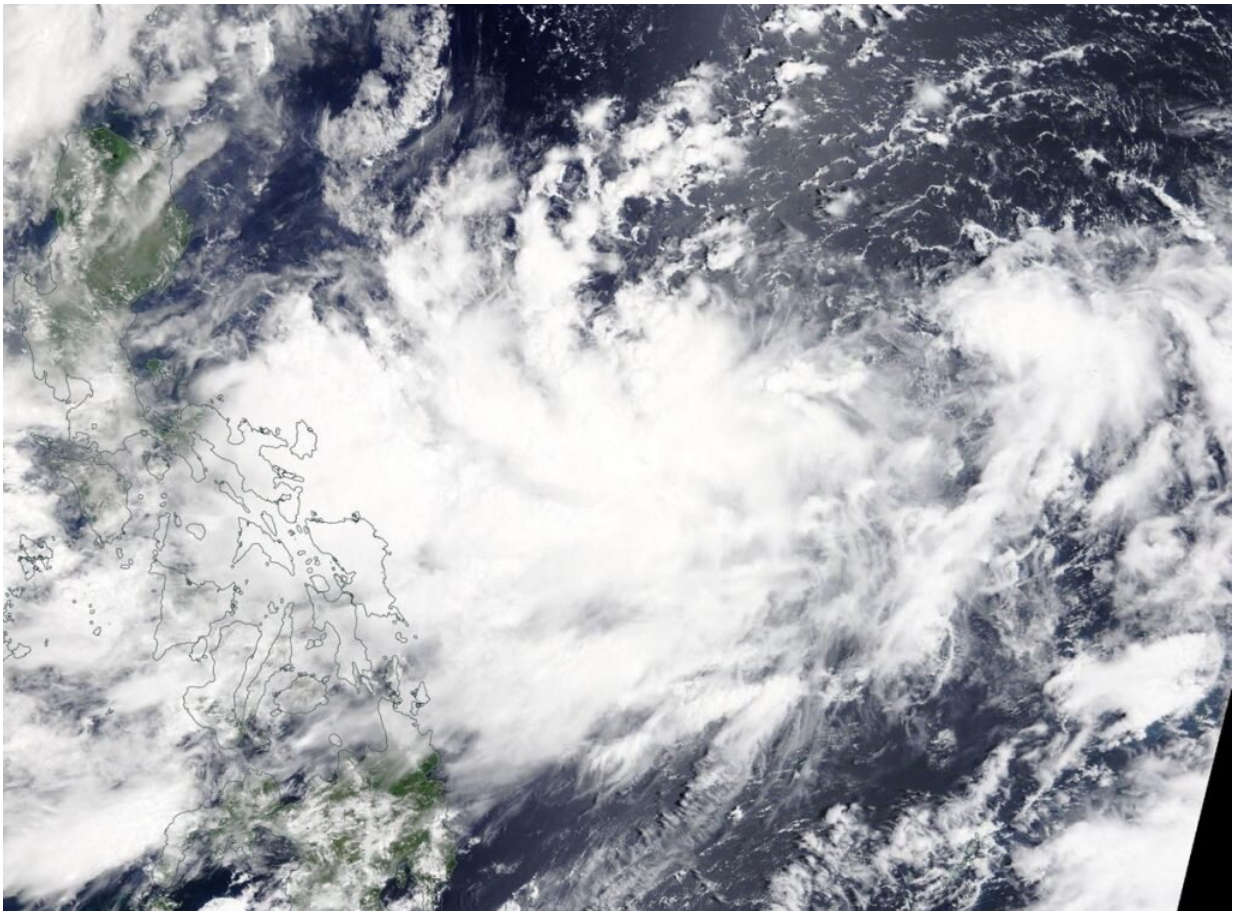


NASA finds Tropical Depression Bailu forms east of Philippines

August 22 2019, by Rob Gutro



On Aug. 20, 2019, the MODIS instrument aboard NASA's Terra satellite provided a visible image of Tropical Depression Bailu in the Northwestern Pacific Ocean. Credit: NASA Worldview, Earth Observing System Data and Information System (EOSDIS)

NASA's Terra satellite passed over the Northwestern Pacific Ocean and captured an image of newly developed Tropical Depression Bailu, east of the Philippines.

On Aug. 20, 2019, the Moderate Resolution Imaging Spectroradiometer or MODIS instrument aboard NASA's Terra satellite provided a visible image of Bailu in the Philippine Sea. The [storm](#) appeared somewhat elongated.

At 11 a.m. EDT (1500 UTC), the center of Bailu was located near latitude 15.9 degrees north and longitude 130.7 degrees east. Bailu was about 674 nautical miles south-southwest of Kadena Air Base, Okinawa, Japan. Bailu was moving to the northwest and had maximum sustained winds near 30 knots (34.5 mph/55.5 kph).

The Joint Typhoon Warning Center expects Bailu to move northwest and make landfall in Taiwan, then proceed to a second [landfall](#) in southeastern China.

Provided by NASA's Goddard Space Flight Center

Citation: NASA finds Tropical Depression Bailu forms east of Philippines (2019, August 22) retrieved 12 May 2024 from <https://phys.org/news/2019-08-nasa-tropical-depression-bailu-east.html>

This document is subject to copyright. Apart from any fair dealing for the purpose of private study or research, no part may be reproduced without the written permission. The content is provided for information purposes only.