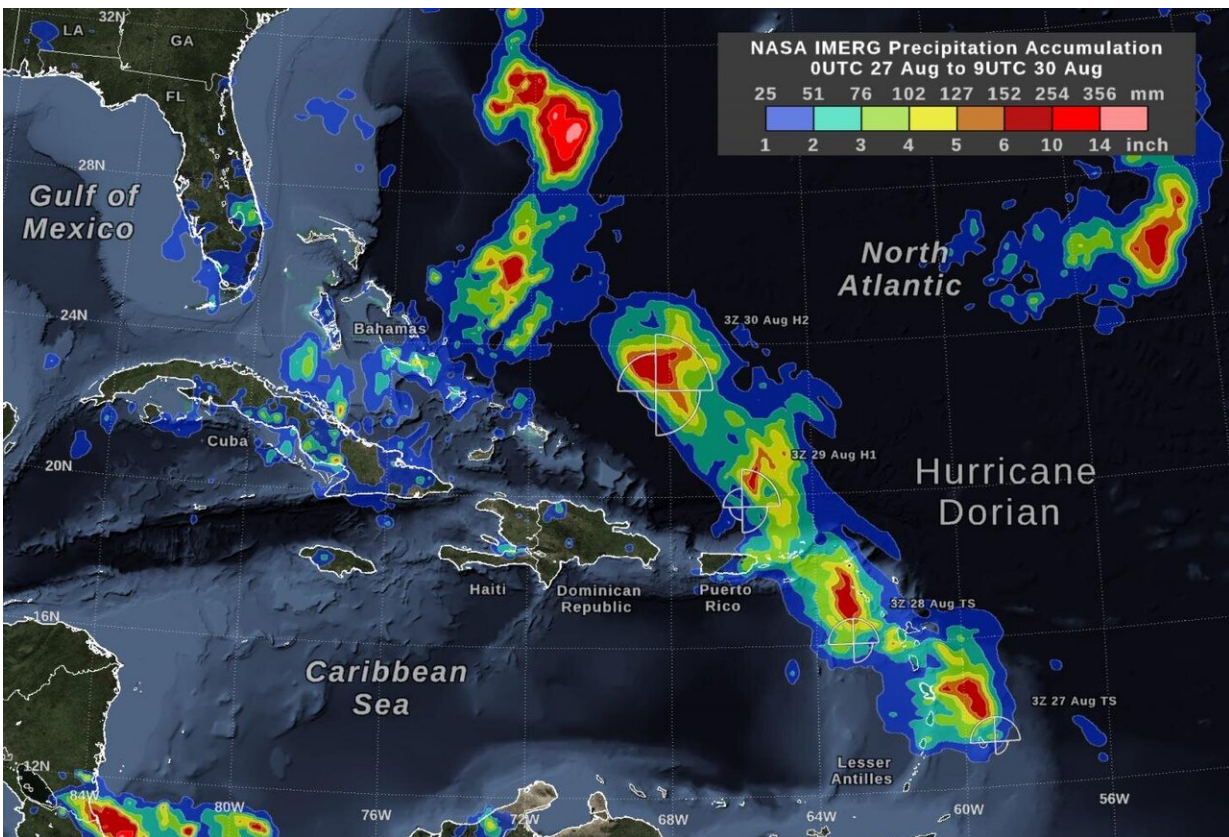


# NASA satellites on-hand as Dorian becomes a category 3 hurricane

August 30 2019



As of early on August 30, 2019 Hurricane Dorian has been producing 2 to 6 inches of rain along the path of its inner core for several days. This estimate come from the NASA IMERG algorithm, which combines observations from a fleet of satellites, in near-realtime, to provide global estimates of precipitation every 30 minutes. The storm-total rainfall at a particular location varies with the forward speed of the hurricane, with the size of the hurricane's wind field, and with how vigorous the updrafts are in the hurricane's eyewall. The graphic also shows the distance that tropical-storm force (39 mph) winds extend from the

Hurricane Dorian's low-pressure center, as reported by the National Hurricane Center. The symbols H2, H1, and TS represent category 2 hurricane, category 1 hurricane, and tropical storm, respectively. Credit: Visualization by NASA Goddard

As Hurricane Dorian was upgraded to a Category 3 hurricane on the Saffir-Simpson Hurricane Wind Scale, NASA's fleet of satellites were gathering data during the day to assist weather forecasters and scientists. At 2:00 pm EDT the National Hurricane Center (NHC) posted a supplemental advisory. NHC reports that "extremely dangerous Hurricane Dorian poses a significant threat to Florida and the northwestern Bahamas. The Hurricane Hunter plane finds Dorian is now a major hurricane."

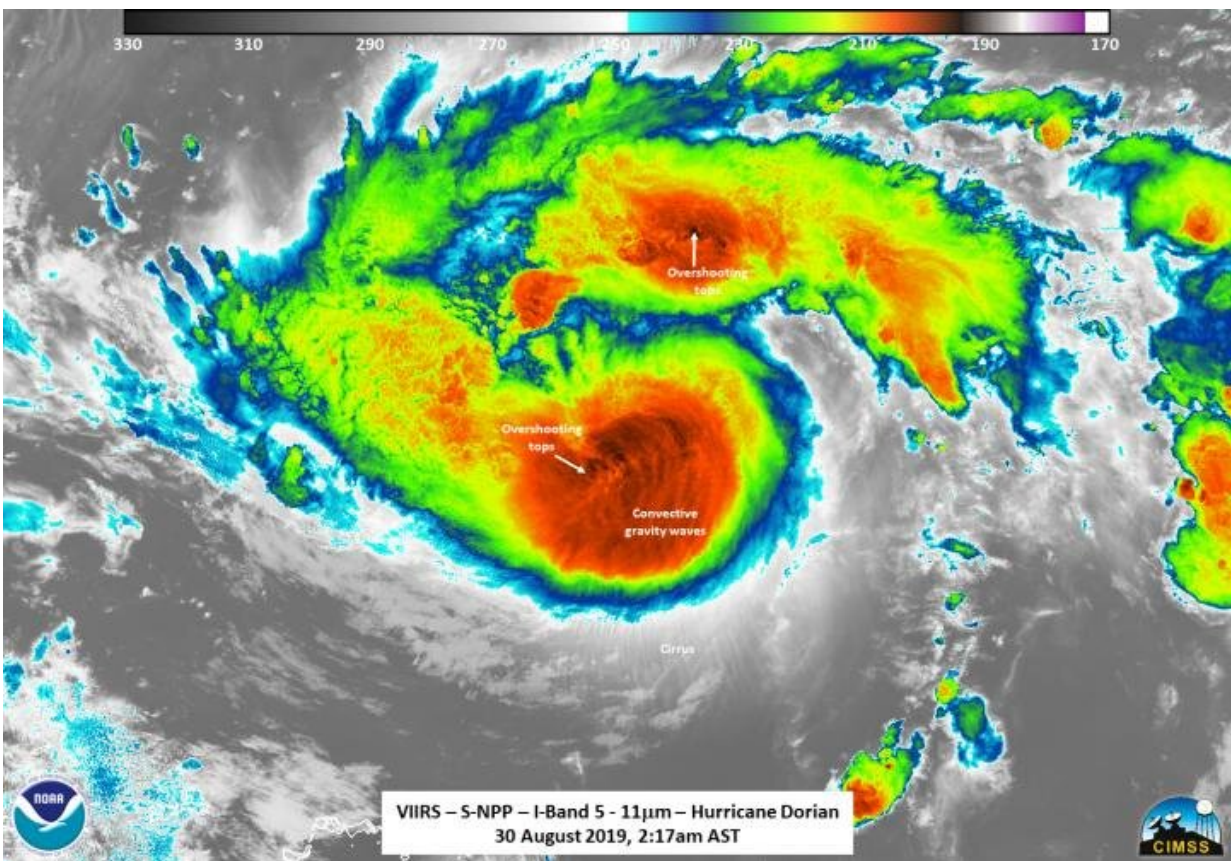
NASA's Global Precipitation Measurement mission [satellite](#) uses its IMERG algorithm with data from a fleet of satellites to provide global estimates of the precipitation within the [storm](#) every 30 minutes. This map is showing the estimates early on the morning of August 30 prior to Dorian becoming a Category 3 storm.

NOAA-NASA's Suomi NPP satellite uses its complement of instruments onboard to dissect storms and provide information on many different aspects of the [hurricane](#) including storm strength, cloudtop temperature, circulation, and rainfall, among others, within the structure of the storm. The next three images are all from the Suomi NPP satellite and its instruments which help scientists figure out the intensity of the storm and help predict where it will ultimately end up.

Hurricane Dorian is currently at latitude 24.8N and longitude 70.3W which is about 445 miles (715 km) east of the northwestern Bahamas and about 625 miles (1005 km) east of West Palm Beach, FL. The NHC

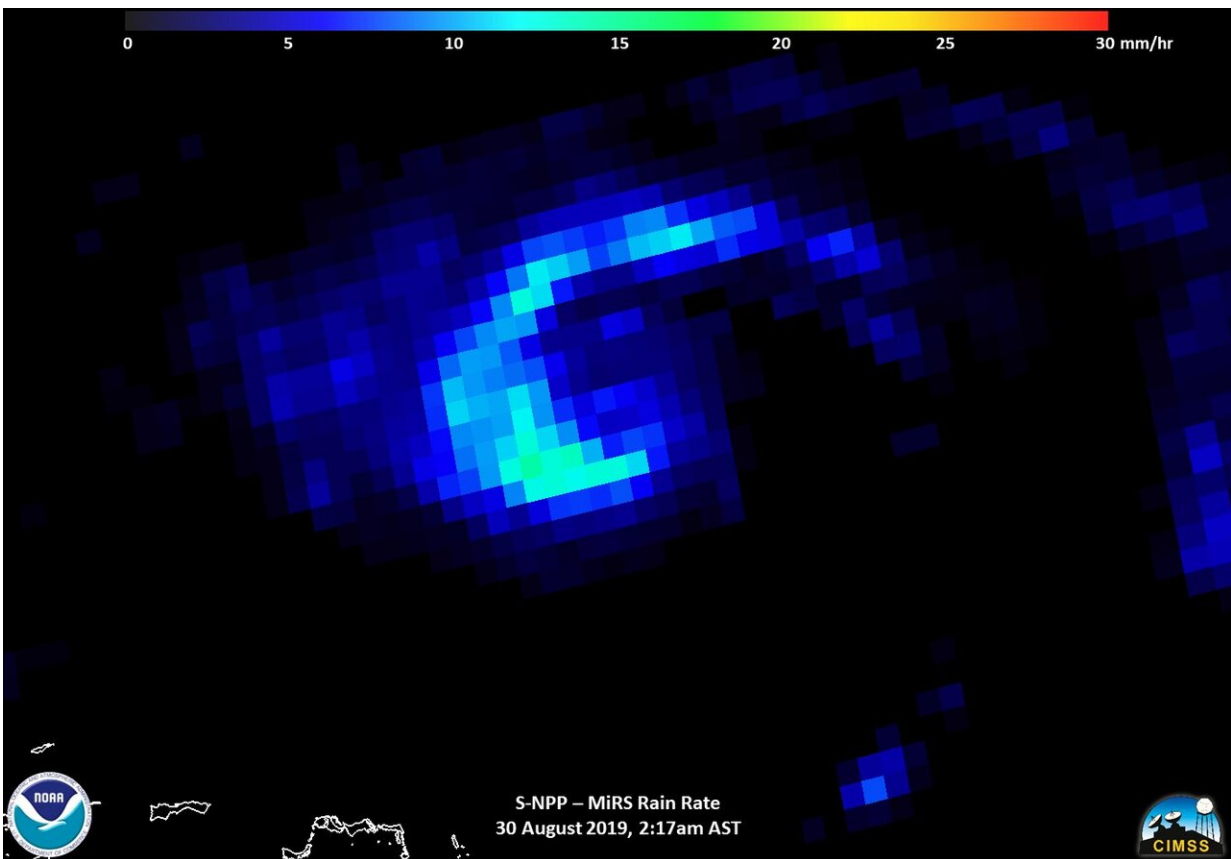
forecast is: "A slower west-northwestward to westward motion should begin tonight and continue into early next week. On this track, the core of Dorian should move over the Atlantic well north of the southeastern and central Bahamas today and tomorrow, be near or over the northwestern Bahamas on Sunday, and be near the Florida peninsula late Monday."

Currently the storm's maximum sustained winds are 115 mph (185 km/h) with higher gusts, and is moving northwest at 10 mph (17 km/h). Hurricane-force winds extend outward up to 25 miles (35 km) from the center and tropical-storm-force winds extend outward up to 105 miles (165 km). The minimum central pressure is 970 mb.



NASA/NOAA's Suomi NPP satellite was in an ideal position for observing

Dorian at 0617 UTC (2:17 am EDT) at an almost nadir view (right over the storm). The infrared imagery showed a somewhat circular storm, though a bit lopsided. However, the convection was strong enough to result in several overshooting tops and tropospheric gravity waves are atmospheric waves (in this observation from the troposphere) that are produced by strong thunderstorms near the eye and radiate outward in expanding spirals giving forecasters and scientists a good indicator of the strength of the storm. This top-down view of Dorian allowed the microwave sounder to observe the inner structure of the storm. Credit: NASA/NOAA/UWM-SSEC-CIMSS/William Straka III



Suomi NPP's MiRS instrument provided the rain rate and also showed the rain wrapping into the circulation center. Credit: NASA/NOAA/UWM-SSEC-CIMSS/William Straka III

Provided by NASA's Goddard Space Flight Center

Citation: NASA satellites on-hand as Dorian becomes a category 3 hurricane (2019, August 30)  
retrieved 18 April 2024 from

<https://phys.org/news/2019-08-nasa-satellites-on-hand-dorian-category.html>

This document is subject to copyright. Apart from any fair dealing for the purpose of private study or research, no part may be reproduced without the written permission. The content is provided for information purposes only.