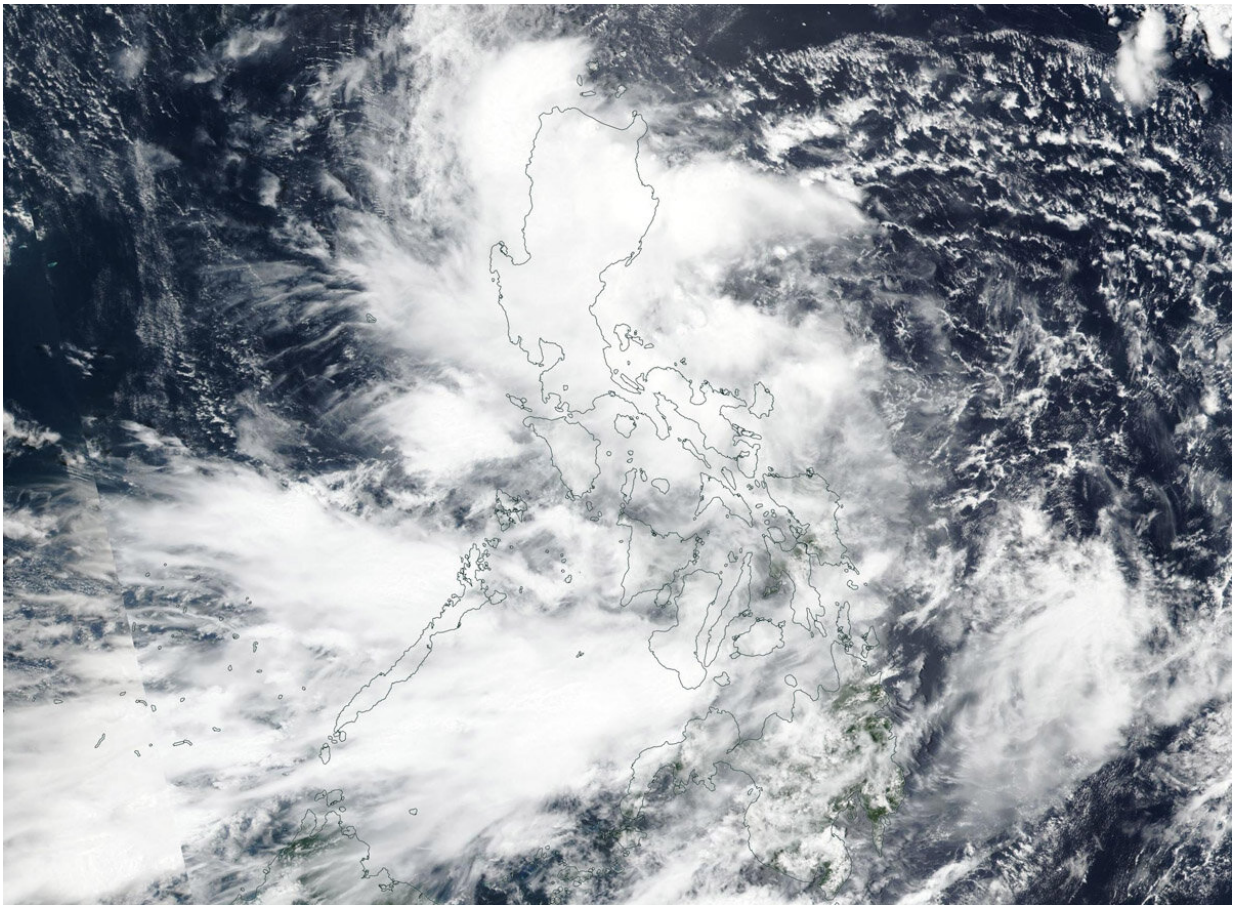


# NASA-NOAA satellite tracks tropical depression Podul across Philippines

August 27 2019

---



On August 27, 2019, NASA-NOAA's Suomi NPP satellite passed over the South China Sea and captured a visible image of Tropical Storm Podul. Credit: NASA Worldview, Earth Observing System Data and Information System (EOSDIS).

Tropical Depression 13W, now named Podul, was crossing the Philippines from east to west as NASA-NOAA's Suomi NPP satellite provided a visible image of the storm.

Podul's trek across the country triggered many Philippines warnings on August 27, 2019. Tropical cyclone wind signal #2 is in effect over the following Luzon provinces: Isabela, Aurora, Quirino, Nueva Vizcaya, Ifugao, Mountain Province, Benguet, Ilocos Sur, La Union and Pangasinan. Tropical cyclone wind signal #1 is in effect over the following Luzon provinces: Cagayan, Apayao, Abra, Kalinga, Ilocos Norte, Nueva Ecija, Tarlac, Zambales, Bataan, Pampanga, Bulacan, Metro Manila, Rizal, northern portion of Quezon including Polillo Island and Alabat Island, Cavite, Laguna, Camarines Norte, northeastern portion of Camarines Sur and Catanduanes.

The Visible Infrared Imaging Radiometer Suite (VIIRS) instrument aboard Suomi NPP provided a visible image of the storm on August 27, 2019. The VIIRS image showed the storm blanketed the country from north to south. The bulk of the clouds were located over the northern and central Philippines.

At 11 a.m. EDT (1500 UTC), Podul, known locally in the Philippines as "Jenny," was located near 16.0 degrees north latitude and 123.2 degrees east longitude. That puts the center of circulation about 153 nautical miles northeast of Manila, Philippines. It was moving to the west-northwest and had maximum sustained winds near 30 knots (34.5 mph/55.5 kph).

The Joint Typhoon Warning Center said that Podul will move west across the Philippines, before turning northwest towards Hainan Island, China. The system is expected to make final landfall in Vietnam after five days.

Provided by NASA's Goddard Space Flight Center

Citation: NASA-NOAA satellite tracks tropical depression Podul across Philippines (2019, August 27) retrieved 2 May 2024 from <https://phys.org/news/2019-08-nasa-noaa-satellite-tracks-tropical-depression.html>

This document is subject to copyright. Apart from any fair dealing for the purpose of private study or research, no part may be reproduced without the written permission. The content is provided for information purposes only.