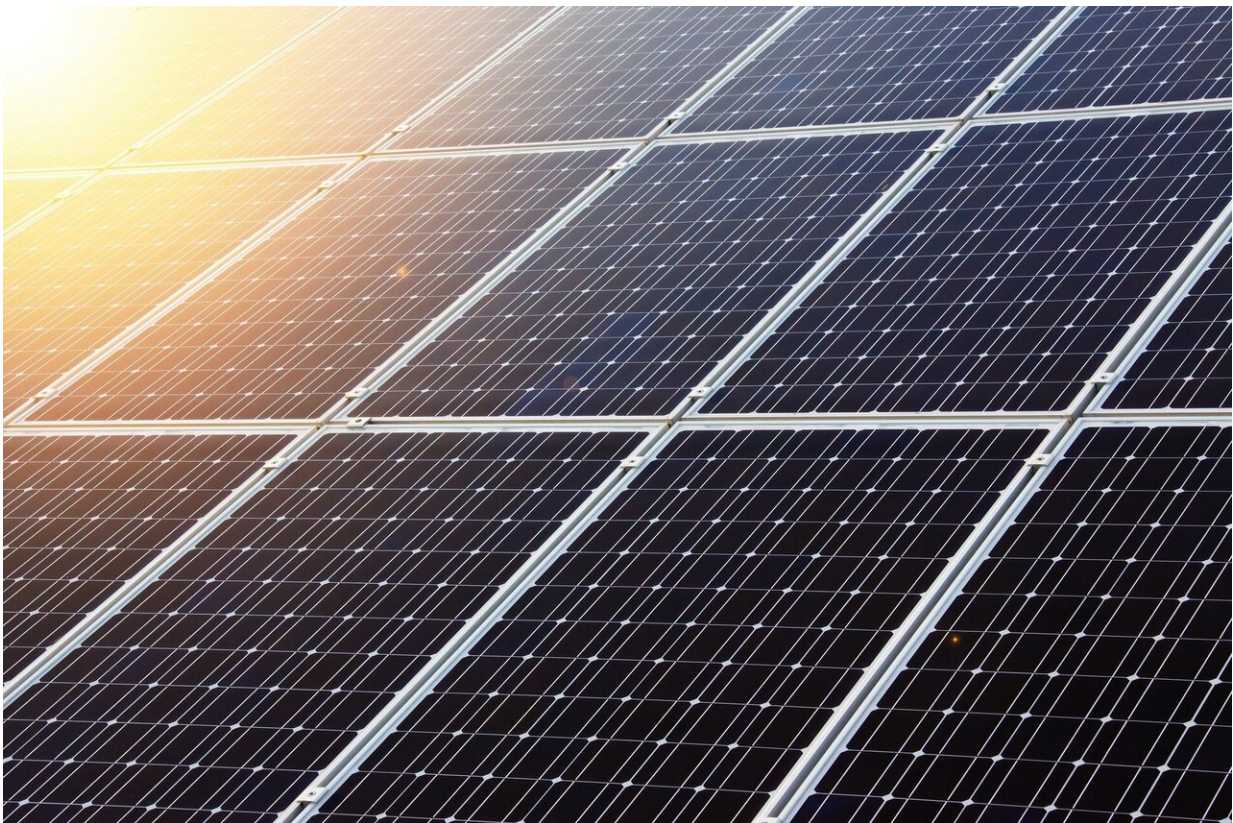


Mapping the energetic landscape of solar cells

August 13 2019



Credit: CC0 Public Domain

A new spectroscopic method now makes it possible to measure and visualize the energetic landscape inside solar cells based on organic materials. It was developed by a research team led by Prof. Dr. Yana

Vaynzof, a physicist at Heidelberg University. This novel visualization technique enables scientists to study the physical principles of organic photovoltaics with extreme precision and to better understand processes such as energetic losses.

"Mapping our Earth's landscapes was a necessary step for understanding the [movement patterns](#) and dynamics of people, animals and water, among other examples," explains Prof. Vaynzof, research group leader at the Kirchhoff Institute for Physics at Heidelberg University. "Similarly, the movement of electric charges in a solar cell is determined by the energetic landscape within the device." Until now, visualizing these energetic landscapes was so challenging that only rough estimates could be used to study the fundamental processes in organic photovoltaic devices.

The spectroscopic method developed by the Heidelberg researchers can map the energetic [landscape](#) on a nanometer scale and can be applied at any point during the solar cell's lifetime. "The strength of our method lies in its excellent resolution and great versatility," says Vincent Lami, member of Prof. Vaynzof's team and the lead author of the study. According to Prof. Vaynzof, their work solves a key problem in the field of organic photovoltaics. "Without mapping the energetic landscapes, it is difficult to understand how and why devices lose energy in the process of converting light into electricity. Now, we have a spectroscopic method that allows us to develop new generations of [solar cells](#) with reduced energy losses and improved performance," says the scientist.

More information: Vincent Lami et al. Visualizing the Vertical Energetic Landscape in Organic Photovoltaics, *Joule* (2019). [DOI: 10.1016/j.joule.2019.06.018](https://doi.org/10.1016/j.joule.2019.06.018)

Provided by Heidelberg University

Citation: Mapping the energetic landscape of solar cells (2019, August 13) retrieved 18 May 2024 from <https://phys.org/news/2019-08-energetic-landscape-solar-cells.html>

This document is subject to copyright. Apart from any fair dealing for the purpose of private study or research, no part may be reproduced without the written permission. The content is provided for information purposes only.