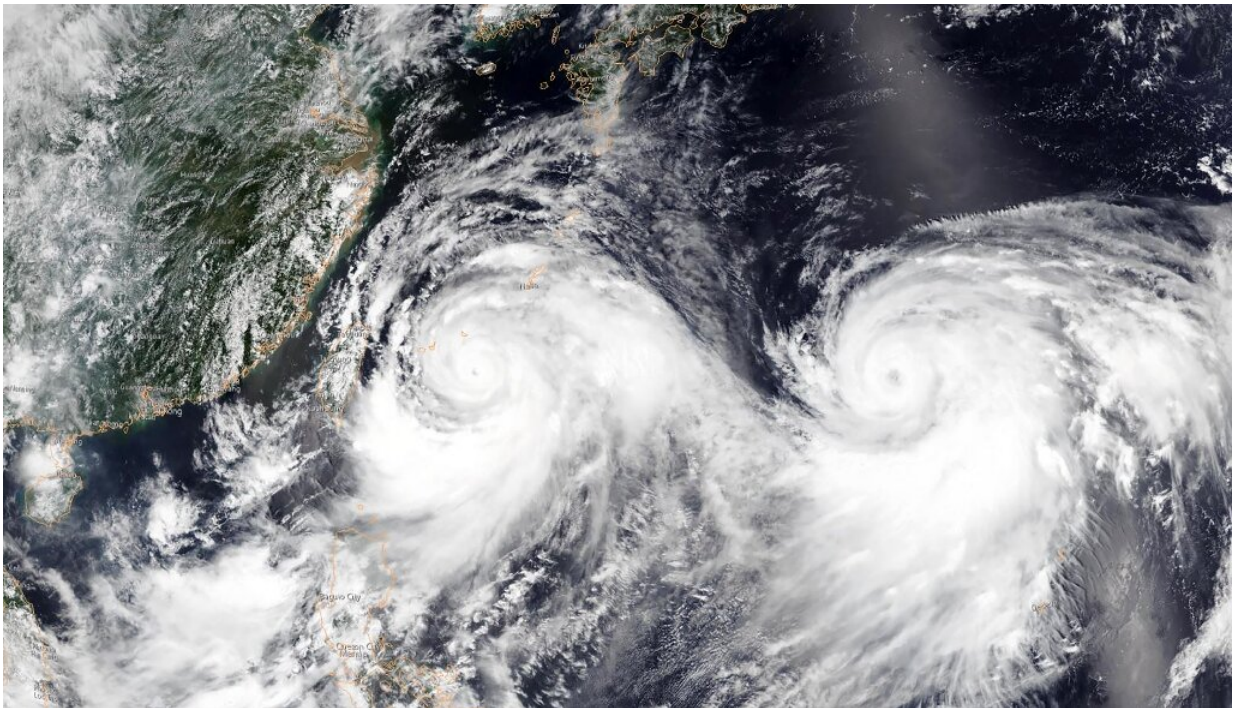


At least 13 dead, 16 missing as Typhoon Lekima slams east China

August 10 2019



This satellite image shows Typhoon Lekima approaching southeastern China

At least 13 people were killed and 16 others missing as Typhoon Lekima lashed eastern China Saturday, downing thousands of trees and forcing more than a million people from their homes.

Waves several metres high hit the coastline as the storm made landfall in

Zhejiang province, south of Shanghai.

Thirteen people were killed and 16 missing in a landslide triggered by [torrential rains](#) brought by the storm, national television reported.

The tragedy occurred in the municipality of Wenzhou, around 400 kilometres (250 miles) south of Shanghai, CCTV said.

"Torrential rains caused a landslide on a mountain that blocked a river below," it said.

The resulting "dam" created a lake which swept downstream when it burst.

More than a million people were evacuated from their homes ahead of the storm, the official Xinhua news agency reported. Some 110,000 people were housed in shelters.

The monster storm made landfall in the early hours in Wenling City, packing winds of 187 kilometres per hour (116 miles per hour), and was expected to churn up the east coast towards Shanghai, Xinhua added.

Footage broadcast on CCTV showed a torrent of muddy water surging through the streets and emergency workers rescuing a man trapped under rubble and fallen trees.



Waves hit a sea wall in Taizhou in China's eastern Zhejiang province, battered by Super Typhoon Lekima

One street in Yueqing city, part of Wenzhou, was shown completely flooded.

China issued a red alert as the [storm](#) approached on Friday, before downgrading the level to orange as winds eased on Saturday morning.

Lekima has been downgraded from a [super typhoon](#) to a typhoon as it headed northwards inland.

More heavy rain was forecast for the Shanghai area and the

neighbouring provinces of Anhui, Jiangsu and Zhejiang, with authorities warning of possible flash floods, mudslides and landslides caused by the downpours.

In Zhejiang province alone, nearly 300 flights were cancelled, and ferry and rail services were suspended as a precaution.

Around 300,000 people were relocated in Shanghai, where the high-speed maglev train that links the city to one of its airports was suspended.



More than a million people were evacuated from their homes in east China ahead of the storm

Shanghai Disneyland was also closed for the first time since the amusement park opened in 2016.

Lekima had earlier swept past the northern tip of Taiwan on Friday, where nine people were injured, thousands of homes lost power temporarily and more than 500 flights were cancelled.

Last September, Typhoon Mangkhut slammed into mainland China where authorities evacuated more than two million people, after it left a trail of destruction in Hong Kong and Macau and killed at least 59 people in the northern Philippines.

© 2019 AFP

Citation: At least 13 dead, 16 missing as Typhoon Lekima slams east China (2019, August 10) retrieved 27 April 2024 from <https://phys.org/news/2019-08-dead-typhoon-lekima-slams-east.html>

This document is subject to copyright. Apart from any fair dealing for the purpose of private study or research, no part may be reproduced without the written permission. The content is provided for information purposes only.