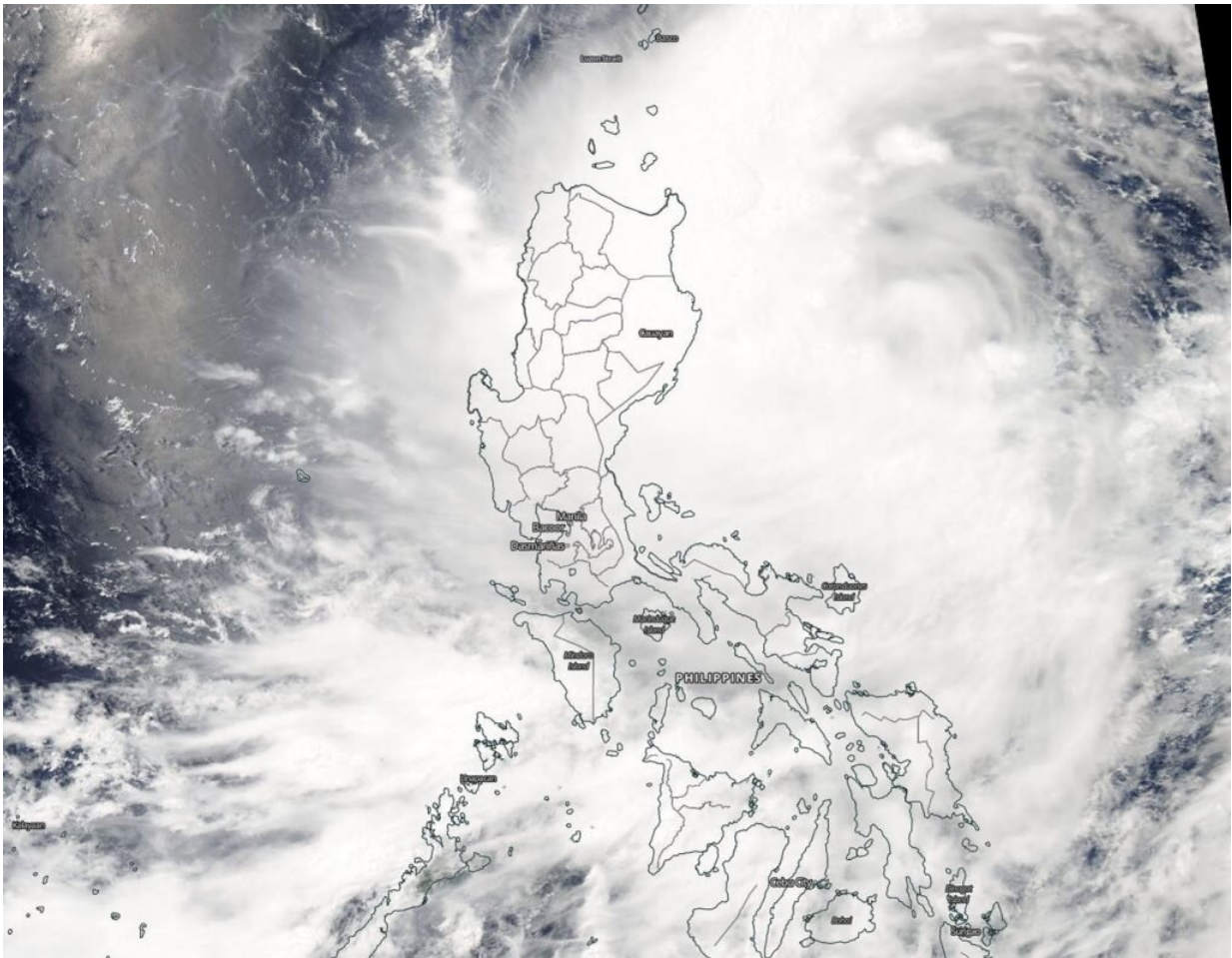


Tropical Depression Danas affecting Philippines in NASA satellite imagery

July 16 2019, by Rob Gutro



On July 16, 2019, the MODIS instrument aboard NASA's Aqua satellite provided a visible image of Tropical Depression Danas in the Northwestern Pacific Ocean. Credit: NASA Worldview, Earth Observing System Data and Information System (EOSDIS)

NASA's Aqua satellite passed over the Northwestern Pacific Ocean after the sixth tropical depression formed. Tropical Depression Danas formed northeast of the Northern Philippines and was already affecting the country.

On July 16, the Moderate Resolution Imaging Spectroradiometer or MODIS instrument aboard NASA's Aqua satellite provided a visible image of Danas that showed a large [depression](#) that stretched the entire length of the Philippines. Strongest thunderstorms remained off the [coast](#) in the image, but the northwestern and western quadrants were already over the Luzon and Visayas regions.

At 5 a.m. EDT (0900 UTC), the center of Danas was located near latitude 17.2 degrees north and longitude 124.9 degrees west. Danas was about 587 nautical miles southwest of Kadena Air Base, Okinawa, Japan. Danas was moving to the west-northwest and had maximum sustained winds near 25 knots (29 mph/46 kph).

The Joint Typhoon Warning Center expects Danas to turn to the north. Danas' center is expected to stay over water until it makes landfall in three days south of Shanghai, China.

Provided by NASA's Goddard Space Flight Center

Citation: Tropical Depression Danas affecting Philippines in NASA satellite imagery (2019, July 16) retrieved 27 April 2024 from <https://phys.org/news/2019-07-tropical-depression-danas-affecting-philippines.html>

This document is subject to copyright. Apart from any fair dealing for the purpose of private study or research, no part may be reproduced without the written permission. The content is provided for information purposes only.