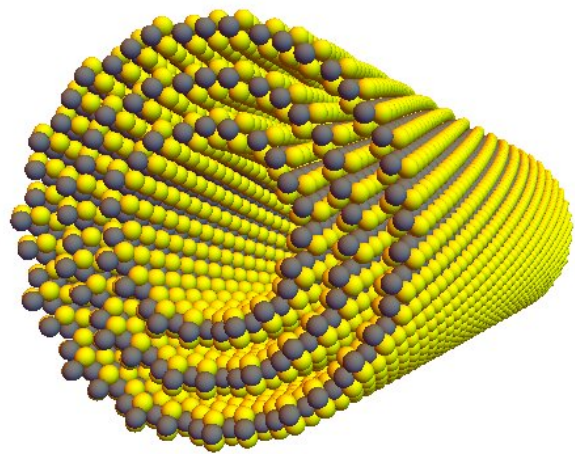
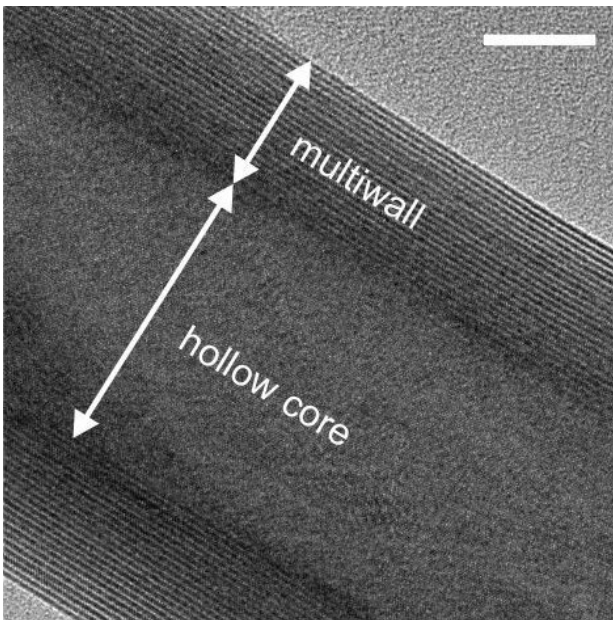


Special nanotubes could improve solar power and imaging technology

June 19 2019



Transmission electron microscopy image of a hollow core nanotube. The white scale bar corresponds to 10 nanometers (left). Rendering of a nanotube (right)
Credit: © 2019 Iwasa et al.

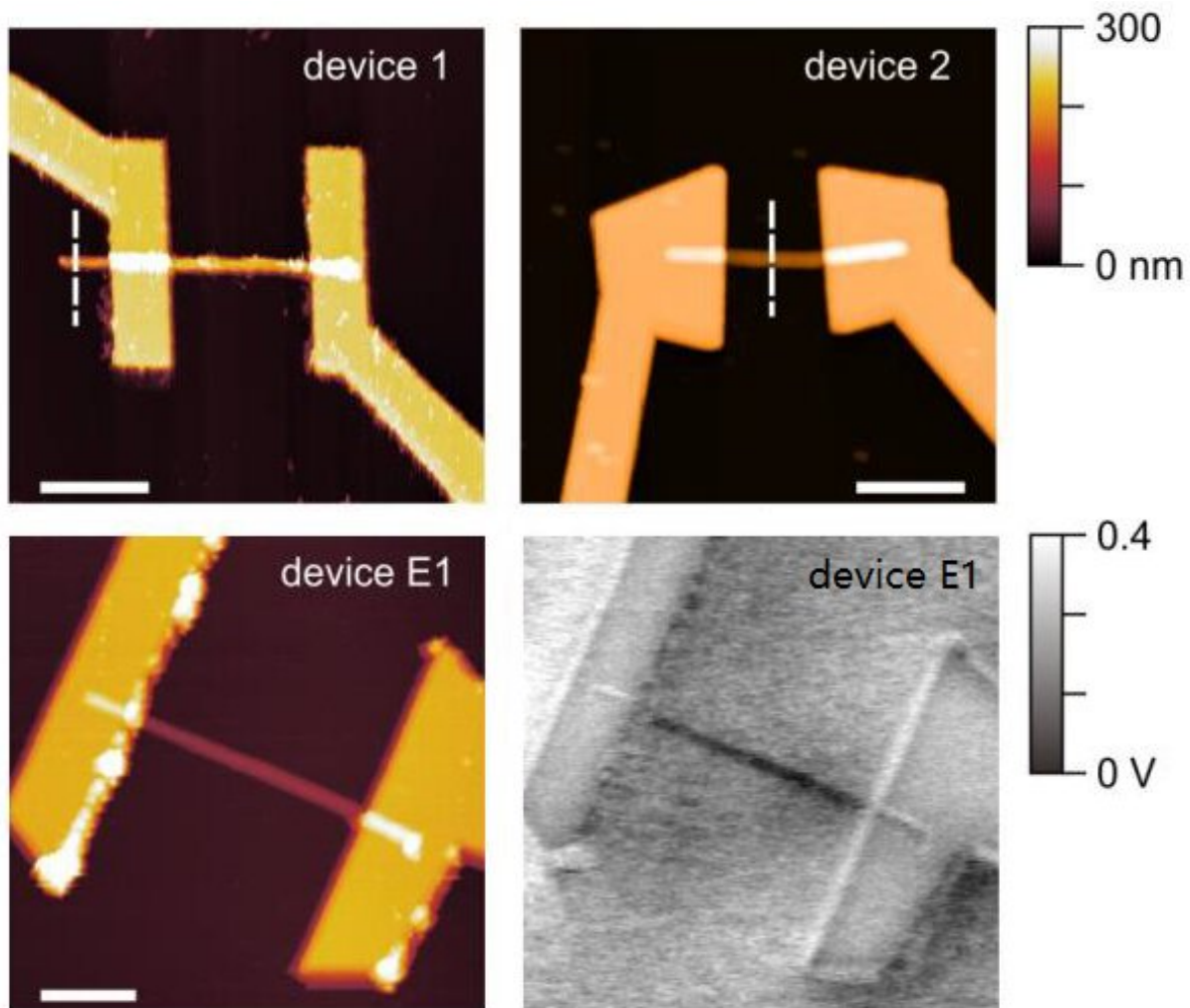
Physicists have discovered a novel kind of nanotube that generates current in the presence of light. Devices such as optical sensors and infrared imaging chips are likely applications, which could be useful in fields such as automated transport and astronomy. In future, if the effect can be magnified and the technology scaled up, it could lead to high-

efficiency solar power devices.

Working with an international team of physicists, University of Tokyo Professor Yoshihiro Iwasa was exploring possible functions of a special semiconductor nanotube when he had a lightbulb moment. He took this proverbial lightbulb (which was in reality a laser) and shone it on the nanotube to discover something enlightening. Certain wavelengths and intensities of light induced a current in the sample—this is called the [photovoltaic effect](#). There are several [photovoltaic](#) materials, but the nature and behavior of this nanotube is cause for excitement.

"Essentially our research material generates electricity like [solar panels](#), but in a different way," said Iwasa. "Together with Dr. Yijin Zhang from the Max Planck Institute for Solid State Research in Germany, we demonstrated for the first time nanomaterials could overcome an obstacle that will soon limit current solar technology. For now solar panels are as good as they can be, but our technology could improve upon that."

The current-inducing nanotube is made from rolled-up sheets of a special semiconductor material based on [tungsten disulfide](#) (WS_2). The sheets do not induce a current in the presence of light unless rolled into tubes. This is an emergent behavior, one not intrinsic to the material until it's modified. What is interesting is how it differs from existing [photovoltaic materials](#).



Various iterations of the experimental nanotube device. Images captured by an atomic force microscope, and a scanning Kelvin probe microscope (lower right). Credit: © 2019 Iwasa et al.

Generally, photovoltaic solar panels make use of a certain arrangement of materials called a [p-n junction](#). This is where two different kinds of materials (p-type and n-type) are attached, which alone do not generate a current in the presence of light, but when placed together, do. P-n junction-based photovoltaics have improved in efficiency over the 80

years or so since their discovery. However, they are getting close to their theoretical limits due in part to their need for the arrangement of multiple materials.

WS₂ nanotubes do not rely on a junction between materials to gain the photovoltaic effect. When exposed to light, they generate a current throughout their entire structure or bulk. This is called the bulk photovoltaic effect (BPVE) and it occurs as the WS₂ nanotube is not symmetrical if you were to reverse it. If it were symmetrical, the current induced would not have a preferred direction and thus would not flow. So other symmetrical nanotubes—such as the famous carbon [nanotubes](#)—don't exhibit BPVE despite being great electrical conductors.

"Our research shows an entire order of magnitude improvement in efficiency of BPVE compared to its presence in other materials," continued Iwasa. "But despite this huge gain, our WS₂ nanotube cannot yet compare to the generating potential of p-n junction materials. This is because the device is nanoscopic and will be difficult to make larger. But it is possible and I hope chemists are inspired to take on that challenge."

In the long term, researchers hope this kind of material could allow fabrication of more efficient solar panels. But given the foreseeable size constraints in the near term, it's more likely to find use in other applications. BPVE could be used to create more sensitive and higher-fidelity optical or infrared sensors. These have further applications in embedded monitoring devices, sensor-laden self-driving cars or even in the imaging sensors for astronomical telescopes.

"My colleagues from around the world and I eagerly explore the potential of this unprecedented technology," concluded Iwasa. "For me, the idea of creating new [materials](#) beyond anything nature could provide is a fascinating reward in its own right."

The study is published in *Nature*.

More information: Enhanced intrinsic photovoltaic effect in tungsten disulfide nanotubes, *Nature* (2019). DOI: [10.1038/s41586-019-1303-3](https://doi.org/10.1038/s41586-019-1303-3) , www.nature.com/articles/s41586-019-1303-3

Provided by University of Tokyo

Citation: Special nanotubes could improve solar power and imaging technology (2019, June 19)
retrieved 10 April 2024 from
<https://phys.org/news/2019-06-special-nanotubes-solar-power-imaging.html>

<p>This document is subject to copyright. Apart from any fair dealing for the purpose of private study or research, no part may be reproduced without the written permission. The content is provided for information purposes only.</p>
--