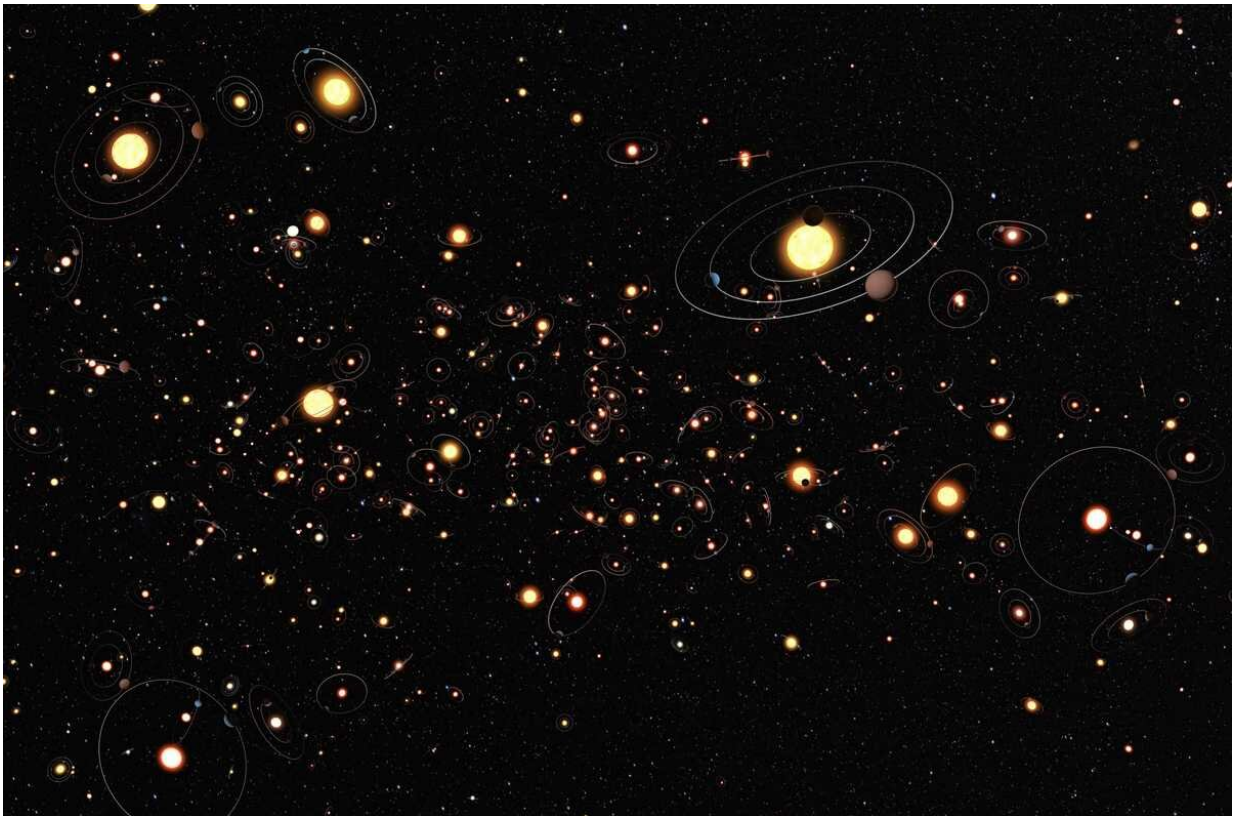


Scientist develops novel algorithm to aid search for exoplanets

June 25 2019, by Deb Schmid



This artist's impression (not to scale) illustrates how common star-exoplanet systems may be in the Milky Way. An SwRI scientist has developed an algorithm to predict the likelihood that a star hosts giant planets, based on the composition of known star-exoplanet systems. Credit: ESO/M. Kornmesser

Inspired by movie streaming services such as Netflix or Hulu, a

Southwest Research Institute scientist developed a technique to look for stars likely to host giant, Jupiter-sized planets outside of our solar system. She developed an algorithm to identify stars likely to host giant exoplanets, based on the composition of stars known to have planets.

"My viewing habits have trained Netflix to recommend sci-fi movies I might like—based on what I've already watched. These watched movies are like the known star-exoplanet systems," said Dr. Natalie Hinkel, a planetary astrophysicist at SwRI. "Then, the algorithm looks for stars with yet-undetected planets—which are comparable to movies I haven't watched—and predicts the likelihood that those stars have planets."

Just as a cake recipe includes some basic ingredients, stars need certain elements to make [giant planets](#). Scientists can use spectroscopy, or the way that light interacts with atoms in the star's upper layers, to measure a star's composition, which includes materials such as carbon, magnesium and silicon. These elements are the ingredients for making a planet, because stars and planets are made at the same time and from the same materials. However, while there are a lot of ingredients in your kitchen, not all of them belong in a cake. This is where the movie-streaming algorithm comes in, predicting planets based on the elements in stars.

"We found that the most influential elements in predicting planet-hosting stars are carbon, oxygen, iron and sodium," Hinkel said. "The funny thing was that we were not expecting sodium to be a key ingredient for predicting a planet. But it must be an important link between stars and planets, because it kept popping up, even when looking at different combinations of elements."

Hinkel used the [Hypatia Catalog](#), a publicly available stellar database she developed, to train and test the algorithm. It's the largest database of stars and their elements for the population within 500 light years of our Sun. At last count, Hypatia had stellar element data for 6,193 stars, 401

of which are known to host planets. The database also catalogs 73 stellar elements from hydrogen to lead.

The algorithm, which will be publicly available, has looked at more than 4,200 stars and assessed their likelihood of hosting planets, based solely on the elements, or ingredients, within the star. In addition, Hinkel looked at different combinations of those ingredients to see how they influenced the algorithm.

Hinkel's team identified around 360 potential giant planet host stars that have more than a 90 percent probability of hosting a giant exoplanet. "We were excited, so we used archival telescope data to search for any signs of planets around these likely host stars," Hinkel said. "We identified possible Jupiter-sized planets around three stars predicted by the algorithm."

When asked about how reliable her algorithm is, she explained that "we don't have any true-negatives in our data—that is, stars that we know don't have [planets](#)—so we 'hid' some known planet-hosting stars in the data to see what their prediction score would be like. On average they scored more than 75 percent, which is great! That's probably a higher average than me liking the sci-fi movies Netflix picks for me."

Moving forward, these findings could revolutionize target star selections for future research and clinch the role elements play in giant planet detection and formation. Hinkel is the lead author of the paper "A recommendation [algorithm](#) to predict giant exoplanet host [stars](#) using stellar elemental abundances," which will be published in an upcoming issue of *The Astrophysical Journal*.

More information: Natalie R. Hinkel, et al. A Recommendation Algorithm to Predict Giant Exoplanet Host Stars Using Stellar Elemental Abundances. arXiv:1805.12144v2 [astro-ph.EP]:

arxiv.org/abs/1805.12144

Provided by Southwest Research Institute

Citation: Scientist develops novel algorithm to aid search for exoplanets (2019, June 25)
retrieved 27 April 2024 from

<https://phys.org/news/2019-06-scientist-algorithm-aid-exoplanets.html>

This document is subject to copyright. Apart from any fair dealing for the purpose of private study or research, no part may be reproduced without the written permission. The content is provided for information purposes only.